

# 2019

ARCTICWEAR  
& SNOWMOBILE  
ACCESSORIES





# GEAR UP & HEAD OUT

No matter how or where you ride, we have the gear and accessories you need to perfect every aspect of your ride. From your look to your sled, everything about the Arctic Cat experience is customizable, so you can get the most out of life at the throttle.

The Wide World of Arctic Cat is waiting. Are you ready?

## ARCTICWEAR®

- 06 RACE EDITION
- 14 HIGH PERFORMANCE
- 26 CROSSOVER/MOUNTAIN
- 32 FLEX LINERS
- 34 PANTS & BIBS
- 38 BASE LAYERS
- 40 MID-LAYERS
- 42 CASUAL OUTERWEAR
- 44 YOUTH

## RIDEGEAR

- 50 HELMETS
- 54 GOGGLES
- 56 HEADGEAR
- 57 GLOVES
- 60 BOOTS
- 62 BAGS
- 64 PROTECTION

## SPORTSWEAR

- 66 TUCKER HIBBERT COLLECTION
- 68 MEN
- 73 JERSEYS
- 74 WOMEN
- 78 YOUTH
- 80 TODDLER
- 81 INFANT
- 82 CAPS
- 85 KNIT HATS
- 88 COLLECTIBLES

## ACCESSORIES

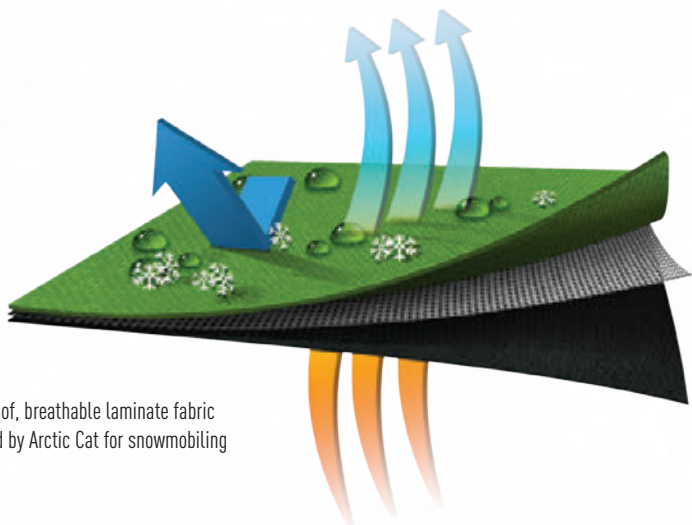
- 94 COVERS
- 98 BAGS
- 102 TOURING
- 110 WINDSCREENS
- 112 CUSTOM
- 118 ZR 200
- 122 PERFORMANCE
- 124 MOUNTAIN
- 132 UTILITY
- 134 TRACKS
- 136 TRACTION & CONTROL
- 140 GENERAL MAINTENANCE
- 141 BATTERY CHARGERS
- 142 BELTS
- 143 OIL & CARE





ARCTIC CAT EXCLUSIVE

REGULATES YOUR INTERNAL CLIMATE BY KEEPING WATER OUT AND ALLOWING BODY MOISTURE TO ESCAPE



Three-layer waterproof, breathable laminate fabric specifically formulated by Arctic Cat for snowmobiling

ARCTIC CAT EXCLUSIVE



Arctic Cat's own waterproof, breathable coated fabric that blocks weather while transferring moisture away from your body

**3M Scotchlite™**  
Reflective Material

3M™ Scotchlite™ reflective trims are built into the garment for 360° reflectivity and safety

ARCTIC CAT EXCLUSIVE

BODY MAPPED **FABRICS AND INSULATIONS** FOR TECHNOLOGY WHERE YOU NEED IT MOST



**CORE ZONE**

Windproof shell fabrics  
Higher insulation for core warmth



**OUTER ZONE**

Abrasion resistant fabrics for durability  
Stretch panels for superior mobility

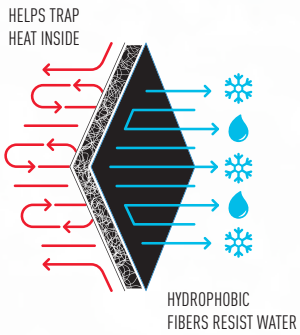


**SWEAT ZONE**

Breathable fabrics for moisture escape  
Lower insulation for easy movement

**3M Thinsulate™ Platinum**  
INSULATION

High-performance 3M™ Thinsulate™ Platinum synthetic insulation helps you stay warm and dry by trapping and holding body heat while allowing moisture to escape



**BOA®** | FIT TO GO FURTHER.™





# DESIGNED FOR FIRST PLACE.

Competitiveness runs through every strand of our Race Edition Arcticwear. Inspired by the pros and designed to impress, this line of apparel is as legit as you'll find.



**3M** Scotchlite™  
Reflective Material

**3M** Thinsulate Platinum  
INSULATION





TEAM ARCTIC® JACKET

TALL SIZES AVAILABLE

- » Flex Liner compatible (See pages 32-33)
- » 100-gram 3M™ Thinsulate™ Platinum Insulation for warmth without bulk
- » SNO-TEX® waterproof, breathable coated shell fabric keeps you dry
- » 360° reflectivity to increase visibility in low light conditions
- » Arcticwear signature neoprene comfort cuffs
- » Interior chest pocket, YKK zippers

MEN'S REGULAR & TALL SIZES

5281-00\* LIME/GRAY | -010 4XL | -011 5XL  
5281-16\* BLACK | -170 4XL | -171 5XL  
5290-00\* ORANGE  
S-3XL, MT-2XLT  
4XL-5XL (EXCEPT ORANGE)

WOMEN'S REGULAR & TALL SIZES

5290-01\* LIME/GRAY | 5290-02\* BLACK | 5281-14\* PURPLE  
S-2XL, MT-XLT



TEAM ARCTIC PANTS

TALL SIZES AVAILABLE

- » Team Arctic race design matches Team Arctic jackets
- » 200-gram 3M™ Thinsulate™ Platinum Insulation provides warmth without bulk
- » SNO-TEX waterproof, breathable coated shell fabric with fully taped seams keeps you dry
- » Zip-off back bib for easy conversion to pants
- » YKK full-length side zippers allow easy access even with your boots on

MEN'S REGULAR & TALL SIZES

5281-12\* LIME/GRAY | -130 4XL | -131 5XL  
5290-04\* BLACK | -050 4XL | -051 5XL  
S-5XL, MT-2XLT

WOMEN'S REGULAR & TALL SIZES

5281-15\* PURPLE  
S-2XL, MT-XLT





RACE EDITION



**SNO-CROSS® JACKET**  
**TALL SIZES AVAILABLE**

- » Authentic Team Arctic Racing Logos
  - » 10,000mm waterproof, 8,000g/m² breathable non-insulated outer shell with mesh lining
  - » SNO-TEX fully taped seams
- NOTE:** Does not accept Flex Liners.

**MEN'S REGULAR & TALL SIZES**  
**5290-07\***  
S-3XL, MT-2XLT



**SNO-CROSS™ PANTS**  
**TALL SIZES AVAILABLE**

- » Zip-off suspenders for easy conversion to pants
- » Full-length side zippers for access
- » 10,000mm waterproof, 8,000g/m² breathable non-insulated outer shell with mesh lining
- » SNO-TEX fully taped seams

**MEN'S REGULAR & TALL SIZES**  
**5281-24\*** GREEN/ORANGE  
S-3XL, MT-2XLT  
**5281-18\*** BLACK | -190 4XL | -191 5XL  
S-5XL, MT-2XLT



**TEAM ARCTIC HIBBERT JACKET**  
**TALL SIZES AVAILABLE**

- » Flex Liner compatible (See pages 32-33)
- » Tucker Hibbert and Team Arctic race graphics
- » 100-gram 3M™ Thinsulate™ Platinum Insulation for warmth without bulk
- » SNO-TEX waterproof, breathable coated shell fabric keeps you dry
- » 360° reflectivity to increase visibility in low light conditions
- » Interior chest pocket, YKK zippers

**MEN'S REGULAR & TALL SIZES**  
**5280-19\*** LIME | -200 4XL | -201 5XL  
S-5XL, MT-2XLT

**WOMEN'S REGULAR & TALL SIZES**  
**5280-22\*** PINK  
S-2XL, MT-XLT





RACE EDITION



TEAM ARCTIC SPONSOR JACKET

- » Flex Liner compatible (See pages 32-33)
- » Authentic Team Arctic Racing sponsor graphics
- » 100-gram 3M™ Thinsulate™ Platinum Insulation for warmth without bulk
- » SNO-TEX waterproof, breathable coated shell fabric keeps you dry
- » 360° reflectivity to increase visibility in low light conditions
- » Interior chest pocket, YKK zippers

MEN'S REGULAR SIZES  
5280-33\* LIME/GRAY  
S-3XL



RACE TEAM JACKET

- » Flex Liner compatible (See pages 32-33)
- » Authentic Team Arctic Racing sponsor graphics
- » 100-gram 3M™ Thinsulate™ Platinum Insulation for warmth without bulk
- » SNO-TEX waterproof, breathable coated shell fabric keeps you dry
- » 360° reflectivity to increase visibility in low light conditions
- » Interior chest pocket, YKK zippers

MEN'S REGULAR SIZES  
5290-06\* BLACK  
S-3XL







# GO FARTHER WITH APPAREL THAT PERFORMS.

Be honest. You never really want your ride to end. That's why we offer High Performance Arcticwear. So you can stay out longer and see more of what this life has to offer. Just zip up, head out and enjoy the world ahead.



**3M** Scotchlite™  
Reflective Material

**3M** Thinsulate Platinum  
INSULATION



# HIGH PERFORMANCE

## GUARDIAN JACKET

- » Flex Liner compatible (See pages 32-33)
- » SNO-ZONE fabrics and insulation construction combine for comfortable, functional riding
- » Zoned insulation includes 3M™ Thinsulate™ Platinum 100-gram in chest area for core warmth, 80-gram in sleeves for more flexibility
- » SNO-TEX waterproof, breathable coated shell fabric with fully taped seams
- » Lycra® inner cuff
- » 360° reflectivity
- » YKK zippers
- » Interior storage pocket compatible with headphone cords
- » Magnet front flap closure

### MEN'S REGULAR SIZES

5290-13\* GREEN | 5290-14\* BLACK | 5290-15\* ORANGE  
S-3XL



## INTERCHANGER 3-1 JACKET

- » 3 jackets in 1 system
- » 100-gram 3M™ Thinsulate™ Platinum Insulation in outer shell
- » Wearable removable fleece/nylon liner
- » Outer shell and liner can be worn separately or together, making this versatile jacket comfortable in most riding conditions
- » SNO-TEX waterproof, breathable coated shell fabric with fully taped seams
- » Lycra® inner cuff
- » 360° reflectivity
- » YKK zippers
- » Interior storage pocket compatible with headphone cords

### MEN'S REGULAR SIZES

5290-08\* GREEN | 5290-09\* BLACK | 5290-10\* ORANGE  
S-3XL



RACE EDITION  
HIGH PERFORMANCE  
CROSSOVER/MOUNTAIN  
FLEX LINERS  
PANTS & BIBS  
BASE LAYERS  
MID-LAYERS  
CASUAL OUTERWEAR  
YOUTH



# HIGH PERFORMANCE

## PRECISION JACKET

- » Flex Liner compatible (See pages 32-33)
- » Exclusive Arctic Cat sublimated pattern and graphics
- » 100-gram 3M™ Thinsulate™ Platinum Insulation for warmth without bulk
- » SNO-TEX waterproof, breathable coated shell fabric keeps you dry
- » 360° reflectivity to increase visibility in low light conditions
- » Interior chest pocket, YKK zippers

### MEN'S REGULAR SIZES

5280-28\* GREEN | 5280-30\* ORANGE  
5280-63\* BLUE | 5280-29\* BLACK  
S-3XL



## FACTORY JACKET

- » Flex Liner compatible (See pages 32-33)
- » Soft nylon fabric provides a flexible comfort fit
- » 100-gram 3M™ Thinsulate™ Platinum Insulation for warmth without bulk
- » SNO-TEX waterproof, breathable coated shell fabric keeps you dry
- » 360° reflectivity to increase visibility in low light conditions
- » Interior chest pocket

### MEN'S REGULAR SIZES

5270-56\* BLACK -570 4XL | -571 5XL  
5270-58\* GREEN -590 4XL | -591 5XL  
XS-5XL





# HIGH PERFORMANCE

## AUTHORITY JACKET

- » Flex Liner compatible (See pages 32-33)
- » Stealth black design and black tonal graphics
- » 100-gram 3M™ Thinsulate™ Platinum Insulation for warmth without bulk
- » SNO-TEX waterproof, breathable coated shell fabric keeps you dry
- » 360° reflectivity to increase visibility in low light conditions
- » Interior chest pocket, YKK zippers, magnetic closure front zipper flap

**MEN'S REGULAR SIZES**  
5280-32\* BLACK  
S-3XL



## STEALTH JACKET

- » Flex Liner compatible (See pages 32-33)
- » Soft nylon fabric provides a flexible comfort fit
- » 100-gram 3M™ Thinsulate™ Platinum Insulation for warmth without bulk
- » SNO-TEX waterproof, breathable coated shell fabric keeps you dry
- » 360° reflectivity to increase visibility in low light conditions
- » Interior chest pocket

**MEN'S REGULAR SIZES**  
5270-55\* BLACK | 5271-19\* ORANGE  
5271-20\* GREEN  
S-3XL



RACE EDITION

HIGH PERFORMANCE

CROSSOVER/MOUNTAIN

FLEX LINERS

PANTS & BIBS

BASE LAYERS

MID-LAYERS

CASUAL OUTERWEAR

YOUTH





# HIGH PERFORMANCE

### TEAM ADVANTAGE JACKET

- » Quality insulated construction at a great value for moderate to extreme cold riding conditions
- » 180-gram 3M™ Thinsulate™ Insulation for warmth without bulk
- » 360° reflectivity
- » YKK zippers for secure, smooth open and close operation
- » External chest storage pocket
- » Interior pocket for phone/music storage and cord routing

**MEN'S REGULAR SIZES**  
5280-03\* BLACK/LIME | 5280-62\* LIME  
5280-05\* RED | 5280-04\* BLACK  
S-3XL

### EDGE ADVANTAGE JACKET

- » Quality insulated construction at a great value for moderate to extreme cold riding conditions
- » 180-gram 3M™ Thinsulate™ Insulation for warmth without bulk
- » 360° reflectivity to increase visibility in low light conditions
- » YKK zippers for secure, smooth open and close operation
- » External chest storage pocket
- » Interior pocket for phone/music storage and cord routing

**MEN'S REGULAR SIZES**  
5290-16\* GREEN | 5290-17\* BLACK  
5290-18\* ORANGE | 5290-19\* GRAY  
S-3XL





# HIGH PERFORMANCE

## RACING JACKET

- » 100-gram 3M™ Thinsulate™ Platinum Insulation
- » Adjustable hook-and-loop cuffs
- » Hand pockets and interior phone/MP3 pocket

**WOMEN'S REGULAR SIZES**  
5280-37\* LIME/GRAY | 5280-66\* BLACK/GRAY  
XS-2XL



## CHAMPION ADVANTAGE JACKET

- » Quality insulated construction at a great value for moderate to extreme cold riding conditions
- » 180-gram 3M™ Thinsulate™ Insulation for warmth without bulk
- » 360° reflectivity
- » YKK zippers for secure, smooth open and close operation
- » External chest storage pocket
- » Interior pocket for phone/music storage and cord routing

**MEN'S REGULAR SIZES**  
5280-00\* GRAY/GREEN | 5280-01\* GRAY/BLACK  
S-3XL



## NORTHLAND JACKET

- » 100-gram 3M™ Thinsulate™ Insulation
- » Hood with drawcord and separate collar for maximum warmth
- » Wind-blocking magnetic front zipper flap
- » Lycra® inner cuff for comfort fit

**WOMEN'S REGULAR SIZES**  
5280-38\* PINK | 5280-39\* TEAL | 5280-41\* BLACK  
XS-2XL





# CONQUER THE ELEMENTS IN ULTIMATE COMFORT.

Built for changing weather and riding hard, Crossover/Mountain Arcticwear gives you the flexibility and comfort you require.



**3M** Scotchlite™  
Reflective Material

**3M** Thinsulate Platinum  
INSULATION



CROSSOVER/MOUNTAIN



ALPINE JACKET

- » Non-insulated four-way stretch nylon outer shell fabric provides great flexibility and free motion
- » SNO-SHIELD two-layer shell fabric with fully taped waterproof seams
- » 10,000mm waterproof, 20,000g/m<sup>2</sup> breathable
- » Includes removable hood
- » Front and back zippered vents, 360° reflectivity
- » YKK zippers and Lycra® cuffs with thumbhole

**MEN'S REGULAR SIZES**  
5290-20\* GREEN | 5290-21\* GRAY  
5290-23\* PURPLE  
S-3XL



HIGHLAND JACKET

- TALL SIZES AVAILABLE**
- » Non-insulated nylon shell with mesh lining
  - » SNO-ZONE body mapped fabrics for durability, stretch and breathability
  - » Four-way stretch fabric on shoulders for flexibility
  - » SNO-SHIELD three-layer shell fabric with fully taped waterproof seams, 10,000mm waterproof, 20,000g/m<sup>2</sup> breathable
  - » Multiple back and front zippered vents to help regulate body climate
  - » Flex Liner compatible — will zip into all jackets that accept Flex Liners
  - » Large coverage reflective trims, YKK zippers, Lycra® cuff with thumbhole

**MEN'S REGULAR & TALL SIZES**  
5290-24\* BLACK/GREEN | 5290-25\* BLACK/ORANGE  
5290-26\* GREEN/BLUE  
S-3XL, MT-2XLT





ELEVATION 3-1 JACKET

- » 3 jackets in 1 system
- » SNO-SHIELD three-layer shell fabric with fully taped waterproof seams
- » Non-insulated nylon shell with mesh lining, 10,000mm waterproof, 20,000g/m<sup>2</sup> breathable
- » Includes nylon shell, 60-gram insulated wearable removable liner
- » Back and front vents to help regulate your internal body climate
- » YKK zippers, Lycra® cuff with thumbhole

MEN'S REGULAR SIZES

5290-27\* BLACK/GREEN  
5290-28\* ORANGE  
S-3XL

LINER

WOMEN'S REGULAR SIZES

5290-29\* BLACK/GREEN  
5290-30\* BLACK/PURPLE  
S-2XL

LINER

PRO MTN SUIT

- » SNO-SHIELD three-layer shell fabric with fully taped waterproof seams keeps you dry
- » Adjustable interior suspender system and waist belt for secure and comfortable fit
- » Removable hood
- » Water-resistant zippers
- » Stretch back and waist panel for free motion and flexibility
- » Full-length side zippers
- » Sno-Lock™ leg cuff

MEN'S REGULAR SIZES

5270-60\* BLACK | -610 4XL | -611 5XL  
5280-45\* LIME | -460 4XL | -461 5XL  
XS-5XL



# FLEX LINERS

## TECH 150-GRAM NYLON ZIP-OUT TALL SIZES AVAILABLE

- » Flex Liner compatible — will zip into all jackets that accept Flex Liners
- » 150-gram 3M™ Thinsulate™ Platinum Insulation
- » Waterproof, breathable nylon shell fabric
- » Four-way stretch fabric on cuffs
- » Durable YKK front zipper
- » Wearable by itself in spring or fall

**MEN'S REGULAR & TALL SIZES**  
5290-31\* BLACK | -320 4XL | -321 5XL  
S-5XL, MT-2XLT

**WOMEN'S REGULAR  
& TALL SIZES**  
5290-33\* BLACK | -340 4XL  
S-4XL, MT-2XLT



## TECH 100-GRAM ZONED ZIP-OUT TALL SIZES AVAILABLE

- » Flex Liner compatible — will zip into all jackets that accept Flex Liners
- » SNO-ZONE construction — windproof polyester shell fabric on chest and shoulders, stretch fleece for warmth and breathability
- » Four-way power stretch fabric on underarm, sides and cuffs
- » YKK front zipper
- » 100-gram 3M™ Thinsulate™ Platinum Insulation
- » Wearable by itself in spring or fall

**MEN'S REGULAR & TALL SIZES**  
5290-35\* BLACK | -360 4XL | -361 5XL  
S-5XL, MT-2XLT

**WOMEN'S REGULAR & TALL SIZES**  
5290-37\* BLACK | -380 4XL  
S-4XL, MT-2XLT



## TECH FLEECE ZIP-OUT TALL SIZES AVAILABLE

- » Flex Liner compatible — will zip into all jackets that accept Flex Liners
- » SNO-ZONE construction — polyester fleece on body; weather resistant softshell on shoulders and arms; mesh lining for air circulation and comfort
- » Bottom drawcord blocks out wind
- » Two hand pockets and chest pocket
- » Wearable by itself in spring or fall

**MEN'S REGULAR & TALL SIZES**  
5290-39\* BLACK | -400 4XL | -401 5XL  
S-5XL, MT-2XLT

**WOMEN'S REGULAR & TALL SIZES**  
5290-41\* BLACK | -420 4XL  
S-4XL, MT-2XLT



RACE EDITION

HIGH PERFORMANCE

CROSSOVER/MOUNTAIN

FLEX LINERS

PANTS & BIBS

BASE LAYERS

MID-LAYERS

CASUAL OUTERWEAR

YOUTH



MEN'S PANTS & BIBS

3M Thinsulate Platinum INSULATION



PREMIUM BIBS  
TALL SIZES AVAILABLE

- » 200-gram 3M™ Thinsulate™ Platinum Insulation
- » SNO-TEX nylon fabric — 100% seam sealed
- » Sno-Lock cuffs
- » Moisture-blocking seat insert
- » Accordion stretch knee panels
- » Full-length side zippers
- » Chest bib on front, sides and back

**MEN'S REGULAR & TALL SIZES**  
5270-94\* | -950 4XL | -951 5XL  
S-5XL, MT-2XLT

5270-96\* SHORT-LENGTH INSEAM (29-IN.)  
S-3XL

3M Thinsulate Platinum INSULATION



PREMIUM PANTS  
TALL SIZES AVAILABLE

- » 200-gram 3M™ Thinsulate™ Platinum Insulation
- » SNO-TEX nylon fabric — 100% seam sealed
- » Sno-Lock cuffs
- » Moisture-blocking seat insert
- » Accordion stretch knee panels
- » Full-length side zippers
- » Removable suspenders and zip-off back bib for easy conversion to pants

**MEN'S REGULAR & TALL SIZES**  
5270-98\*  
S-3XL, MT-2XLT

3M Thinsulate Platinum INSULATION



ADVANTAGE BIBS  
TALL SIZES AVAILABLE

- » 200-gram 3M™ Thinsulate™ Insulation
- » Moisture-blocking knee and seat inserts
- » Critical seam sealed — knees and seat
- » Durable, waterproof fabric coating

**MEN'S REGULAR & TALL SIZES**  
5250-78\*  
S-3XL, MT-2XLT

HIGHLAND CROSSOVER BIBS  
TALL SIZES AVAILABLE

- » SNO-SHIELD three-layer waterproof, breathable laminated nylon, non-insulated
- » Full bib front with stretch side rib cutout for comfort and mobility
- » 10,000mm waterproof, 20,000g/m² breathable
- » Includes 80-gram 3M™ Thinsulate™ Platinum Insulation seat insert
- » Sno-Lock cuffs
- » Moisture-blocking seat insert
- » Adjustable suspenders
- » YKK full-length side zippers

**MEN'S REGULAR & TALL SIZES**  
5290-43\* | -440 4XL | -441 5XL  
S-5XL, MT-2XLT



CHAMPION BIBS

- » 200-gram 3M™ Thinsulate™ Platinum Insulation
- » SNO-SHIELD three-layer waterproof, breathable laminate
- » Sno-Lock cuffs
- » Moisture-blocking seat insert
- » Full-length side zippers
- » Adjustable waist cinch for a custom, tailored fit

**MEN'S REGULAR SIZES**  
5271-31\* | -310 XS | -320 4XL | -321 5XL  
XS-5XL

RACE EDITION

HIGH PERFORMANCE

CROSSOVER/MOUNTAIN

FLEX LINERS

PANTS & BIBS

BASE LAYERS

MID-LAYERS

CASUAL OUTERWEAR

YOUTH



# WOMEN'S PANTS & BIBS



**PREMIUM BIBS**  
TALL SIZES AVAILABLE

- » 200-gram 3M™ Thinsulate™ Platinum Insulation
- » SNO-TEX nylon fabric — 100% seam sealed
- » Sno-Lock cuffs
- » Convenient drop-seat style
- » Moisture-blocking seat insert
- » Accordion stretch knee panels
- » Full-length side zippers
- » Chest bib on front, sides and lower back

**WOMEN'S REGULAR & TALL SIZES**  
5270-92\* | -920 XS | -930 4XL  
XS-4XL, MT-XLT

5270-97\* | -970 XS  
SHORT-LENGTH INSEAM (29-IN.) XS-2XL



**PREMIUM PANTS**  
TALL SIZES AVAILABLE

- » 200-gram 3M™ Thinsulate™ Platinum Insulation
- » SNO-TEX nylon fabric — 100% seam sealed
- » Sno-Lock cuffs
- » Moisture-blocking seat insert with drop seat
- » Accordion stretch knee panels
- » Full-length side zippers
- » Removable suspenders for easy conversion to pants

**WOMEN'S REGULAR & TALL SIZES**  
5270-99\* | -990 XS  
XS-2XL, MT-XLT



**ADVANTAGE BIBS**  
TALL SIZES AVAILABLE

- » 200-gram 3M™ Thinsulate™ Insulation
- » Moisture-blocking knee and seat inserts
- » Sno-Lock cuffs
- » Convenient drop-seat style
- » Critical seam sealed — knees and seat
- » Durable, waterproof fabric coating

**WOMEN'S REGULAR & TALL SIZES**  
5280-69\* GRAY | -690 XS  
5250-76\* BLACK | -760 XS  
XS-2XL, MT-XLT



**CROSSOVER BIBS**  
TALL SIZES AVAILABLE

- » SNO-SHIELD three-layer waterproof, breathable nylon fabric
- » 80-gram 3M™ Thinsulate™ Platinum Insulation
- » Full bib front with stretch side rib cutout for comfort and mobility
- » 10,000mm waterproof, 20,000g/m² breathable
- » Sno-Lock cuffs
- » Convenient drop-seat style
- » Moisture-blocking seat insert
- » Adjustable suspenders
- » YKK full-length side zippers

**WOMEN'S REGULAR & TALL SIZES**  
5290-45\* | -450 XS | -460 4XL  
XS-4XL, MT-XLT



# BASE LAYERS



## SIMPLE GUIDELINES FOR STAYING WARM, DRY AND COMFORTABLE

### OUTER LAYER WEATHER PROTECTION

Protects you from the elements while channeling moisture out. Available in multiple insulation and shell options for a variety of riding conditions.

**Find outer layers on pages 8-37**

### MID-LAYER HEAT RETENTION

Traps heat between your layers and wicks moisture away from your body. Available in several weights for customizing your insulation level.

**Find mid-layers on pages 40-41**

### BASE LAYER MOISTURE CONTROL

Wicks moisture away from your body while providing light insulation. Available in multiple weights for customizing your internal climate.

**Find base layers on page 39**



HELMETS pgs 50-53



GOGGLES & HEADGEAR pgs 54-56



BOOTS pgs 60-61



GLOVES pgs 57-59



SOCKS pg 39

### LIGHTWEIGHT BASE-LAYER CREW TOP & PANTS

- » Polyester fabric for extreme moisture wicking and comfort
- » Brushed inside for added comfort and warmth
- » Athletic fit, not compression
- » Comfortable flatlock seams that prevent chafing
- » Antimicrobial protected, pill-resistant fabric
- » Super-comfort elastic waistband on pants

**MEN'S CREW TOP**  
5282-16\* S-3XL

**MEN'S PANTS**  
5282-17\* S-3XL

**WOMEN'S CREW TOP**  
5282-18\* XS-2XL

**WOMEN'S PANTS**  
5282-19\* XS-2XL



### BASE-LAYER TECH TEE

- » Moisture-wicking fabric moves moisture away from your body
- » High mechanical stretch for added comfort and mobility
- » 100% polyester

**5283-02\* BLACK**  
**5283-03\* GREEN**  
S-3XL



### BASE-LAYER TECH TEE

- » Moisture-wicking fabric moves moisture away from your body
- » High mechanical stretch for added comfort and mobility
- » 100% polyester

**5283-04\* NAVY**  
**5283-05\* PURPLE**  
XS-2XL



### LINER SOCK

- » Layer under socks for added warmth without changing the fit of your footwear
- » 96% polyester wicks away moisture to help keep your feet dry
- » 3% Lycra®, 1% nylon material provides strength and keeps shape

**5282-222 S/M**  
**5282-224 L/XL**



### MID-WEIGHT WOOL SOCK

- » 61% merino wool provides warmth and helps control moisture
- » 22% nylon
- » 1% spandex adds strength and keeps shape
- » 16% acrylic for additional moisture wicking

**5282-202 S/M**  
**5282-204 L/XL**



### AIRCAT TURTLENECK

- » 100% ring-spun cotton provides more durability and a softer feel

**5283-01\* BLACK**  
**5283-00\* GRAY**  
S-4XL

RACE EDITION

HIGH PERFORMANCE

CROSSOVER/MOUNTAIN

FLEX LINERS

PANTS & BIBS

BASE LAYERS

MID-LAYERS

CASUAL OUTERWEAR

YOUTH



MID-LAYERS

SYNTHETIC VEST

- » Exterior fabric is weather resistant
- » Lightweight synthetic fill for warmth without bulk
- » Microfleece collar lining
- » 100% polyester

5283-06\*  
S-3XL

WOMEN'S  
5283-07\*  
XS-2XL



AIRCAT MIDWEIGHT FLEECE 1/4-ZIP

- » Grid-texture polyester exterior wicks moisture and increases durability
- » Fleece-lined interior traps warmth
- » 100% polyester

5273-55\*  
S-4XL

WOMEN'S  
5283-21\*  
XS-3XL



LIGHTWEIGHT ARCTIC CAT 1/4-ZIP

- » Moisture-wicking fabric breathes and keeps you dry
- » Polyester is wrinkle resistant for on-the-go convenience
- » 92% polyester, 8% spandex

5283-45\* NAVY | 5283-44\* BLACK  
S-2XL

WOMEN'S  
5273-98\* LIME | 5283-42\* BLACK  
S-2XL

HEAVYWEIGHT AIRCAT FLEECE FULL-ZIP

- » Brushed microfleece for warmth and comfort
- » Flat-lock stitching prevents bulk
- » Adjustable pull-cord and cordlock at waist
- » 100% polyester

5283-19\*  
S-4XL

WOMEN'S  
5283-20\*  
XS-3XL





# CASUAL OUTERWEAR



### UTILITY JACKET

- » Wax-coated exterior polyester fabric is water resistant and durable
- » SNO-ZONE construction 3M™ Thinsulate™ Insulation (100 grams in body, 60 grams in sleeves)
- » Large insulated hand pockets
- » Hook-and-loop cuffs
- » Exterior chest pocket
- » Interior phone/MP3 pocket
- » Women's jacket includes detachable hood

5280-52\* BLACK | 5280-60\* OLIVE  
S-3XL

**WOMEN'S**  
5280-68\* BLACK | 5280-67\* OLIVE  
XS-2XL



### AIRCAT SYNTHETIC COAT

- » Synthetic 3M™ Thinsulate™ Featherless Insulation — 600-fill power
- » Soft, windproof nylon shell

5260-91\*  
XS-3XL



### AIRCAT PARKA

- » Synthetic 3M™ Thinsulate™ Featherless Insulation — 400 grams
- » Soft, windproof and water-resistant nylon shell
- » Hood with elastic drawcord
- » Lycra® interior cuff keeps the cold out

5280-59\*  
S-2XL

### AIRCAT SOFTSHELL

- » Bonded laminate with soft-touch interior
- » Wind- and water-resistant to help keep you dry and comfortable
- » Comfort stretch and raglan sleeves for added mobility
- » 96% polyester, 4% elastane

5283-17\*  
XS-4XL

**WOMEN'S**  
5273-60\*  
XS-5XL







TEAM ARCTIC ON-TRACK JACKET

- » 200-gram 3M™ Thinsulate™ Insulation
- » Authentic Team Arctic Racing logos
- » Reflective trims for safety
- » YKK zippers
- » Glove D-ring

5281-26\*  
4-16



TEAM ARCTIC PANTS

- » 200-gram 3M™ Thinsulate™ Insulation
- » Moisture-blocking knee and seat inserts
- » Full-length side zippers

5281-28\* LIME/GRAY | 5280-47\* BLACK  
4-16



TEAM ARCTIC JACKET

- » 200-gram 3M™ Thinsulate™ Insulation
- » Authentic Team Arctic Racing graphics
- » Reflective trims for safety
- » YKK zippers
- » Glove D-ring

5281-27\* LIME/GRAY | 5290-47\* BLACK  
5290-48\* ORANGE | 5281-29\* PURPLE  
4-16





YOUTH

200 ADVANTAGE JACKET

- » 140-gram insulation
- » Great value
- » Reflective trims for increased visibility in low light conditions
- » YKK zippers
- » Soft rib-knit cuffs

5290-49\* GREEN | 5290-50\* PURPLE  
4-16



TEAM ARCTIC HIBBERT JACKET

- » 200-gram 3M™ Thinsulate™ Insulation
- » Tucker Hibbert and Team Arctic race-style graphics
- » Hand pockets and interior phone/MP3 pocket
- » YKK zippers
- » Reflective trim

5280-21\* LIME | 5280-23\* PINK  
4-16



TEAM ARCTIC ONE-PIECE SUIT

- » 200-gram insulation
- » Exclusive Arctic Cat sublimated print
- » Moisture-blocking knee and seat inserts

5280-50\* LIME | 5280-51\* PINK  
2-7

\*ADD CORRESPONDING SIZE NUMBER AT  
END OF 6-DIGIT CODE

2	0	3	1	4	2	5	3	6	4	7	5
---	---	---	---	---	---	---	---	---	---	---	---



ADVANTAGE BIBS

- » 200-gram 3M™ Thinsulate™ Insulation
- » Moisture-blocking knee and seat inserts
- » Sno-Lock cuffs to keep boots snow-free

5241-01\*  
4-16

\*ADD CORRESPONDING SIZE NUMBER AT END OF 6-DIGIT CODE

4	0	6	1	8	2	10	3	12	4	14	5	16	6
---	---	---	---	---	---	----	---	----	---	----	---	----	---

RACE EDITION

HIGH PERFORMANCE

CROSSOVER/MOUNTAIN

FLEX LINERS

PANTS & BIBS

BASE LAYERS

MID-LAYERS

CASUAL OUTERWEAR

YOUTH



YOUTH

YOUTH HELMET SIZING CHART			
	HAT SIZE	HEAD CIRCUMFERENCE	
M	6 1/8 - 6 1/4	19" - 19 1/4"	48cm - 49cm
L	6 3/8 - 6 1/2	19 1/2" - 20"	50cm - 51cm
XL	6 1/2 - 6 3/4	20 1/2" - 20 3/4"	52cm - 53cm



YOUTH PFP

- » Shock-absorbing, DOT-approved fiberglass shell
- » Anti-fog, dual-pane face shield
- » Available in three youth sizes

5252-50\* BLACK  
M-XL

5292-01\* PURPLE | 5292-00\* GREEN  
M-XL

YOUTH MX TEAM ARCTIC

- » DOT-approved ABS thermoplastic shell
- » Soft brushed nylon interior

5272-37\* GREEN  
M-L



YOUTH AIRCAT GOGGLES

- » Fits youth MX helmets
- » Superior visibility from scratch-resistant dual-pane lens
- » Durable, rugged frame with triple-layer face foam
- » Adjustable custom Arctic Cat woven strap

5292-020 BLACK

YOUTH GLOVES & MITTS

- » 100-gram 3M™ Thinsulate™ Platinum Insulation
- » Leather on palm, fingers and thumb for durability
- » Wide-barrel cuff with hidden knit cuff to block out snow and cold

GLOVES

5292-03\* GREEN  
5292-05\* BLACK

MITTS

5292-06\* BLACK  
5292-04\* GREEN  
S-XL

\*ADD CORRESPONDING SIZE NUMBER AT END OF 6-DIGIT CODE

S	1	M	2	L	4	XL	6
---	---	---	---	---	---	----	---



YOUTH EXTREME MITTS

- » 200-gram 3M™ Thinsulate™ Platinum Insulation for extreme cold weather protection
- » Leather on palm, fingers and thumb for durability
- » Wide-barrel cuff with hidden knit cuff to block out snow and cold

5292-07\*  
S-XL

\*ADD CORRESPONDING SIZE NUMBER AT END OF 6-DIGIT CODE

S	1	M	2	L	4	XL	6
---	---	---	---	---	---	----	---



-40 °F  
-40 °C

YOUTH BOOTS

- » Water-resistant, durable 500-denier nylon uppers to keep you dry
- » Removable 6mm liner provides warmth
- » Waterproof, injection-molded bottom

5262-51\* LIME 8-13, 1-4 | -520 YOUTH 5 | -521 YOUTH 6  
5262-53\* PINK 8-13, 1-4 | -540 YOUTH 5 | -541 YOUTH 6

LINERS

4252-14\* 8-13, 1-4 | -150 YOUTH 5 | -151 YOUTH 6

\*ADD CORRESPONDING SIZE NUMBER AT END OF 6-DIGIT CODE

CHILD							YOUTH				
SIZE	8	9	10	11	12	13	SIZE	1	2	3	4
P/N	0	1	2	3	4	5	P/N	6	7	8	9



YOUTH VILOFT®  
BALACLAVA

- » Polyester fabric wicks moisture
- » New smaller size for youth

5272-439 BLACK



YOUTH PROCLAVA

- » Moisture-wicking polyester fabric top
- » Polyester fleece fabric protects face and neck
- » Full bib design
- » Does not affect helmet sizing

5252-467 BLACK

\*ADD CORRESPONDING SIZE NUMBER AT END OF 6-DIGIT CODE

M	2	L	4	XL	6
---	---	---	---	----	---





# HELMETS

MX HELMET SIZING CHART		
	HAT SIZE	HEAD CIRCUMFERENCE
S	6 7/8 - 6 7/8	21 1/2" - 21 5/8" / 54cm - 55cm
M	7 - 7 1/8	22" - 22 1/2" / 56cm - 57cm
L	7 1/4 - 7 3/8	22 3/4" - 23 1/4" / 58cm - 59cm
XL	7 1/2 - 7 5/8	23 5/8" - 24" / 60cm - 61cm
2XL	7 3/4 - 7 7/8	24 1/2" - 24 7/8" / 62cm - 63cm



### MX SNO-CROSS™ SNO PRO®

- » Extremely lightweight (1,100 grams) +/- 50 grams
- » DOT- and ECE 22/05-approved 100% full carbon fiber shell
- » Multiple air vents with anti-intrusion aluminum nets
- » Removable cheek pads with J.I.E.R (Just 1 Emergency Remove)
- » Removable breath deflector included

5272-28\* GREEN | 5272-30\* BLACK | 5272-29\* ORANGE  
S-2XL



### MX AIRCAT

- » DOT- and ECE 22/05-approved fiberglass/carbon fiber blend shell
- » Multiple air vents
- » Removable breath deflector included

5282-11\* BLACK | 5282-13\* GREEN | 5282-12\* ORANGE  
S-2XL

5272-34\* SOLID BLACK  
S-2XL





HELMETS



ARCTIC CAT MODULAR WITH ELECTRIC SHIELD

- » Secure flip-up chinbar is easily operated by front center lock tab
- » Integrated retractable orange sun shield for use in mild weather conditions
- » Dual lens electric shield with coil and power cords included
- » DOT-approved thermoplastic injection-molded shell
- » Removable breath deflector and chin curtain
- » Adjustable chin vents direct air across inside of shield to help reduce shield fogging

5292-10\* GREEN | 5292-09\* BLACK | 5292-11\* PURPLE | 5292-08\* ORANGE  
XS-2XL

5252-51\* SOLID BLACK  
XS-2XL

5252-552 REPLACEMENT ELECTRIC SHIELD

4202-922 REPLACEMENT ELECTRIC COIL CORD

4202-923 REPLACEMENT ELECTRIC POWER CORD



TXi AC

- » Shock-absorbing, DOT-approved fiberglass shell and chinbar
- » Fog-reducing, three-way vapor control system delivers fresh air, circulates moist air out and moves warm air out the top of your head
- » Form-fitting, fog-resistant, replaceable custom eyepoint
- » Blocks moisture from your breath
- » Moisture-wicking SuperComfort interior lining
- » Glare-reducing removable visor
- » Anti-fog, dual-pane face shield
- » Soft, stretchable chin curtain provides wind protection
- » Durable, reliable face shield secures tightly with a one-screw ratchet

5282-14\* GREEN | 5282-24\* BLACK  
2XS-4XL

4262-51\* SOLID BLACK  
2XS-4XL

4212-848 ELECTRIC SHIELD KIT (INCLUDES COIL & POWER CORD)



MODULAR HELMET SIZING CHART

	HAT SIZE	HEAD CIRCUMFERENCE
XS	6 <sup>5</sup> / <sub>8</sub> – 6 <sup>7</sup> / <sub>8</sub>	20 <sup>7</sup> / <sub>8</sub> " – 21 <sup>1</sup> / <sub>4</sub> " / 53cm – 54cm
S	6 <sup>7</sup> / <sub>8</sub> – 7	21 <sup>5</sup> / <sub>8</sub> " – 22" / 55cm – 56cm
M	7 <sup>1</sup> / <sub>8</sub> – 7 <sup>1</sup> / <sub>4</sub>	22 <sup>3</sup> / <sub>8</sub> " – 22 <sup>3</sup> / <sub>4</sub> " / 57cm – 58cm
L	7 <sup>3</sup> / <sub>8</sub> – 7 <sup>1</sup> / <sub>2</sub>	23 <sup>1</sup> / <sub>4</sub> " – 23 <sup>5</sup> / <sub>8</sub> " / 59cm – 60cm
XL	7 <sup>5</sup> / <sub>8</sub> – 7 <sup>3</sup> / <sub>4</sub>	24" – 24 <sup>3</sup> / <sub>8</sub> " / 61cm – 62cm
2XL	7 <sup>7</sup> / <sub>8</sub> – 8	24 <sup>3</sup> / <sub>4</sub> " – 25 <sup>1</sup> / <sub>4</sub> " / 63cm – 64cm

TXi HELMET SIZING CHART

	HAT SIZE	HEAD CIRCUMFERENCE
2XS	6 <sup>1</sup> / <sub>2</sub> – 6 <sup>5</sup> / <sub>8</sub>	20 <sup>1</sup> / <sub>2</sub> " – 20 <sup>7</sup> / <sub>8</sub> " / 52cm – 53cm
XS	6 <sup>3</sup> / <sub>4</sub> – 6 <sup>7</sup> / <sub>8</sub>	21 <sup>1</sup> / <sub>4</sub> " – 21 <sup>5</sup> / <sub>8</sub> " / 54cm – 55cm
S	7 – 7 <sup>1</sup> / <sub>8</sub>	22" – 22 <sup>1</sup> / <sub>2</sub> " / 56cm – 57cm
M	7 <sup>1</sup> / <sub>4</sub> – 7 <sup>3</sup> / <sub>8</sub>	22 <sup>3</sup> / <sub>4</sub> " – 23 <sup>1</sup> / <sub>4</sub> " / 58cm – 59cm
L	7 <sup>1</sup> / <sub>2</sub> – 7 <sup>5</sup> / <sub>8</sub>	23 <sup>5</sup> / <sub>8</sub> " – 24" / 60cm – 61cm
XL	7 <sup>3</sup> / <sub>4</sub> – 7 <sup>7</sup> / <sub>8</sub>	24 <sup>1</sup> / <sub>2</sub> " – 24 <sup>7</sup> / <sub>8</sub> " / 62cm – 63cm
2XL	8 – 8 <sup>1</sup> / <sub>4</sub>	25 <sup>1</sup> / <sub>8</sub> " – 25 <sup>1</sup> / <sub>2</sub> " / 64cm – 65cm
3XL	8 <sup>3</sup> / <sub>8</sub> – 8 <sup>1</sup> / <sub>2</sub>	26" – 26 <sup>3</sup> / <sub>8</sub> " / 66cm – 67cm
4XL	8 <sup>1</sup> / <sub>2</sub> – 8 <sup>5</sup> / <sub>8</sub>	26 <sup>3</sup> / <sub>4</sub> " – 27 <sup>1</sup> / <sub>8</sub> " / 68cm – 69cm





GOGGLES



AUTHORITY GOGGLE

- » Pivoting outriggers provide custom fit to helmet
- » Flexible TPU frame with comfort triple-layer face foam provides a secure fit
- » Ventilated frame helps reduce fogging
- » Includes nose guard to help deflect ice and snow spray
- » Custom Arctic Cat woven strap with anti-slip silicone stripes on back
- » Cylindrical dual lens with anti-scratch and anti-fog coating
- » Wide field of view

5292-120 BLACK  
5292-121 GREEN



AUTHORITY/DEFENDER REPLACEMENT LENS

- CLEAR**
- » Provides maximum light allowance for most weather conditions; great for day or night riding
- YELLOW**
- » Helps brighten terrain and increases contrast and definition in flat and low light conditions
- GREEN MIRROR/PERSIMMON**
- » Multilayer mirror maximizes color definition, increases depth perception and intensifies light
- BROWN**
- » Helps block out glare without changing overall color perception

5292-286 CLEAR | 5292-287 YELLOW  
5292-289 BROWN

5292-288 GREEN MIRROR/PERSIMMON



DEFENDER GOGGLE

- » Flexible TPU frame with comfort triple-layer face foam provides a secure fit
- » Ventilated frame helps reduce fogging
- » Includes nose guard to help deflect ice and snow spray
- » Custom Arctic Cat woven strap with anti-slip silicone stripes on back of strap
- » Cylindrical dual lens with anti-scratch and anti-fog coating
- » Brown tint polycarbonate lens
- » Wide field of view

5292-130 BLACK | 5292-131 GREEN



ANTI-FOG CLEANER

- » Cleans and adds fog-resistant protection to goggles, shields and glasses

4222-012



CHAMPION GOGGLE

- » Flexible urethane-blend frame
- » Custom Arctic Cat woven strap lined with silicone ribbing
- » Persimmon tint, dual-pane, anti-scratch, anti-fog lens
- » Extra wide, triple-layer face foam

5292-280 BLACK | 5292-281 GREEN



CHAMPION REPLACEMENT LENS

- CLEAR**
- » Provides maximum light allowance for most weather conditions; great for day or night riding
- YELLOW**
- » Helps brighten terrain and increases contrast and definition in flat and low light conditions
- BLUE MIRROR/PERSIMMON**
- » Multilayer mirror maximizes color definition, increases depth perception and intensifies light
- SMOKE**
- » Helps block out glare without changing overall color perception

5292-282 CLEAR | 5292-284 YELLOW  
5292-283 SMOKE

5292-285 BLUE MIRROR/PERSIMMON



HEADGEAR



HINGED BALACLAVA

- » Warm, moisture-wicking polyester fleece
  - » Hinged face design for an adjustable, secure fit
- 5242-464 S/M | 5242-466 L/XL



VILOFT BALACLAVA

- » Warm, moisture-wicking polyester fabric
- 5252-478
- 5252-490 12 PACKAGES WITH DISPLAY BOX



SNO PRO® BALACLAVA

- » Lycra® nylon fabric for warmth and comfort-stretch fit
  - » Extended neck bib for added cold-weather protection
- 5282-154 L | 5282-156 XL



ARCTICTEK BALACLAVA

- » Warm, moisture-wicking polyester fleece
  - » Smooth, stretchy outer shell for under-helmet fit
  - » Generous neck coverage
- 5252-465



PROCLAVA

- » Thin, moisture-wicking polyester fabric that does not affect helmet sizing
  - » Polyester fleece protects face and neck
  - » Full neck bib for cold-weather protection
- 5252-466



NECK BRACE DICKIE

- » Full collar with comfortable microfleece lining
  - » Windproof and water-resistant nylon shell
- 5221-454 L | 5221-456 XL



NO FOG MASK

- » Form-fitting breath deflector
  - » Wind-blocking neoprene shell
  - » Fleece lining for warmth and comfort
- 5262-584 L | 5262-586 XL



NO FOG MX MASK

- » Form-fitting breath deflector
  - » Wind-blocking neoprene shell
  - » Fleece lining for warmth and comfort
  - » Provides head and neck coverage
- 5262-594 M/L



FLEECE NECKIE

- » Warm, moisture-wicking fleece
  - » Protects chin and neck from cold
- 5252-468



CHAMPION

- » Durable, Grade A drum-dyed leather on palm, fingers and thumb
- » Flexible, windproof, soft shell on back of hand
- » Lightweight insulation with moisture-managed tricot lining provides superior grip and flexibility
- » SNO-TEX waterproof, breathable insert
- » Articulated palm with digital suede grip

5292-16\*  
S-2XL



MOUNTAIN TEC

- » Durable Grade A leather on palm, fingers and thumb
- » Windproof soft shell on back of hand
- » Pre-curve control grip stitch for superior grip control
- » Lightweight insulation construction for superior grip and flexibility

5292-23\*  
XS-2XL



RACE GRIP

- » Race glove tested and worn by Tucker Hibbert
- » Washable, durable Clarino synthetic leather on palm, fingers and thumb
- » Stretch neoprene panels on back of hand
- » Smooth tricot lining for moisture control
- » Non-insulated, race grip design for secure grip

5262-64\* GREEN | 5282-07\* BLACK  
XS-2XL



NEOPRENE

- » Washable, durable Clarino™ synthetic leather on palm, fingers and thumb
- » SNO-TEX waterproof, breathable insert
- » 100-gram 3M™ Thinsulate™ Platinum Insulation with moisture-managed tricot lining provides superior grip and flexibility
- » Windproof and water-resistant neoprene shell fabric

5282-10\*  
S-2XL



WINDBLOCK

- » Soft, three-layer microfleece fabric
- » Durable leather palm patch
- » Elastic cuff for secure fit

5272-21\*  
XS-2XL

HELMETS

GOGGLES

HEADGEAR

GLOVES

BOOTS

BAGS

PROTECTION

LIGHTWEIGHT & SHELL GLOVES



# INSULATED GLOVES



**INTERCHANGER**

- » Durable Grade A leather on palm, fingers and thumb
- » 150-gram 3M™ Thinsulate™ Platinum Insulation
- » Removable 280-gram insulation polyester fleece liner
- » Wide-barrel cuff fits perfectly over jacket sleeve

**GLOVES**  
5292-18\* GREEN | 5292-19\* ORANGE  
5292-20\* BLACK | 5292-21\* PURPLE

**MITTS**  
5292-22\* BLACK  
XS-2XL



**EXTREME**

- » SNO-ZONE fabric and insulation construction
- » 200-gram 3M™ Thinsulate™ Platinum Insulation on the back of the hand for extreme warmth and 150-gram in the palm for better flexibility and grip
- » SNO-TEX waterproof, breathable insert
- » Durable Grade A leather on palm, fingers and thumb

5282-05\* GREEN | 5282-06\* BLACK  
XS-2XL



**BACKCOUNTRY**

- » 100-gram 3M™ Thinsulate™ Platinum Insulation
- » SNO-TEX waterproof, breathable insert
- » Durable Grade A leather on palm, fingers and thumb
- » Interior neoprene cuff to block out snow and cold

5282-08\* BLACK | 5282-09\* GREEN  
XS-2XL



**TEAM ARCTIC HI-CUFF LEATHER**

- » Durable, 1.0mm Grade A drum-dyed leather
- » 150-gram 3M™ Thinsulate™ Platinum Insulation provides warmth without bulk
- » Padded knuckle protection
- » Wide-barrel cuff blocks out snow and cold

5292-14\* GREEN | 5292-15\* BLACK  
S-2XL



**TOURING HI-CUFF LEATHER**

- » Durable, 1.0mm Grade A drum-dyed leather
- » 150-gram 3M™ Thinsulate™ Platinum Insulation provides warmth without bulk
- » Padded knuckle protection
- » Wide-barrel cuff blocks out snow and cold

5282-03\*  
S-2XL



**LOW-CUFF LEATHER**

- » Durable, 1.0mm Grade A drum-dyed leather
- » 150-gram 3M™ Thinsulate™ Platinum Insulation provides warmth without bulk
- » Padded knuckle protection

5282-04\*  
S-2XL



**ADVANTAGE**

- » Water-resistant, durable nylon shell with leather on palm, fingers and thumb
- » 200-gram 3M™ Thinsulate™ Platinum Insulation provides warmth without bulk
- » Wide-barrel high cuff for secure fit

**GLOVES**  
5292-25\* GREEN  
5292-26\* BLACK  
5292-24\* ORANGE  
XS-2XL

**MITTS**  
5292-22\* BLACK  
XS-2XL





# BOOTS



## BOSS CAT™

- » Waterproof, breathable eVent® membrane keeps feet dry
- » Durable, waterproof microfiber synthetic upper
- » 1,200-gram equivalent PrimaLoft® Gold Insulation with aerogel in toe and footbed for warmth and comfort
- » Boa Coiler High Power Reel lace system with 4:1 gear ratio is the most durable Boa system in the market
- » Embossed mud guards for increased durability
- » High-performance boot designed for active riders — not intended for extreme cold conditions

5282-00\*  
7-15

\*ADD CORRESPONDING SIZE NUMBER AT END OF 6-DIGIT CODE

MEN	SIZE	7	8	9	10	11	12	13	14	15
	P/N	0	1	2	3	4	5	6	7	8

BOA® FIT TO GO FURTHER.™



-100 °F  
-74 °C

## CAT TRACKER™ SUPREME

- » Waterproof, durable 1,200-denier nylon upper
- » Seam-sealed construction
- » Removable 20mm Zylex® 4F liner and 11mm Zylex felt insole provides supreme warmth
- » Synthetic rubber bottom

5272-38\* MEN'S 7-14

### REPLACEMENT LINER

5272-39\* MEN'S 7-14

\*ADD CORRESPONDING SIZE NUMBER AT END OF 6-DIGIT CODE

MEN	SIZE	7	8	9	10	11	12	13	14
	P/N	0	1	2	3	4	5	6	7

## ADVANTAGE

- » Water-resistant full-grain leather upper
- » Removable 200B Thinsulate™ Insulation liner
- » Speed lacing system for easy-on, easy-off secure fit

5272-40\* MEN'S 7-14  
5272-41\* WOMEN'S 6-10

### REPLACEMENT LINER

5242-53\* MEN'S 7-14  
5242-54\* WOMEN'S 6-10

-40 °F  
-40 °C



\*ADD CORRESPONDING SIZE NUMBER AT END OF 6-DIGIT CODE

WOMEN		SIZE	6	7	8	9	10
		P/N	0	1	2	3	4

MEN	SIZE	7	8	9	10	11	12	13	14
	P/N	0	1	2	3	4	5	6	7



-25 °F  
-32 °C

## ARCTIC SPORT

- » Waterproof nylon upper with faux-fur snow collar
- » Seam-sealed waterproof construction
- » Fixed 200B Thinsulate™ Insulation
- » Synthetic rubber bottom

5272-42\*  
WOMEN'S 6-10

\*ADD CORRESPONDING SIZE NUMBER AT END OF 6-DIGIT CODE

WOMEN	SIZE	6	7	8	9	10
	P/N	0	1	2	3	4



BAGS



TEAM ARCTIC SLED™ ROLLER

- » Large main compartment with adjustable dividers and padded helmet chamber
- » Wide-mouth lid opening for easy access to all gear compartments
- » Several multi-use lid compartments for apparel and smaller gear
- » SLED (Structural Load Equalizing Deck) System for increased durability and handling in the harshest of conditions
- » Telescoping pull handle
- » 7,500 cu. in., 14.2 lbs., 34 in. x 17 in. x 15 in.

5262-900

TRIBUNE BACKPACK

- » Large main compartment
- » Padded interior laptop compartment fits most 17-in. laptops
- » Padded tablet sleeve
- » Zippered, fleece-lined top valuables pocket
- » Dual side water bottle holders
- » Adjustable shoulder straps with sternum strap
- » 2,450 cu. in., 2 lbs., 19.5 in. x 13.5 in. x 9 in.

5282-904



ATS HELMET BAG

- » Molded EVA/PE protective shells
- » Adjustable padding thickness accommodates multiple helmet types
- » Compressed foam holds helmets still within the case
- » Adjustable goggle or visor storage holds up to four pairs of goggles
- » 2.5 lbs., 16.75 in. x 11.25 in. x 13.5 in.

5262-906



ARCTIC CAT DUFFLE

- » High-tensile strength/lightweight endurance fabrics
- » Large main compartment with zippered side pocket
- » Front-zippered pocket
- » Shoe compartment
- » Zippered, molded eyewear compartment
- » 2,875 cu. in., 2.8 lbs., 25 in. x 11 in. x 11 in.

5282-905



ARCTIC CAT SMALL ROLLER

- » 900-denier poly with eco-friendly PVC backing/900-denier fabric reverse-faced TPE backing
- » ABS molded tub technology withstands drops, bumps and inclement weather
- » Large main compartment with adjustable, easy-clean PVC dividers
- » Reinforced wheel set keeps your bag working longer for you
- » Expandable main gusset for 2.5 in. of extra room
- » Front accessory pocket and toiletry compartment
- » Abrasion-resistant skid guard for increased durability
- » Two-stage telescoping trolley handle
- » Easy access to travel essentials through top or middle panel
- » 2300 cu. in., 21 in. x 13.75 in. x 8 in.
- » 3025 cu. in., 21 in. x 13.75 in. x 10.5 in. (expanded)

5282-901



AXLE BACKPACK

- » Airport checkpoint-friendly laptop compartment fits most 17-in. laptops
- » Dedicated padded pocket for iPad®, tablet or e-reader
- » Top zippered valuables pocket
- » Multiple organization pockets
- » Deluxe aluminum extruded easy-carry top handle
- » Breathable airflow padded back panel and shoulder strap
- » 1,800 cu. in., 19.25 in. x 13 in. x 9.25 in.

5282-903

ARCTIC CAT LARGE ROLLER

- » Large main compartment to store essential gear
- » Lightweight for carrying capacity that meets air travel restrictions
- » Two-stage trolley handle and reinforced wheel set
- » Skid guards provide increased durability and abrasion resistance
- » Durable haul handles for easy carrying
- » Heavy-duty 900-denier fabric with eco-friendly PVC backing
- » 7,300 cu. in., 32 in. x 16.5 in. x 16 in.

5282-902



TEAM ARCTIC ROLLER

- » Extra-large access to main volume
- » Top pocket functions as a wet/dry compartment
- » External zippered pocket with organization for quick access to personal items
- » External boot compartment
- » Fold-out changing mat
- » Two interior stretch mesh hanging pockets
- » OGIO® "skit" system includes large diameter wheels and axles
- » Large skid guards provide increased durability and abrasion resistance
- » Two-stage trolley handle
- » Heavy-duty 900-denier fabric with eco-friendly PVC backing
- » 8,500 cu. in., 31.5 in. x 16 in. x 18 in.

5282-900





2XS	70 – 100 lbs.	L	185 – 210 lbs.
XS	100 – 130 lbs.	XL	210 – 240 lbs.
S	130 – 150 lbs.	2XL	240 – 270 lbs.
M	150 – 185 lbs.	3XL	270 – 300 lbs.



**PROLITE**

- » Premium protection for trail riders and racers
- » Fully compatible with all commercially available neck braces
- » Increased airflow with mesh lining and outer panels
- » Can be worn over or under jackets, jerseys and race shells
- » Meets or exceeds ISR standards

5262-94\* XS-XL

5262-930 YOUTH 50-70 LBS.  
5262-931 YOUTH 70-100 LBS.



**FREESTYLE**

- » Lightweight vest with front zipper access
- » Non-vented for excellent mid-layer insulating performance
- » Closed-cell foam and UHMW plastic laminate armor provide all-around coverage
- » Not recommended for racing

5262-950 2XS

5262-951 XS | 5262-92\* S-3XL



**CROSSOVER**

- » The lightest TekVest® available
- » Heavily vented for maximum cooling
- » Rear panel designed to increase airflow when wearing a backpack
- » Not recommended for racing

5262-91\* XS-3XL

BACK SUPPORT

- » Provides excellent lumbar support without restricting movement
- » Warm, insulating neoprene construction

4292-82\* M-XL



SIZING CHART		
	WAIST	P/N
M	30"-35"	2
L	36"-43"	4
XL	44"-52"	6



JACKETS pg 11





# TUCKER HIBBERT COLLECTION

## HIBBERT RACING

- » Relaxed fit
- » Durable, heavyweight tee
- » 100% cotton

5293-00\* S-2XL



## 68 VERTICAL

- » Relaxed fit
- » 100% ring-spun cotton provides more durability and softer feel

5293-01\* S-2XL



## YOUTH HIBBERT RACING

- » Durable, heavyweight tee
- » 100% cotton

5293-02\* YOUTH S-XL



## YOUTH T-TRAIN FLAT BRIM

- » Structured fit holds cap shape
- » Snapback
- » 80% acrylic, 20% wool

5263-127



## 68 BOLT

- » Relaxed fit
- » Enzyme wash for vintage look
- » Sueded fleece exterior for added comfort
- » Fleece interior for extra warmth and softness
- » 60% cotton, 40% polyester

5293-03\* S-2XL



## TUCKER TEAM ARCTIC JERSEY

- » Polyester is wrinkle resistant for on-the-go convenience
- » Moisture-wicking fabric breathes and keeps you dry
- » 100% polyester

5279-62\* ADULT S-3XL



## YOUTH TUCKER TEAM ARCTIC JERSEY

- » Polyester is wrinkle resistant for on-the-go convenience
- » Moisture-wicking fabric breathes and keeps you dry
- » 100% polyester

5279-65\* YOUTH S-XL



## YOUTH T-TRAIN

- » Non-fleece interior for breathability
- » 100% acrylic

5263-129



## TUCKER TEAM ARCTIC

- » Structured fit holds cap shape
- » Hook-and-loop closure
- » 100% polyester

5273-107



## TEAM 68 KNIT

- » Fleece lined for extra warmth
- » 100% acrylic

5279-566



## 68 TEAM ARCTIC FLAG

- » Metal grommets for easy display
- » 2 ft. x 3 ft.
- » 100% nylon

5279-568

2 FT. X 3 FT.







BLACK CATS SPONSOR

- » Slim fit
- » Original Black Cats athlete graphics
- » Vintage wash creates a soft feel for added comfort
- » 52% cotton, 48% polyester

5293-10\* HEATHERED CHARCOAL  
5293-23\* HEATHERED PURPLE  
S-3XL



Fits closer to body



Fits loosely on body

OIL CAN

- » Relaxed fit
- » Original heritage oil can graphic
- » Vintage wash creates a soft feel for added comfort
- » 52% cotton, 48% polyester

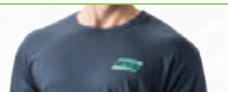
5293-04\* HEATHERED CHARCOAL  
S-2XL



SPARK PLUG

- » Slim fit
- » Vintage wash creates a soft feel for added comfort
- » 100% ring-spun cotton provides more durability and softer feel

5283-59\* INDIGO  
S-2XL



RACE

- » Relaxed fit
- » Moisture-wicking fabric breathes and keeps you dry
- » Brushed polyester for cotton feel
- » 100% polyester

5293-09\* LIME  
S-3XL



GHOST

- » Relaxed fit
- » 100% ring-spun cotton provides more durability and softer feel

5279-29\* BLACK  
5293-11\* LIME  
S-3XL



FLAG

- » Relaxed fit
- » Durable, heavyweight tee
- » 100% cotton

5293-12\* BLACK  
S-5XL



TEAM STRIPE

- » Relaxed fit
- » Durable, heavyweight tee
- » 100% cotton

5293-08\* CHARCOAL  
5293-07\* BLACK  
S-5XL



1962 CAT

- » Slim fit
- » Slight stretch fit for free movement
- » Fabric blend looks great on many body types
- » Durable for long-lasting wear
- » 50% polyester, 37% cotton, 13% rayon

5283-46\* HEATHERED CHARCOAL  
S-2XL



RACE BRAND

- » Relaxed fit
- » Vintage wash creates a soft feel for added comfort
- » 50% cotton, 50% polyester

5283-58\* HEATHERED BROWN  
S-2XL



POLO

- » Relaxed fit
- » Polyester is wrinkle resistant for on-the-go convenience
- » Moisture-wicking fabric breathes and keeps you dry
- » 100% performance polyester

5293-13\* GRAPHITE  
S-3XL



AIRCAT FADE

- » Relaxed fit
- » Moisture-wicking fabric breathes and keeps you dry
- » Brushed polyester for cotton feel
- » 100% polyester

5293-06\* LIME  
5293-05\* BLACK  
S-3XL



BUTTON-UP SHIRT

- » Slim fit
- » Lightweight woven fabric
- » Embroidered merrowed chest patch
- » 55% cotton, 45% polyester

5278-64\* LIGHT GRAY  
S-3XL





**HENLEY**

- » Slim fit
- » Vintage wash creates a soft feel for added comfort
- » 60% cotton, 40% polyester

**5293-14\*** CHAMBRAY  
S-2XL

**RIDE FOR LIFE  
THERMAL  
LONG-SLEEVE**

- » Slim fit
- » Ring-spun combed cotton provides more durability
- » Mini waffle blend for added texture
- » 60% cotton, 40% polyester

**5283-55\*** GRAY  
S-3XL

**ARCTIC CAT  
QUILTED FLANNEL**

- » Relaxed fit
- » Midweight flannel for cooler days
- » Brushed cotton exterior for a cozy feel
- » Polyester lined interior
- » Embroidered merrowed chest patch
- » 55% cotton, 45% polyester

**5278-71\*** CHARCOAL  
S-3XL

**ARCTIC CAT  
LONG-SLEEVE**

- » Relaxed fit
- » Breathable and durable
- » 100% cotton

**5273-43\*** BLACK  
S-2XL

**TEAM LONG-SLEEVE**

- » Relaxed fit
- » Breathable and durable
- » 100% cotton

**5293-17\*** BLACK  
S-2XL

**FLANNEL**

- » Slim fit
- » Lightweight flannel
- » 60% cotton, 40% polyester

**5293-15\*** GRAY/BLACK  
**5293-16\*** WHITE/BLACK  
S-3XL

**CLASSIC CREW**

- » Relaxed fit
- » Features rib cuffs, collar, V-notch and waistband
- » Enzyme wash for vintage look
- » Sueded fleece exterior for added comfort
- » Fleece interior for extra warmth and softness
- » 60% cotton, 40% polyester

**5293-19\*** CHARCOAL  
S-2XL

**ARCTIC CAT  
GHOST**

- » Relaxed fit
- » Fleece interior for extra warmth and softness
- » 50% cotton, 50% polyester

**5279-49\*** BLACK S-3XL  
**5293-29\*** ORANGE S-2XL

**AIRCAT KOOZIE**

- » Relaxed fit
- » Built-in neoprene koozie and bottle opener
- » Fleece interior for extra warmth and softness
- » 100% polyester

**5293-21\*** BLACK  
**5293-22\*** BLAZE ORANGE  
S-2XL

**TEAM ARCTIC  
W/ LACES**

- » Relaxed fit
- » Lace-up front closure
- » Appliqué front chest logo
- » Fleece interior for extra warmth and softness
- » 80% cotton, 20% polyester

**5293-20\*** BLACK  
S-2XL

**TEAM SPORT STRIPE**

- » Relaxed fit
- » Raglan sleeves for greater range of motion
- » Extra-smooth exterior with fleece interior for added comfort
- » 100% polyester for superior moisture management

**5283-12\*** CHARCOAL/LIME  
**5293-26\*** CHARCOAL/PURPLE  
S-3XL

**SURGE HOOD**

- » Slim fit
- » Active lifestyle hoodie
- » Performance body with relaxed, french terry sleeves and hood
- » Waxed drawcords with metal tips
- » 88% polyester, 12% spandex body
- » 60% cotton, 40% polyester sleeves and hood

**5283-53\*** BLACK  
S-2XL





MEN



RACE FULL-ZIP

- » Relaxed fit
- » Fleece interior for extra warmth and softness
- » 50% cotton, 50% polyester

5293-25\* CHARCOAL  
S-4XL



BUILT FOR ADVENTURE FULL-ZIP

- » Slim fit
- » Fleece interior for extra warmth and softness
- » 52% cotton, 48% polyester

5293-24\* HEATHERED CHARCOAL  
S-2XL



CLASSIC AIRCAT

- » Relaxed fit
- » Classic sweatpants with open leg bottom
- » Waist drawcord and side seam pockets
- » Fleece interior for extra warmth and softness
- » 80% cotton, 20% polyester

5293-27\* BLACK | 5293-28\* PURPLE  
S-2XL



SPONSOR PIT

- » Relaxed fit
- » Two-piece, lined collar with sewn-in stays
- » Left pocket has top entry and pencil stall
- » 65% polyester, 35% cotton heathered poplin

5293-31\* HEATHERED CHARCOAL  
S-3XL



CIRCUIT

- » Relaxed fit
- » SNO-ZONE body mapped fabrics for technology where you need it
- » Windproof polyester through arms and torso
- » Moisture-wicking polyester on back and under arms
- » 100% polyester

5293-32\* LIME/GRAY | 5293-30\* BLACK/GRAY  
S-3XL



TEAM ARCTIC RACE

- » Relaxed fit
- » Polyester is wrinkle resistant
- » Moisture-wicking fabric breathes and keeps you dry
- » 100% polyester

5293-33\* LIME/GRAY  
S-3XL

WOMEN'S

5293-34\* PURPLE/GRAY  
S-3XL



JERSEYS





WOMEN



RACE

- » Relaxed fit
- » Moisture-wicking fabric breathes and keeps you dry
- » Brushed polyester for cotton feel
- » 100% polyester

5293-42\* LIME  
S-2XL

MANTRA T

- » Slim fit
- » Ring-spun combed cotton provides more durability and softer feel
- » 100% cotton

5293-36\* HEATHERED CHARCOAL  
S-2XL



LUNA SCRIPT

- » Relaxed fit
- » Breathable and durable
- » 100% cotton

5283-38\* BLACK  
5293-41\* BLACKBERRY  
XS-2XL



TEAM LONG-SLEEVE

- » Relaxed fit
- » Breathable and durable
- » 100% cotton

5293-43\* BLACK  
S-2XL



STENCIL

- » Relaxed fit
- » Breathable and durable
- » 100% cotton

5293-39\* HEATHERED CHARCOAL | 5293-40\* PURPLE  
S-2XL



FLANNEL

- » Slim fit
- » Lightweight flannel
- » Optional roll-up cuffs
- » 60% cotton, 40% polyester

5293-44\* GRAY/BLACK | 5293-45\* WHITE/BLACK  
S-3XL





WOMEN

EXTRA-LONG TRAIL CREW

- » Relaxed fit with longer length
- » Vintage wash creates a soft feel for added comfort
- » Fleece interior for extra warmth and softness
- » 55% cotton, 45% polyester

5293-35\* PURPLE  
S-XL



YETI 1/4-ZIP

- » Relaxed fit
- » Premium polyester sherpa pullover with quarter-zip
- » Fleece exterior and interior for extra warmth and softness
- » 100% polyester sherpa

5283-43\* OATMEAL  
S-2XL



TEAM ARCTIC HOODED TUNIC

- » Relaxed fit with longer length
- » Tri-blend gives soft feel and looks great on many body types
- » Slight stretch fit for free movement
- » Non-fleece interior for warmer weather
- » No drawcord on XS
- » 50% polyester, 37% cotton, 13% rayon

5283-14\* OATMEAL  
XS-2XL



RACE FULL-ZIP

- » Relaxed fit
- » Fleece interior for extra warmth and softness
- » 50% cotton, 50% polyester

5293-46\* CHARCOAL  
S-2XL



TEAM ARCTIC LOUNGE TOP

- » Slim fit
- » Contrast sweater-knit terry features reversed-out fabric sleeves and pouch pocket
- » Also features contrast stitch and drawstrings
- » Non-fleece interior for warmer weather
- » See coordinating 5283-35\* Team Arctic Lounge Pants
- » 65% cotton, 35% polyester

5283-33\* BLACK  
S-2XL



TEAM ARCTIC LOUNGE PANTS

- » Slim fit
- » Contrast sweater-knit terry features reversed-out fabric on waist and contrast drawstrings
- » Non-fleece interior for warmer weather
- » See coordinating 5283-33\* Team Arctic Lounge Top
- » 65% cotton, 35% polyester

5283-35\* BLACK  
S-2XL



LUNA SCRIPT HOODIE

- » Relaxed fit
- » Fleece interior for extra warmth and softness
- » 60% cotton, 40% polyester

5283-49\* BLACKBERRY  
5293-47\* CHARCOAL HEATHER  
S-2XL



COSMIC 1/4-ZIP

- » Relaxed fit
- » Can be worn as performance mid-layer
- » Polyester spun fleece for extra softness and comfort
- » 100% polyester

5293-49\* AQUA | 5293-50\* FUCHSIA  
S-2XL





## YOUTH



## TEAM ARCTIC CAPE

- » Functions both as a cape and a blanket
- » Hook-and-loop closure on collar
- » Fleece interior for extra warmth and softness
- » 80% cotton, 20% polyester

5293-680 BLACK  
ONE SIZE 28" H X 45" W



## TEAM ARCTIC RACE

- » Polyester is wrinkle resistant
- » Moisture-wicking fabric breathes and keeps you dry
- » 100% polyester

5293-51\* LIME/GRAY  
5293-52\* PURPLE/GRAY  
S-XL



## TEAM ARCTIC PANTS

- » Fleece interior for extra warmth and softness
- » 80% cotton, 20% polyester

5293-57\* BLACK  
S-L



## AIRCAT PANTS

- » Slight stretch fit for free movement
- » 92% cotton, 8% spandex

5293-58\* CHARCOAL  
S-L



## TEAM ARCTIC BRAAP

- » Durable, heavyweight tee
- » 100% cotton

5293-59\* BLACK  
5293-60\* ORANGE  
S-L



## RACE LIKE A LEGEND

- » Polyester is wrinkle resistant
- » Moisture-wicking fabric breathes and keeps you dry
- » 100% polyester

5293-55\* BLACK/LIME  
5293-56\* BLACK/PURPLE  
S-L



## ALWAYS FAST NEVER LAST TEE

- » Durable, heavyweight tee
- » 100% cotton

5283-15\* BLACK/LIME  
5283-16\* BLACK/PINK  
S-L



## ALWAYS FAST NEVER LAST HOODIE

- » Fleece interior for extra warmth and softness
- » 50% cotton, 50% polyester

5283-60\* CHARCOAL/LIME  
5283-61\* CHARCOAL/PINK  
S-L



## RACE TEAM

- » Ruched shoulder detail for added style
- » Non-fleece interior for warmer weather
- » 100% cotton

5293-61\* BLACK  
S-L



## RACE FULL-ZIP

- » Fleece interior for extra warmth and softness
- » 50% cotton, 50% polyester

5293-53\* CHARCOAL  
S-XL



## RACE TEAM 1/4-ZIP

- » Extra-smooth exterior with fleece interior for added comfort
- » Contrast zipper
- » 100% polyester for superior moisture management

5283-22\* BLACK/LIME  
5283-23\* BLACK/PINK  
S-L



## TODDLER

**CAT SIGNAL**

- » Glow-in-the-dark artwork
- » Durable, heavyweight tee
- » 100% cotton

**5293-62\*** BLACK | **5293-63\*** GREEN  
2T-4T, 5/6

**SNOWFLAKE**

- » Puff sleeves with ruffle trim
- » Durable, heavyweight tee
- » 100% cotton

**5293-65\*** BLACK  
2T-4T, 5/6

**AIRCAT**

- » Fleece interior for extra warmth and softness
- » 80% cotton, 20% polyester

**5293-66\*** BLACK/LIME  
**5293-67\*** BLACK/PURPLE  
2T-4T, 5/6



## INFANT

**SPIRIT FULL-ZIP HOOD**

- » Fleece interior for extra warmth and softness
- » Elasticized hood
- » 80% cotton, 20% polyester

**5283-25\*** BLACK | **5283-26\*** PINK  
6, 12, 18 MO.

**RACE CHECKLIST**

- » Durable, heavyweight fabric
- » 100% cotton

**5293-748** GRAY  
ONE SIZE

**NEXT STOP ZR120**

- » Durable, heavyweight tee
- » 100% cotton

**5293-69\*** BLACK  
**5293-70\*** ORANGE  
6, 12, 18 MO.

**AIRCAT STRIPE**

- » Durable, heavyweight fabric
- » 100% cotton

**5283-28\*** PINK | **5283-29\*** CHARCOAL  
3, 6, 12, 18 MO.

**AIRCAT PANTS**

- » Fleece interior for extra warmth and softness
- » 80% cotton, 20% polyester

**5283-30\*** BLACK  
6, 12, 18 MO.

**BORN TO BRAAP**

- » Durable, heavyweight fabric
- » 100% cotton

**5293-75\*** ORANGE | **5293-76\*** NAVY  
3, 6, 12, 18, 24 MO.

**PEPLUM**

- » Peplum detail at bottom hem
- » Breathable and durable
- » 100% cotton

**5293-64\*** VANILLA  
2T-4T, 5/6



# CAPS

## BLACK CATS SPONSOR

- » Structured, high crown fit holds cap shape
- » Wide brim
- » Original Black Cats athlete graphics
- » Mixed-media decoration
- » Snapback closure
- » 100% cotton

5293-712 BLACK



## AIRCAT LOGO

- » Structured fit holds cap shape
- » Snapback closure
- » 100% cotton

5283-098 GRAY



## FRACTAL

- » Structured fit holds cap shape
- » Textured, molded TPU logos on front and back
- » Elasticized fitted band
- » 86% polyester, 14% spandex

5293-720 GRAY S/M  
5293-721 GRAY L/XL



## OUTDOOR

- » Structured fit holds cap shape
- » Mesh back with snapback closure
- » 65% cotton, 35% polyester

5283-097 GRAY



## WOOL WIDE BRIM

- » Structured fit holds cap shape
- » Metal Aircat logo
- » Snapback closure
- » 68% acrylic, 30% wool, 2% spandex

5283-100 GRAY



## SNAPBACK

- » Structured, high crown fit holds cap shape
- » Mixed-media decoration
- » Snapback closure
- » 100% cotton

5293-713 BLACK



## AIRCAT BLACK PERFORMANCE

- » Structured fit holds cap shape
- » Molded TPU logo
- » Elasticized fitted band
- » 97% polyester, 3% elastane

5273-054 BLACK S/M  
5273-055 BLACK L/XL



## CAMO

- » Quiet camo fabric
- » Structured fit holds cap shape
- » Snapback closure
- » 100% cotton

5293-714 CAMO



## CADET

- » Unstructured fit for added comfort
- » Black stud accents
- » Hook-and-loop closure
- » 100% cotton

5293-718 BLACK



## COTTON PATCH

- » Structured, high crown fit holds cap shape
- » Suede Aircat patch logo
- » Hook-and-loop closure
- » 100% cotton
- » Wide brim

5293-715 BLACK | 5293-716 RUST | 5293-717 OLIVE





CAPS



RACE

- » Structured fit holds cap shape
- » All-over embroidered graphics
- » Hook-and-loop closure
- » 100% polyester

5293-719 GRAY



TEAM PRIDE

- » Structured fit holds cap shape
- » All-over embroidered graphic
- » Hook-and-loop closure
- » 97% polyester, 3% elastane

5293-726 BLACK/GRAY/LIME/WHITE



FRAYED PATCH

- » Structured fit holds cap shape
- » Distressed patch
- » Mesh back with snapback closure
- » 65% cotton, 35% polyester

5283-104 GRAY



WAXED COTTON

- » Structured fit holds cap shape
- » Waxed cotton front with embroidered patch logo
- » Mesh back with hook-and-loop closure
- » 65% cotton, 35% nylon

5293-749 BROWN



PERFORMANCE

- » Structured, high crown fit holds cap shape
- » Wide brim
- » Molded TPU logos on front and back
- » Elasticized fitted band
- » 97% polyester, 3% elastane

5293-722 BLACK S/M  
5293-723 BLACK L/XL  
5293-724 ORANGE S/M  
5293-725 ORANGE L/XL



TEAM  
ARCTIC



TEAM ARCTIC  
RACE

- » Polyester lined for superior moisture management
- » 100% acrylic

5279-564 GRAY



RAD

- » Non-fleece interior for breathability
- » Double-layer knit for added warmth
- » Can be worn cuffed or uncuffed
- » 100% acrylic

5293-730 PURPLE | 5293-731 BLACK | 5293-732 GRAY

KNIT HATS



FLEECE TEAM ARCTIC

- » Fleece lined for extra warmth
- » 50% polyester, 50% acrylic

5293-740 ORANGE  
5293-738 LIME  
5293-739 GRAY



# KNIT HATS



WINTER WATCHMAN

- » Non-fleece interior for breathability
- » Double-layer knit for added warmth
- » 100% acrylic

5283-111 GRAY



NOISE POM

- » Fleece lined for extra warmth
- » Marled knit adds depth and texture
- » 100% acrylic

5283-114 FOREST | 5283-115 PURPLE | 5283-116 CHARCOAL



CATHEAD PATCH

- » Non-fleece interior for breathability
- » Double-layer knit for added warmth
- » 100% acrylic

5293-733 BLACK



NORDIC KNIT

- » Non-fleece interior for breathability
- » Double-layer knit for added warmth
- » 100% acrylic

5293-734 PURPLE | 5293-735 WHITE



ARCTIC CAT

- » Fleece lined for extra warmth
- » 50% polyester, 50% acrylic

5273-072 GRAY | 5273-074 ORANGE | 5283-112 LIME



YOUTH RACE

- » Polyester lined for superior moisture management
- » 100% acrylic

5279-565 GRAY



YOUTH TEAM ARCTIC DOUBLE POM

- » Non-fleece interior for breathability
- » Double-layer knit for added warmth
- » 100% acrylic

5293-729 BLACK



YOUTH MAGIC KNIT

- » Non-fleece interior for breathability
- » Double-layer knit for added warmth
- » 100% acrylic

5293-727 PURPLE | 5293-728 LIME



THROWBACK

- » Non-fleece interior for breathability
- » Original heritage-inspired knit
- » 100% acrylic

5293-710 LIME | 5293-711 WHITE



# COLLECTIBLES



### ARCTIC CAT SUNGLASSES

- » UVA/UVB protection
- » 100% plastic polycarbonate lens

5283-091 CAMO  
5283-092 MIRROR  
5283-093 ORANGE  
5283-094 SMOKY

### STURDY CAMP MUG

- » Distressed color for vintage look and feel
- » 100% heavy ceramic

5283-084 LIME  
15 OZ.



### ARCTIC CAT MUG

- » Matte exterior finish
- » Glossy interior finish
- » 100% ceramic

5273-025 LIME  
14 OZ.



### AIRCAT TUMBLER

- » 100% stainless steel lined and vacuum insulated to keep drinks hot or cold

5293-746 GUNMETAL | 5293-747 BERRY  
16 OZ.



### AIRCAT FLAG

- » Metal grommets for easy display
- » 100% nylon

5283-083 2 FT. x 3 FT.

5283-082 3 FT. x 5 FT.



### WRAP SHOT GLASS

- » 100% glass

5283-089 CLEAR  
1 OZ.



### ALUMINUM WATER BOTTLE

- » 100% aluminum

5283-086 LIME | 5283-085 GRAY  
24 OZ.



### HERITAGE PINT

- » 100% glass

5283-087 CLEAR  
16 OZ.



### CAN COOLERS

- » Neoprene

5293-741 TEAM ARCTIC | 5293-742 AIRCAT  
5283-095 HERITAGE  
12 OZ.





COLLECTIBLES



COLLECTOR DRUM

- » Limited edition\*
- » 16-gallon oil drum (empty)
- » Screen printed graphic

7639-873



COLLECTOR DRUM SEAT

- » Turns your collector drum into a stool
- » Arctic Cat Genuine Lubricants Logo
- » Fits all Arctic Cat Collector Drums

7639-874



GARAGE STOOL

- » Shop/bar stool
- » Chrome base
- » Features Aircat logo

7639-872



GARAGE MAT

- » 3 ft. x 5 ft. shop mat
- » Non-marking PVC
- » Features Arctic Cat logo

7639-871



GARAGE SIGN

- » 28 in. x 12 in.
- » Edge-lit LED sign
- » Cord with standard plug included

7639-870

AIRCAT KEYCHAIN

- » 100% metal
- 5283-088 BLACK



AIRCAT ORNAMENT

- » Shatter resistant
  - » 100% glass
- 5283-090 SILVER



PET LEASH

- » 1 in. wide, 6 ft. long
  - » 100% polyester
- 5273-042 LIME



PET COLLAR

- » 1 in. wide, adjustable from 12 in. to 20 in. long
  - » 100% polyester
- 5273-043 LIME



LANYARD

- » 100% polyester
- 5293-745 GRAY  
1/2 IN. WIDE



ARCTIC CAT DECAL

- » 100% vinyl

ARCTIC CAT

	BLACK	WHITE	ORANGE	CHROME	LIME
6 IN.	4299-734	4299-738	4299-742	4299-746	4299-750
12 IN.	4299-735	4299-739	4299-743	4299-747	4299-751
24 IN.	4299-736	4299-740	4299-744	4299-748	4299-752
36 IN.	4299-737	4299-741	4299-745	4299-749	4299-753

AIRCAT DECAL

- » 100% vinyl



	LIME	ORANGE	WHITE	BLACK
6 IN.	4299-725	4299-728	4299-731	5293-785
12 IN.	4299-726	4299-729	4299-732	5293-786
24 IN.	4299-727	4299-730	4299-733	5293-787

TEAM  
ARCTIC

TEAM ARCTIC DECAL

- » 100% vinyl

	LIME	BLACK	WHITE	ORANGE	CHROME
6 IN.	5293-770	5293-773	5293-776	5293-779	5293-782
12 IN.	5293-771	5293-774	5293-777	5293-780	5293-783
24 IN.	5293-772	5293-775	5293-778	5293-781	5293-784



# WE MAKE THE WORLD'S BEST SNOWMOBILES. BUT YOU MAKE THEM BETTER.

Now that you have the sled of your dreams, it's time to really make it your own. Check out our exclusive accessories to turn your snowmobile into a natural extension of yourself, for however and wherever you ride.



94	COVERS
98	BAGS
102	TOURING
110	WINDSCREENS
112	CUSTOM
118	ZR® 200
121	PERFORMANCE
124	MOUNTAIN
132	UTILITY
134	TRACKS
136	TRACTION & CONTROL
140	GENERAL MAINTENANCE
141	BATTERY CHARGERS
142	BELTS
143	OIL & CARE

ABBREVIATION KEY	
BC	..... BEARCAT®
CC	..... CROSS COUNTRY™
CF	..... CROSSFIRE™
CT	..... CROSSTOUR
CTK	..... CROSSTREK™
HC	..... HIGH COUNTRY™
KC	..... KING CAT
M HC	..... M HARD CORE
MC	..... MOUNTAIN CAT®
MC A1	..... MOUNTAIN CAT ALPHA ONE
NOR	..... NORSEMAN™
NOR X	..... NORSEMAN X
PTA	..... PANTERA®
SP	..... SNO PRO®
TC	..... THUNDERCAT®





# COVERS

## ARCTIC CAT CANVAS

- » Excellent longevity from specially treated canvas
- » Adjustable windshield strap provides a custom windshield/mirror fit (not included on 2-Up Touring models)
- » Four cinch-down side straps
- » Adjustable hook-and-loop front fasteners
- » Easy-access, zippered gas cap panel
- » Trailerable
- » Fits low, mid and high windshields and mirrors

**8639-001** '14-'19 ZR; '17-'19 TC, XF CC; '14-'15 XF; '12-'13 F 129-IN.-137-IN.  
**8639-002** '14-'19 ZR; '17-'19 TC; '14-'15 XF; '13-'15 XF CT; '12-'13 F 129-IN.-141-IN. W/ 2-UP SEAT  
**8639-003** '12-'19 M; '17-'19 KC; '19 M HC, MC A1; '17-'19 XF HC 141-IN.-165-IN.  
**8639-004** '15-'19 LYNX; '12-'14 F5, F570; '07-'11 F; '09-'11 Z1, Z1 TURBO

**8639-005** '15-'19 LYNX LT; '15-'18 BC LT 2000; '08-'14 T570, TZ1; '09-'14 BC 570  
**8639-006** '15-'19 PTA 7000; '18-'19 PTA 6000; '16-'19 PTA 3000  
**8639-007** '16-'19 PTA 7000 XT LTD  
**8639-008** '18-'19 NOR; '19 NOR X; '16-'17 BC 3000 LT 146-IN.-154-IN.  
**8639-009** '18-'19 BC XT  
**8639-010** '16-'19 BC 7000 XT

**8639-011** '18-'19 ZR 200  
**8639-012** '18-'19 ZR 120



## ARCTIC CAT POLYESTER

- » Provides excellent outdoor storage
- » Fade-resistant, UV-protected polyester fabric
- » Water-repellent coating
- » Spandex panel allows for low to high windshield/mirror options
- » Adjustable hook-and-loop front fasteners
- » Easy-access, zippered gas cap panel
- » Four cinch-down side straps
- » Trailerable

**8639-013** '14-'19 ZR; '17-'19 TC, XF CC; '14-'15 XF; '12-'13 F 129-IN.-137-IN.  
**8639-014** '12-'19 M; '17-'19 KC; '19 M HC, MC A1; '17-'19 XF HC 141-IN.-165-IN.  
**8639-015** '15-'19 PTA 7000; '18-'19 PTA 6000; '16-'19 PTA 3000  
**8639-016** '16-'19 BC 7000 XT



## PREMIUM LIMITED COVERS

- » The ultimate outdoor storage cover
- » Fade-resistant, UV-protected, long-lasting premium Surlast™ fabric
- » Water-repellent coating
- » Adjustable windshield strap provides a custom windshield/mirror fit
- » Adjustable hook-and-loop front fasteners
- » Easy-access, zippered gas cap panel
- » Four cinch-down side straps
- » Trailerable

## ZR LTD

- » Fits low, mid and high windshields and mirrors

**8639-017 BLACK** | **8639-018 PURPLE**  
'14-'19 ZR; '17-'19 TC; '14-'15 XF; '12-'13 F 129-IN.-137-IN.



## ZR RR

- » Fits low and mid windshields

**8639-019** '14-'19 ZR; '17-'19 TC; '14-'15 XF; '12-'13 F 129-IN.-137-IN.



## THUNDERCAT®

- » Fits low and mid windshields

**8639-020** '17-'19 TC 129-IN.-137-IN.



## XF LTD

- » Fits low and mid windshields

**8639-021** '17-'19 XF CC 137-IN.  
**8639-022** '16-'19 XF HC 141-IN.-153-IN.





# COVERS

## PREMIUM LIMITED COVERS

- » The ultimate outdoor storage cover
- » Fade-resistant, UV-protected, long-lasting premium Surlast fabric
- » Water-repellent coating
- » Adjustable windshield strap provides a custom windshield/mirror fit
- » Adjustable hook-and-loop front fasteners
- » Easy-access, zippered gas cap panel
- » Four cinch-down side straps
- » Trailerable

## HARD CORE

- » Fits low and mid windshields
- 8639-023** '12-'19 M; '17-'19 KC; '19 M HC, MC A1; 153-IN.-165-IN.



## MOUNTAIN CAT

- » Fits low and mid windshields
- 8639-024** BLACK | **8639-025** PURPLE  
'12-'19 M; '17-'19 KC; '19 M HC, MC A1; 153-IN.-165-IN.



## MOUNTAIN CAT ALPHA ONE

- » Fits low and mid windshields
- 8639-105** '12-'19 M; '17-'19 KC; '19 M HC, MC A1; 153-IN.-165-IN.



## KING CAT

- » Fits low and mid windshields
- 8639-026** '12-'19 M; '17-'19 KC; '19 M HC, MC A1; 153-IN.-165-IN.



## RACE TRACK COVER

- » A lightweight cover that protects from ski tip to rear bumper
- » For use in the garage or at the track
- » Elastic bottom cord and hook-and-loop running board strap
- » Not recommended for trailering

**8639-027** '14-'19 ZR; '17-'19 TC; '14-'15 XF; '12-'13 F 129-IN.-137-IN.  
**8639-028** '12-'19 M; '17-'19 KC; '19 M HC, MC A1; '17-'19 XF HC 141-IN.-165-IN.



## CUSTOM COVERS

- » Custom-fit options for non-current sled models
- » Excellent longevity from specially treated canvas
- » Supersnug cinch-down straps
- » Adjustable hook-and-loop front fasteners
- » Easy-access, zippered gas cap panel
- » Trailerable

**5639-017** '03-'06 FC, SC 128-IN.  
**5639-018** '99-'06 CO, EXT, T660, TC, Z, ZL, ZR, ZRT 121-IN.  
**6639-044** '06-'11 CF; '06-'07 M 141-IN.  
**5639-241** '05-'11 M 153-IN.-162-IN.  
**5639-286** '15-'19 LYNX; '12-'14 F5, F570; '07-'11 F; '09-'11 Z1, Z1 TURBO W/ 2-UP SEAT  
**5639-019** '02-'04 MC; '04-'06 KC  
**5639-020** '00-'06 PA, PTA, T660, 2-UP TOURING



## SHOP COVER

- » Lightweight nylon cover is ideal for storage or overnight trips
- » Secure-fitting elastic bottom cord
- » Not recommended for trailering

**7639-249** '14-'19 ZR; '17-'19 TC; '14-'15 XF; '12-'13 F 129-IN.-137-IN.  
**7639-250** '12-'19 M 153-IN.-165-IN.



## UNDERCOVER

- » Use with Arctic Cat canvas, polyester and premium covers

**6639-996** '14-'19 ZR; '17-'19 TC, KC; '12-'19 M, XF; '12-'13 F





BAGS

TRAIL PACK

- » Durable and stylish bags provide easy-access storage for the long-distance touring rider
- » Semi-rigid construction
- » Cam-lock attachment with quarter-turn lock system eliminates straps and hooks
- » Available in two sizes, Mid fits 129-in. and 137-in. models, Large fits 137-in. models
- » Mid 27-liter, Large 33-liter capacity

**MID (17 in. x 15 in. x 9 in.)**  
**8639-029** '14-'19 ZR; '17-'19 TC; '13 F 129-IN.-137-IN.

**LARGE (20 in. x 15 in. x 9 in.)**  
**8639-030** '14-'19 ZR; '17-'19 TC 137-IN.



WINDSHIELD BAG

- » Offers out-of-the-way storage for smaller items
- » Fits neatly behind windshield

**7639-691** '18-'19 6/8000; '14-'19 7000; '17-'19 3000  
MODELS W/ MOLDED WINDSHIELD MOUNTS  
**7639-289** '14-'17 4/5/6/8000; '14-'16 9000; '12-'13 F  
MODELS W/ ALUMINUM WINDSHIELD MOUNTS  
**7639-832** '18-'19 BC XT

**6639-888** '16-'19 BC 7000 XT, PTA 7000 XT LTD

**4639-714** '15-'19 LYNX, LYNX LT; '15-'18 BC LT 2000; '08-'14 T570, TZ1;  
'09-'15 BC; '09-'11 F, Z1 (NON-TURBO)



TUNNEL PACK

- » Large capacity bags provide convenient, economical storage
- » Strap and hook attachment fits most flat-tunnel models
- » Available in two sizes, Mid fits 129-in. and 137-in. models, Large fits 137-in. models
- » Mid 20-liter, Large 30-liter capacity

**MID (15 in. x 15 in. x 6 in.)**  
**8639-033** '14-'19 ZR; '17-'19 TC; '13 F 129-IN.-137-IN.

**LARGE (18 in. x 15 in. x 8 in.)**  
**8639-034** '14-'19 ZR; '17-'19 TC 137-IN.



MOUNTAIN PACK

- » These rugged, low-profile bags offer easy-access storage and provide quick access to your shovel
- » Semi-rigid construction
- » Cam-lock attachment with quarter-turn lock system eliminates straps and hooks
- » Accepts all BCA shovels shown on page 127 (shovel not included)
- » Available in two sizes for 141-in.-165-in. models
- » Mid 17-liter, Large 28-liter capacity

**NOTE:** When using an avalanche airbag, avalanche experts recommend carrying a shovel in the backpack and a second shovel on the sled.

**MID (19 in. x 15 in. x 4 in.)**  
**8639-031** '12-'19 M; '17-'19 MC, KC; '19 M HC, MC A1;  
'16-'19 XF HC 141-IN.-165-IN.

**LARGE (26 in. x 15 in. x 6 in.)**  
**8639-032** '12-'19 M; '17-'19 MC, KC; '19 M HC, MC A1;  
'16-'19 XF HC 141-IN.-165-IN.



TUNNEL GEAR BAG

- » Large storage capacity
- » Built-in cinch straps keep cargo secure
- » Installs easily with quick-fasten straps

**6639-704** '15-'19 LYNX; '12-'14 F5, F570;  
'10-'11 F, Z1, Z1 TURBO, Z1 TURBO EXT; '11 F8 EXT



HARD SADDLEBAGS

- » Premium injection-molded saddlebags provide clean, lockable storage
- » Features large-capacity storage and quick-release attachment
- » Includes right- and left-side bags
- » XF CT and ZR models require 8-pocket Hitch Kit or SpeedRack® Base and Saddlebag Carrier
- » BC XT requires Tunnel Flares and Rear Rack

**7639-568** '15-'19 PTA; '16-'19 BC 7000 XT, ZR 137-IN.; '16-'18 XF CT 6/7/9000



BAGS



7639-294



8639-076



7639-296

HANDLEBAR BAG

- » Easy-access storage
- » Internal pocket for Bag Heater

**7639-294** '07-'19 MODELS W/ TRAIL HANDLEBAR  
**7639-296** '15-'19 PTA 7000; '16-'19 PTA 3000; '18-'19 PTA 6000  
**7639-831** '18-'19 BC XT

**8639-076** '05-'19 MODELS W/ MOUNTAIN HANDLEBAR

**6639-887** '16-'19 BC 7000 XT, PTA 7000 XT LTD



CUSTOM HANDLEBAR BAG

- » Lightweight storage for any sled
- 6639-716** UNIVERSAL



BAG HEATER KIT

- » 5-watt heating element
- » Includes harness to accessory plug
- » Second outlet for heated shield

**5639-837** FITS HANDLEBAR BAGS 8639-076, 7639-831, 7639-296, 7639-294, 6639-887



GOGGLE HOLDER

- » Engine heat dries goggles, masks or gloves while you ride
- NOTE:** Do not leave goggles in holder for extended periods; heat may damage goggles.

**7639-591** '18-'19 ZR, M, MC, XF CC, XF HC, NOR, PTA 6/8000; '17-'19 ZR, KC, TC, XF CC, XF HC 9000; '19 NOR X 6/8000; '18 XF CT, XF CTK 6/8000; '17-'18 XF CTK 9000  
**5639-767** '14-'17 ZR, M, XF 4/5/6/8000; '18-'19 NOR 3000; '14-'19 ZR 3/7000; '14-'16 ZR, M, XF 9000; '17-'18 XF CT, XF CTK 7000; '15-'19 PTA 3/7000; '16-'17 BC 3000 LT; '12-'13 F



TANK BAG

- » Convenient, easy-access storage
- » Easily removes for refueling
- » Large map window

**7639-287** '14-'19 ZR; '15-'19 PTA; '16-'18 XF CT, XF CTK; '18-'19 NOR; '16-'17 BC 3000 LT; '12-'13 F



6639-886



7639-830

CARGO BAG

- » Large main storage area
- » Quick-attach mounting straps

**7639-764** '18-'19 NOR 3/6000; '19 NOR X 6/8000; '16-'17 BC LT 3000 146-IN.-154-IN.

**7639-830** '18-'19 BC XT

**6639-886** '16-'19 BC 7000 XT



GEAR BAG

- » Mid-capacity storage
- » Three interior pockets
- » Quick-attach mounting straps
- » 18 in. L x 16 in. W x 10 in. H, 50-liter capacity

**6639-885** '16-'19 BC 7000 XT



CARGO BOX

- » Durable molded polyethylene construction
- » Lid hinges forward for easy access
- » Adjustable hinges hold lid open
- » Threaded inserts and screws attach box to tunnel
- » 22 in. L x 21 in. W x 18 in. H, 64-liter capacity

**6639-878** '16-'19 BC 7000 XT



TOURING



PRO BUMPER

- » Aluminum bumper provides added protection
- » Durable powder-coat finish
- » 4.5 lbs.

**7639-782** BLACK | **7639-783** TEAM ARCTIC GREEN  
**7639-784** ORANGE | **7639-786** MED GREEN | **8639-036** GRAY  
‘18-‘19 ZR, M, XF CC, XF HC, NOR, PTA 6/8000; ‘19 ZR, NOR, PTA 3/7000, NOR X 6/8000; ‘18 XF CT, XF CTK 6/8000; ‘17 ZR RS; ‘17-‘18 ZR R XC 6000 (GEN 2)  
**6639-724** BLACK | **6639-725** TEAM ARCTIC GREEN | **6639-726** ORANGE  
‘18 ZR, XF CT, XF CTK, NOR 3/7000; ‘14-‘17 ZR, M, XF 4/5/6/7/8000; ‘14-‘16 ZR, M, XF 9000; ‘12-‘13 F (GEN 1)

**7639-301** BLACK | **7639-305** MED GREEN  
‘17-‘19 ZR, KC, TC, XF HC 9000; ‘18-‘19 XF CC 9000; ‘17-‘18 XF CTK 9000; ‘18 XF CT 9000 (GEN 2 9000)



PRO RECEIVER BUMPER

- » Rugged aluminum bumper adds protection
- » Receiver provides a mounting point for standard 1-1/4-in. attachments (not included)
- » Durable powder-coat finish
- » Maximum rating 50 lbs. for vertical load, 100 lbs. for drawbar (pull)
- » 6.5 lbs.

**NOTE:** Accessories attached to the front receiver must be mounted so that they will not interfere with headlight visibility.

**7639-959** BLACK  
‘18-‘19 ZR, M, XF CC, XF HC, NOR, PTA 6/8000; ‘19 ZR, NOR, PTA 3/7000, NOR X 6/8000; ‘18 XF CT, XF CTK 6/8000; ‘17 ZR RS; ‘17-‘18 ZR R XC 6000 (GEN 2)



PRO MTN BUMPER

- » Lightweight aluminum bumper features an aggressive design
- » Open design minimizes snow buildup
- » Durable powder-coat finish
- » 3.0 lbs.

**7639-788** BLACK | **7639-789** TEAM ARCTIC GREEN | **7639-790** ORANGE  
**7639-792** MED GREEN | **8639-037** GRAY | **8639-038** PURPLE  
‘18-‘19 ZR, M, XF CC, XF HC, NOR, PTA 6/8000; ‘19 ZR, NOR, PTA 3/7000, NOR X 6/8000; ‘18 XF CT, XF CTK 6/8000; ‘17 ZR RS; ‘17-‘18 ZR R XC 6000 (GEN 2)  
**7639-308** BLACK | **7639-309** TEAM ARCTIC GREEN | **7639-310** ORANGE  
‘18 ZR, XF CT, XF CTK, NOR 3/7000; ‘14-‘17 ZR, M, XF 4/5/6/7/8000; ‘14-‘16 ZR, M, XF 9000; ‘12-‘13 F (GEN 1)



PROCLIMB™ BUMPER

- » Large-diameter top tube provides added protection
- » Open-tube design lets snow drop through
- » Durable powder-coat finish
- » 3.5 lbs.

**7639-794** BLACK | **7639-795** TEAM ARCTIC GREEN | **7639-796** ORANGE  
**7639-798** MED GREEN | **8639-039** GRAY | **8639-040** PURPLE  
‘18-‘19 ZR, M, XF CC, XF HC, NOR, PTA 6/8000; ‘19 ZR, NOR, PTA 3/7000, NOR X 6/8000; ‘18 XF CT, XF CTK 6/8000; ‘17 ZR RS; ‘17-‘18 ZR R XC 6000 (GEN 2)  
**6639-286** BLACK | **6639-287** TEAM ARCTIC GREEN | **6639-288** ORANGE  
‘18 ZR, XF CT, XF CTK, NOR 3/7000; ‘14-‘17 ZR, M, XF 4/5/6/7/8000; ‘14-‘16 ZR, M, XF 9000; ‘12-‘13 F (GEN 1)

**7639-800** BLACK | **7639-804** MED GREEN  
‘17-‘19 ZR, KC, TC, XF HC 9000; ‘18-‘19 XF CC 9000; ‘17-‘18 XF CTK 9000; ‘18 XF CT 9000 (GEN 2 9000)



PROCROSS™ REAR BUMPER

- » Aluminum bumper features stylish side plates and a tubular grab handle
- » Durable powder-coat finish

**7639-316** BLACK | **7639-320** MED GREEN  
‘14-‘19 ZR; ‘17-‘19 TC; ‘13 F 129-IN.  
**7639-323** BLACK | **7639-327** MED GREEN  
‘18-‘19 ZR, XF CC 6/8000; ‘17-‘19 ZR, TC, XF CC 9000; ‘19 ZR 7000; ‘17-‘18 XF CTK 9000; ‘18 XF CTK 6/8000 137-IN. (GEN 2)  
**7639-330** BLACK | **7639-334** MED GREEN  
‘16-‘19 M, XF HC; ‘16-‘18 ZR, XF CTK 7000; ‘16-‘17 ZR, XF CTK 6/8000; ‘17 ZR 5000, XF CC 6/8000; ‘16 ZR 9000; ‘14-‘15 XF; ‘13-‘15 XF 137-IN.-141-IN.





# TOURING

### SPEEDRACK II SYSTEM

The simplest, fastest and strongest accessory system in the industry. Accessories can be added or removed in seconds.

Attach in two easy steps:

- 1. Position the accessory
- 2. Insert SpeedLock™ and press down thumb lock



### SPEEDRACK BASE KIT

- » Mounting system provides the “rack” for attaching SpeedRack accessories
- » Includes front and rear SpeedRack base mounts and one SpeedLock

**7639-342** '14-'19 ZR; '17-'19 TC; '12-'19 M, XF HC; '13-'17 XF; '13 F W/ FLAT TUNNEL



### SPEEDRACK GEAR RACK

- » Lightweight aluminum rack attaches to SpeedRack Base Kit
- » Fits 2.5-gallon fuel can
- » Required SpeedLock is included in SpeedRack Base Kit
- » 11 in. x 10 in.

**7639-344** WORKS WITH SPEEDRACK BASE KIT



### SPEEDRACK CARGO RACK

- » Tubular steel rack provides added storage capacity
- » Attaches to SpeedRack Base Kit
- » Required SpeedLock is included in SpeedRack Base Kit
- » 13 in. x 15 in.

**7639-350** WORKS WITH SPEEDRACK BASE KIT



### SPEEDRACK GEAR BAG

- » Compact storage bag attaches to SpeedRack Base
- » Required SpeedLock is included in SpeedRack Base Kit
- » 12-liter capacity

**7639-352** WORKS WITH SPEEDRACK BASE KIT

### SPEEDLOCK

- » Drop-in system quickly attaches with easy-to-use thumb locks
- » Durable cast-aluminum components with one-click unlocking for fast removal

**2436-501**



### SPEEDLOCK COVER

- » Slip-on rubber cover retains mechanical mobility of SpeedLock in cold weather

**2436-540**



### SPEEDRACK CARGO BOX

- » Durable molded polyethylene construction
- » Removable lid with foam seal
- » Built-in cinch strap keeps cargo secure
- » Attaches to SpeedRack Base
- » Required SpeedLock is included in SpeedRack Base Kit
- » Accepts Saddlebag Carrier
- » 20 in. L x 12 in. W x 10 in. H, 25-liter capacity

**7639-351** WORKS WITH SPEEDRACK BASE KIT





TOURING



SEMI-RIGID MUFFS

- » Keep your hands warm and safe from debris
- » Reinforced design holds its shape
- » Easy-attach hook-and-loop straps with an elastic grip strap

7639-112 UNIVERSAL



XC MUFFS

- » Water- and wind-resistant nylon outer with a quilted lining
- » Rolls up on handlebar when not in use
- » Easy-attach hook-and-loop straps with an elastic grip strap

7639-995 UNIVERSAL



SPORT MUFFS

- » Easy-on/easy-off
- » Warmth without the weight
- » Quick hook-and-loop attachment mounts directly to handlebars
- » Interior pocket slides over hand guards

7639-445 '14-'19 ZR; '17-'19 TC; '12-'19 M, XF; '12-'13 F



PASSENGER MUFFS

- » Water- and wind-resistant nylon outer
- » Easy-attach hook-and-loop straps
- » Mounts with or without standard wind deflectors

7639-361 '15-'19 PTA, LYNX LT; '15-'18 BC LT 2000; '08-'14 T570, TZ1; '09-'14 BC 570

2-UP SEAT KIT

- » Converts your sled to carry a passenger
- » Includes passenger seat with backrest, handholds and footrests
- » Accepts Cargo Racks and Tunnel Bags
- » 7639-358, 7639-359 requires 8-pocket Hitch Kit (see page 108)
- » 7639-826, 6639-985 do not require a hitch kit
- » 6639-985 includes heated seat and hand warmers

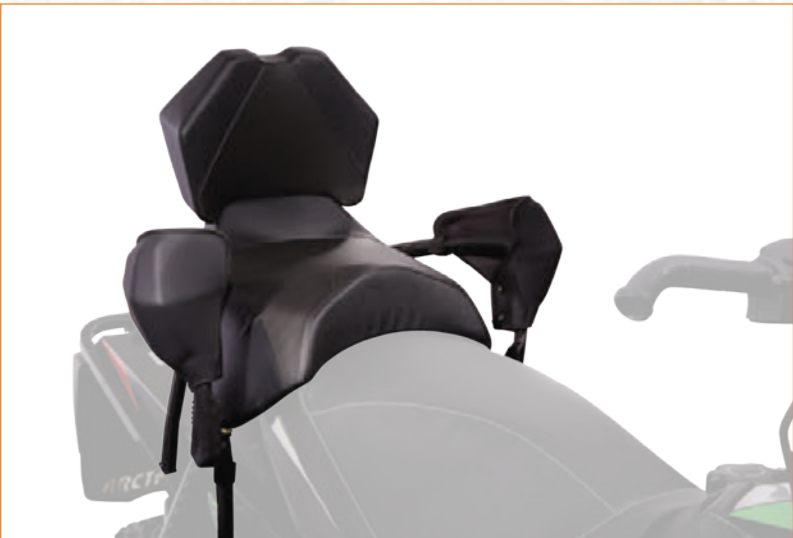
**NOTE:** '12-'19 XF HC, XF CC models with mountain-style seat require a ZR Trail Seat.

7639-358 '14-'18 ZR 6/8000; '16-'18 XF CTK 6/8000; '12-'15 XF, XF CT 6/8000; '12-'13 F

7639-359 '14-'19 ZR 7/9000; '17-'19 ZR 3000; '17-'19 TC 9000; '17-'18 XF CTK 9000; '16-'18 XF CTK 7000; '14-'15 XF, XF CC, XF CT 7000

7639-826 '18-'19 NOR 3/6000; '19 NOR X 6/8000; '16-'17 BC LT 3000

6639-985 '16-'18 XF CT 7000; '18 XF CT 6/9000



HAND WARMER KIT

- » Adds passenger warmers for 2-Up Seat
- » Includes wiring harness with disconnect coupler and passenger control switch

6639-281 FITS 2-UP SEAT KITS 7639-358, 7639-359, 7639-826



FITS ALL MODEL VARIATIONS AND ENGINE PACKAGES UNLESS A SPECIFIC MODEL OR ENGINE DESIGNATION IS LISTED. FOR MODEL ABBREVIATION KEY, SEE PAGE 93.



# TOURING

## HITCH KITS

- » Strong, secure steel bumper available with a pivot or pintle hitch
  - » 129-in.-153-in. kits include eight mounting pockets for 2-Up seat
  - » Maximum tow rating 20 lbs. for vertical load, 150 lbs. for drawbar (pull)
- '14-'19 ZR; '17-'19 TC; '13 F 129-IN.  
**6639-990** PIVOT  
**6639-910** PINTLE
- '18-'19 ZR, XF CC 6/8000; '17-'19 ZR, TC, XF CC 9000; '19 ZR 7000; '17-'18 XF CTK 9000; '18 XF CTK 6/8000 137-IN. (GEN 2)  
**7639-356** PIVOT  
**7639-357** PINTLE
- '16-'19 M, XF HC; '16-'18 ZR, XF CTK 7000; '16-'17 ZR, XF CTK 6/8000; '17 ZR 5000, XF CC 6/8000; '16 ZR 9000; '14-'15 XF; '13-'15 XF 137-IN.-141-IN.  
**6639-991** PIVOT  
**6639-911** PINTLE
- '12-'19 M; '19 M HC; '17-'19 XF HC 153-IN.; '19 MC A1 154-IN.; '13-'15 XF HC 141-IN.  
**6639-992** PIVOT  
**6639-912** PINTLE
- '12-'19 M; '17-'19 KC; '19 M HC 162-IN.; '19 MC A1 165-IN.  
**6639-993** PIVOT  
**6639-913** PINTLE
- '15-'19 LYNX; '12-'14 F5, F570; '10-'11 F, Z1 128-IN.  
**5639-318** PIVOT
- '15-'19 LYNX LT; '15-'18 BC LT 2000; '08-'14 T570, TZ1; '09-'14 BC 570  
**4639-723** PIVOT  
**4639-907** PINTLE
- '15-'19 PTA 7000; '16-'19 PTA 3000; '18-'19 PTA 6000; '16-'18 XF CT '16-'18 XF CT 6/7/9000  
**6639-739** PIVOT  
**6639-740** PINTLE
- '16-'19 BC 7000 XT, PTA 7000 XT LTD (DOES NOT INCLUDE HITCH TUBE)  
**7639-030** PINTLE



## TOW HITCH

- » Quick and easy installation
- » Mounts to standard bumper
- » For light-duty use

**6639-541** '14-'19 ZR; '17-'19 TC; '12-'19 M, XF; '12-'13 F

**5639-324** '15-'19 LYNX; '12-'14 F5, F570; '09-'11 CF, CFR, M; '10-'11 F, Z1

## LED HEADLIGHT

- » Delivers significantly greater performance than a halogen system
- » When the high beam is activated, the low beam also stays on to deliver a light pattern with great range and width
- » Features stylish accent lighting
- » Includes headlight assembly and wiring harness
- » Fits '18-'19 Gen2 models with halogen headlight

**7639-989** '19 ZR, M, XF HC, NOR, NOR X 6/8000  
**7639-990** '19 ZR 3/7000, NOR, PTA 3000  
**0709-096** '18 ZR, M, XF CT, XF CTK, XF HC, NOR, PTA 6/8000



## COOLANT HEATER

- » Improves startup in extreme weather

**7639-584** '16-'19 BC 7000 XT  
**7639-509** '18-'19 NOR 3000; '16-'19 PTA 3000; '17-'19 ZR 3000; '16-'17 BC LT 3000



## HEATED SHIELD OUTLET

- » Dash-mounted outlet for heated shield

**7639-041** '14-'19 ZR; '18-'19 NOR; '12-'19 M, XF; '12-'13 F



## HEATED SHIELD ADAPTER

- » Quickly adapts a heated shield cord to the sled's accessory outlet

**5639-645**



## TETHER SWITCH

- » Stops engine in the event you fall off your sled
- » Attaches to your jacket D-ring

**8639-074** '18 ZR, M, XF, NOR 6/8000; '17 ZR 6000 RS  
**8639-075** '18 ZR, M, XF 9000

**5639-859** '14-'17 6/8000; '12-'13 800  
**5639-860** '14-'17 5/9000; '14-'18 7000; '16-'18 3000; '12-'13 1100, 1100T

## HEATED SEAT KITS

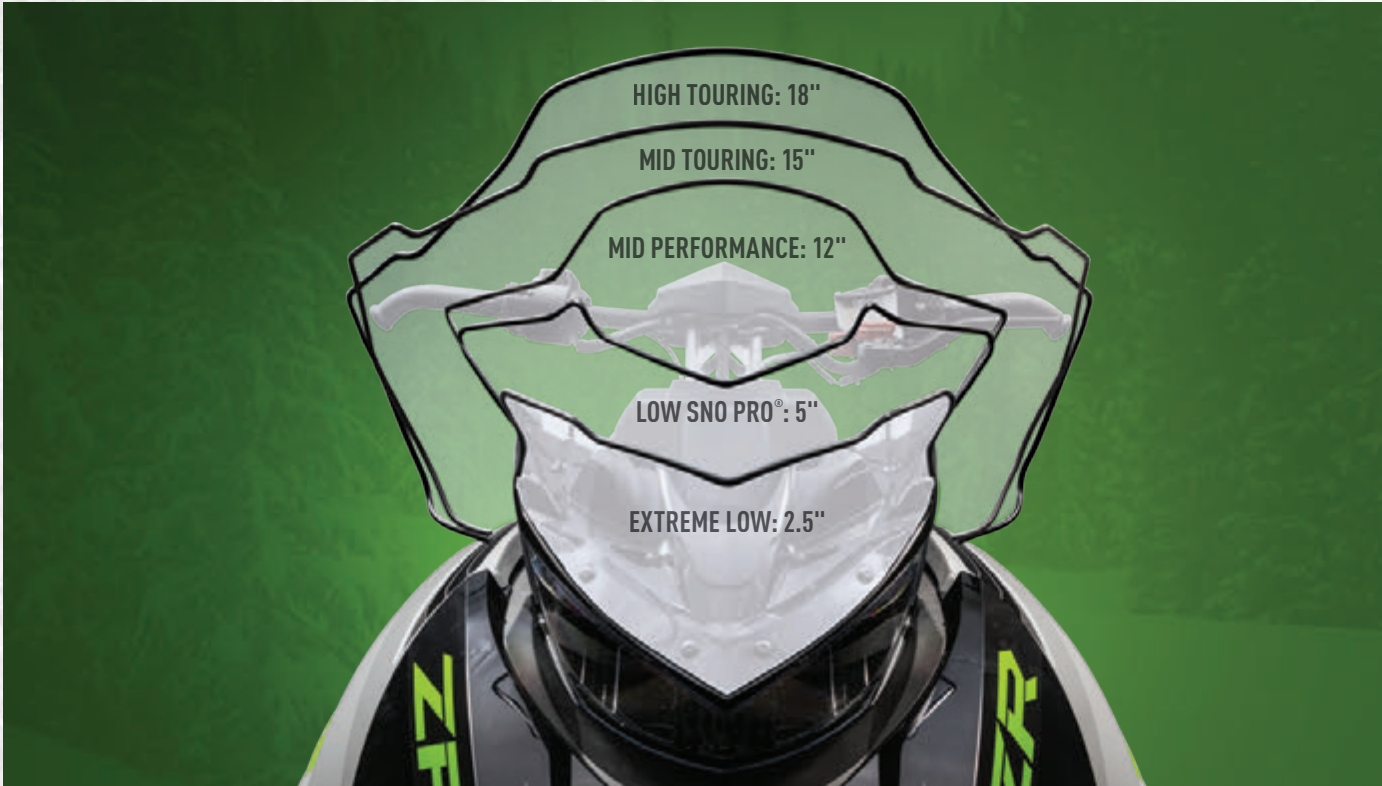
- » Provides rider warmth and comfort
- » Includes heating element and wiring
- » 6/8000 models require LED headlight

**7639-965** '18-'19 ZR 3/7000, ZR 9000 RR, XF HC 9000  
**7639-968** '18-'19 ZR LTD, XF CC LTD, XF HC LTD 6/8000, ZR R XC 6000 MODELS W/ LED HEADLIGHT

**7639-966** '18-'19 PTA 3000; '18 PTA 7000 (DRIVER & PASSENGER)







**EXTREME LOW** 2.5-IN. HIGH / 16-IN. WIDE

» Accepts hand guards

**7639-692** BLACK | **7639-693** GREEN | **7639-694** ORANGE  
'18-'19 6/8000; '14-'19 7000;  
'17-'19 3000 MODELS W/ MOLDED WINDSHIELD MOUNTS



**LOW SNO PRO®** 5-IN. HIGH / 20-IN. WIDE

» Accepts hand guards

**7639-696** BLACK | **7639-697** GREEN | **7639-698** ORANGE  
'18-'19 6/8000; '14-'19 7000;  
'17-'19 3000 MODELS W/ MOLDED WINDSHIELD MOUNTS



**MID PERFORMANCE** 12-IN. HIGH / 21-IN. WIDE

» Accepts hand guards

**7639-700** BLACK | **7639-701** GREEN | **7639-702** ORANGE  
'18-'19 6/8000; '14-'19 7000;  
'17-'19 3000 MODELS W/ MOLDED WINDSHIELD MOUNTS



**MID TOURING** 15-IN. HIGH / 27-IN. WIDE

» Accepts windshield mirrors 6639-630, 6639-770

**7639-688** BLACK | **8639-077** MEDIUM GREEN  
'18-'19 6/8000; '14-'19 7000;  
'17-'19 3000 MODELS W/ MOLDED WINDSHIELD MOUNTS

**7639-368** BLACK | **7639-369** GREEN  
'14-'17 4/5/6/8000; '14-'16 9000;  
'12-'13 F MODELS W/ ALUMINUM WINDSHIELD MOUNTS



**HIGH TOURING** 18-IN. HIGH / 28-IN. WIDE

» Accepts windshield mirrors 6639-630, 6639-770

**7639-383** BLACK  
'18-'19 6/8000; '14-'19 7000;  
'17-'19 3000 MODELS W/ MOLDED WINDSHIELD MOUNTS

**7639-371** BLACK  
'14-'17 4/5/6/8000; '14-'16 9000;  
'12-'13 F MODELS W/ ALUMINUM WINDSHIELD MOUNTS







**TEAM ARCTIC HAND GUARDS**

- » Lightweight, injection-molded guards add warmth and protection
- » Models with mountain handlebars require trimming
- » Sold in pairs, includes nylon mounting arms
- » See windscreen applications on pages 110-111 for compatibility

**8639-041** BLACK | **8639-042** MED GREEN  
**8639-043** ORANGE | **8639-044** WHITE  
'14-'19 ZR; '17-'19 TC; '12-'19 M, XF CC, XF HC; '12-'13 F



**PROCROSS HAND GUARDS**

- » Stylish, injection-molded guards add style and protection
- » Models with mountain handlebars require trimming
- » Sold in pairs, includes mounting arms
- » See windscreen applications on pages 110-111 for compatibility

**7639-388** BLACK | **7639-389** TA GREEN  
**7639-390** ORANGE | **7639-391** WHITE  
'14-'19 ZR; '17-'19 TC; '12-'19 M, XF CC, XF HC; '12-'13 F



**PROCROSS HAND GUARDS - LIGHTED**

- » Stylish, injection-molded guards with LED accent lighting
- » Lighted guards include LED caps and wiring
- » Models with mountain handlebars require trimming
- » Sold in pairs, includes mounting arms
- » See windscreen applications on pages 110-111 for compatibility

**7639-770** BLACK | **7639-771** TA GREEN  
**7639-772** ORANGE | **7639-773** WHITE  
'14-'19 ZR; '17-'19 TC; '12-'19 M, XF CC, XF HC; '12-'13 F



**7639-886**

**FLEX-TEC GUARDS**

- » Handles the toughest conditions while keeping your hands warm and protected
- » Used by pros on the snocross circuit
- » Rigid yet flexible backbone design
- » Models with mountain handlebars require trimming
- » Sold in pairs; includes machined aluminum mounts
- » See windscreen applications on pages 110-111 for compatibility

**7639-394** BLACK | **7639-395** TA GREEN | **7639-396** ORANGE  
**7639-397** WHITE | **7639-886** MED GREEN | **8639-048** PURPLE  
'14-'19 ZR; '17-'19 TC; '12-'19 M, XF CC, XF HC; '12-'13 F



**RUFFIAN GRIPS**

- » Soft compound grips offer better shock absorption
- » Includes two 8-in. grips, cut to length

**5639-655** UNIVERSAL



**PROCROSS GRIPS**

- » Slim, comfortable design
- » Includes two 6.2-in. grips

**7639-398** UNIVERSAL



**HAND GUARD LIGHT KIT**

- » Adds LED accent lighting to standard ProCross Hand Guards
- » Includes LED caps and wiring
- » Sold in pairs

**7639-779** '14-'19 ZR; '17-'19 TC;  
'12-'19 M, XF CC, XF HC; '12-'13 F



**BILLET BRAKE LEVER**

- » Comfortable, custom design with an anodized finish

**8639-051** BLACK | **8639-052** GRAY | **8639-053** PURPLE  
'19 ZR, TC, M, XF CC, XF HC



**PRO MTN CAP**

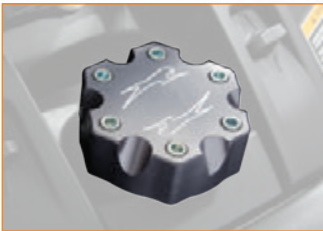
- » Lightweight, stylish billet aluminum

**7639-844** BLACK | **7639-926** GRAY | **8639-049** PURPLE  
'14-'19 ZR; '17-'19 TC; '12-'19 M, XF CC, XF HC; '12-'13 F

**PROCROSS CAP**

- » Billet aluminum for a custom look

**7639-405** BLACK | **8639-050** GRAY  
'14-'19 ZR; '17-'19 TC; '12-'19 M, XF CC, XF HC; '12-'13 F



**RECOIL HANDLE**

- » Custom anodized billet aluminum

**7639-407** BLACK | **7639-924** GRAY  
UNIVERSAL

**SUSPENSION BLOCKS**

- » Durable, heavy-duty anodized aluminum
- » Damage resistant during preload changes
- » Sold in pairs

**7639-401** BLACK | **7639-923** GRAY | **8639-055** PURPLE  
UNIVERSAL



**TANK PADS**

- » Provides comfort and grip
- » Sold in pairs

**7639-417** BLACK  
'18-'19 ZR, XF CC, XF HC, NOR, PTA 6/8000; '19 ZR, NOR, PTA 3/7000, NOR X 6/8000; '17-'19 ZR, KC, TC, XF HC 9000, ZR R XC 6000; '18 XF CT, XF CTK 6/8000; '17-'18 XF CTK 9000; '17 ZR RS 6000 (GEN 2 TRAIL)

**7639-774** BLACK  
'18-'19 M 6/8000, MC 8000; '19 M HC, MC A1 (GEN 2 MTN 6/8000)



**7639-413** BLACK | **7639-414** TA GREEN  
**7639-415** ORANGE  
'18 ZR, XF CT, XF CTK, NOR 3/7000; '14-'17 ZR, M, XF 4/5/6/7/8000; '16-'17 BC LT 3000; '14-'16 ZR, M, XF 9000; '12-'13 F (GEN 1)



CUSTOM



BILLET RACK

- » Durable billet aluminum with anodized finish
- » Low-profile design
- » Fits 2.5-gallon fuel can
- » 8 in. x 13 in.

8639-056 BLACK | 8639-057 GRAY | 8639-058 PURPLE  
'14-'19 ZR; '17-'19 TC; '12-'19 M, XF HC; '17-'19 KC; '19 M HC, MC A1; '13-'17 XF; '13 F



TUNNEL RACK

- » Stylish, lightweight, powder-coated aluminum
- » Fits 2.5-gallon fuel can
- » 8 in. x 14 in.

8639-059 BLACK | 8639-060 MED GREEN  
8639-061 GRAY | 8639-062 ORANGE | 8639-063 PURPLE  
'14-'19 ZR; '17-'19 TC; '12-'19 M, XF HC; '17-'19 KC; '19 M HC, MC A1; '13-'17 XF; '13 F

RACK STRAP

- » Strong, heavy-duty nylon straps
- » Quick-release buckle
- » Easily secures gear and gas cans

7639-463 '14-'19 ZR; '17-'19 TC;  
'12-'19 M, XF HC; '13-'17 XF; '13 F



2.5-GALLON FUEL CAN

- » Lightweight polyethylene plastic helps prevent fuel permeation
- » Includes spout with automatic shut-off and overflow protection
- » Meets or exceeds current U.S. and Canadian standards

1436-952



ARCTIC CAT SADDLELESS SKIS » Ideal for trails or backcountry » Includes 4-in. carbide wearbars



PROCROSS SKIS

- » 6-in. ski kit (pair)

6639-206 BLACK  
'14-'19 ZR; '12-'19 M, XF; '12-'13 F



ASCENDER SKIS

- » 6.5-in. ski kit (pair)

8639-064 BLACK  
'14-'19 ZR; '12-'19 M, XF; '12-'13 F



PROUTE SKIS

- » 8-in. center width with 10-in. tip (pair)

7639-032 BLACK  
'14-'19 ZR; '12-'19 M, XF; '12-'13 F

ARCTIC CAT SKI HANDLES

- » Fits Arctic Cat Saddleless Skis
- » Sold in pairs

6639-388 TA GREEN | 7639-820 MED GREEN | 5639-744 ORANGE  
6639-095 WHITE | 8639-047 PURPLE



C&A PRO XCS SKIS

- » A crossover ski that performs both on and off trail
- » Outboard keels reduce trail darting and deliver extra flotation in deep snow
- » Handles and mounting hardware included
- » 6.75-in. ski kit sold in pairs; wearbars sold separately

7639-498 BLACK  
'14-'19 ZR; '12-'19 M, XF; '12-'13 F



C&A PRO WEARBARS (PAIR)

6639-851 HARDWELD

6639-852 4-IN. CARBIDE

5639-604 6-IN. CARBIDE

SLP MOHAWK SKIS™

- » Provides predictable handling and great flotation
- » Includes handles, saddles and mounting hardware
- » 7-in. ski kit sold in pairs; wearbars sold separately

7639-093 BLACK  
'14-'19 ZR; '12-'19 M, XF; '12-'13 F



SLP POWDER PRO™ SKIS

- » Exceptional float and control in deep, loose snow
- » Includes handles, saddles and mounting hardware
- » 7-in. ski kit sold in pairs; wearbars sold separately

7639-095 BLACK  
'14-'19 ZR; '12-'19 M, XF; '12-'13 F

SLP WEARBARS (PAIR)

6639-928 HARDWELD

3639-420 4-IN. CARBIDE

3639-421 6-IN. CARBIDE

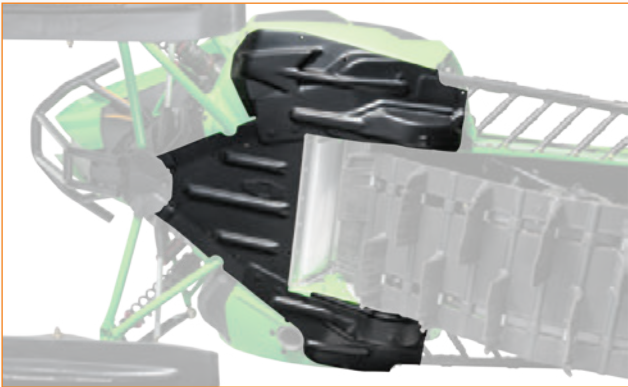


WWW.OCTANEINKWRAPS.COM

OUR MANUFACTURER'S SUGGESTED RETAIL PRICES EXCLUDE FREIGHT, HANDLING AND INSTALLATION. PRICES, PACKAGE QUANTITIES, SPECIFICATIONS AND MATERIALS MAY CHANGE WITHOUT NOTICE. FOR A DEALER NEAR YOU, VISIT ARCTICCAT.COM. FITS ALL MODEL VARIATIONS AND ENGINE PACKAGES UNLESS A SPECIFIC MODEL OR ENGINE DESIGNATION IS LISTED. FOR MODEL ABBREVIATION KEY, SEE PAGE 93.



CUSTOM



SKID PLATES

- » Absolute impact protection from bumper to heat exchanger
- » Super-rugged polyethylene protects vital components

**NOTE:** Some models may require trimming around exhaust outlet.

**7639-676** BLACK | **8639-065** MED GREEN  
‘18-‘19 ZR, XF CC, XF HC, NOR, PTA 6/8000;  
‘19 ZR, NOR, PTA 3/7000, NOR X 6/8000;  
‘17-‘19 ZR R XC 6000;  
‘18 XF CT, XF CTK 6/8000;  
‘17 ZR RS 6000 (GEN 2 TRAIL 6/8000)

**7639-421** BLACK  
‘17-‘19 ZR, TC, XF CC, XF HC 9000;  
‘17-‘18 XF CTK 9000;  
‘18 XF CT 9000 (GEN 2 TRAIL 9000)

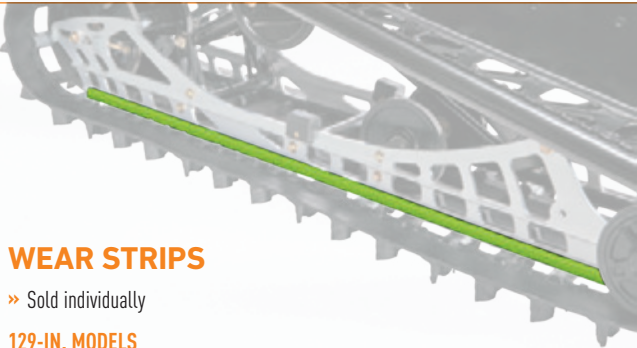
**7639-680** BLACK | **8639-066** MED GREEN  
‘18-‘19 M 6/8000, MC 8000;  
‘19 M HC, MC A1 (GEN 2 MTN 6/8000)

**7639-684** BLACK  
‘17-‘19 KC; ‘18 M 9000 (GEN 2 MTN 9000)

**7639-720** BLACK  
‘14-‘17 ZR 4/5/6/8000; ‘13-‘17 M, XF 6/8000;  
‘13-‘16 ZR, M, XF 9000; ‘13 F 800, 1100 (GEN 1)

**7639-425** BLACK  
‘17 MC 8000 LTD

**7639-089** BLACK  
‘14-‘18 ZR, XF CT 7000; ‘15-‘18 PTA 7000;  
‘16-‘18 XF CTK 7000; ‘15-‘16 XF HC 7000;  
‘14-‘15 XF, XF CC 7000



WEAR STRIPS

- » Sold individually

**129-IN. MODELS**  
**4604-402** MED GREEN | **4604-403** ORANGE

**137-IN. MODELS**  
**4604-404** MED GREEN | **4604-405** ORANGE

**141-IN.-153-IN. MODELS**  
**4604-406** MED GREEN | **4604-407** ORANGE

**162-IN. MODELS**  
**4604-408** MED GREEN | **4604-409** ORANGE

PERFORMANCE WEAR STRIPS

- » Wear strips feature DuPont™ Vespel® inserts for greater durability
- » Inserts are placed at a 45° angle across the strip for constant contact and even wear
- » Wide-profile wear strips keep the track running true for increased performance
- » Sold individually

**6639-448** 121-IN.-141-IN. MODELS

**6639-864** 153-IN.-162-IN. MODELS



SNOW MESH

- » Prevents snow and water infiltration
- » Screens install over vents/openings
- » Screens feature a coarse mesh to maximize airflow

**HOOD**  
**6639-106** ‘14-‘17 ZR 6/8000; ‘12-‘17 M, XF 6/8000; ‘12-‘13 F 800, 1100

**129-IN. MODELS**  
**5639-836** ‘14-‘18 ZR, XF 7000; ‘14-‘16 ZR, M, XF 9000; ‘12-‘13 F, M, XF 1100, 1100T

TUNNEL FLARES

- » Helps keep snow spray from being thrown up on the rider
- » Sold in pairs

**7639-969** BLACK  
‘14-‘19 ZR; ‘12-‘19 M, XF CC, XF HC;  
‘16-‘18 XF CTK; ‘13 F



SNOWFLAP

**6639-398** GREEN | **5639-843** ORANGE  
‘14-‘19 ZR; ‘12-‘19 M, XF CC, XF HC;  
‘16-‘18 XF CTK; ‘13 F



HOOD-MOUNTED MIRRORS

- » Mounts to the hood panel
- » Adjustable shaft for optimum view
- » Works with all production or accessory windshields
- » Sold in pairs

**5639-832** PAIR  
‘18 ZR 3/7000; ‘14-‘17 ZR, M, XF 4/5/6/7/8000;  
‘16-‘17 BC LT 3000; ‘14-‘16 ZR, M, XF 9000;  
‘12-‘13 F (GEN 1)

COMPACT MIRROR

- » Smaller design mounts to the inside of the windshield
- » Sold individually

**4639-565** ‘15-‘19 LYNX, LYNX LT; ‘15-‘18 BC LT 2000; ‘12-‘14 F5, F570;  
‘07-‘11 F; ‘08-‘14 T570, TZ1; ‘09-‘14 BC 570; ‘09-‘11 Z1



WIND DEFLECTORS

- » Lightweight, stylish deflectors add wind protection
- » Sold as a pair, with right and left deflectors

**7639-816** BLACK  
‘18-‘19 ZR, XF CC, XF HC, NOR, PTA 6/8000; ‘19 ZR, NOR, PTA 3/7000,  
NOR X 6/8000; ‘17-‘19 ZR, KC, TC, XF HC 9000, ZR R XC 6000; ‘18 XF CT,  
XF CTK 6/8000; ‘17-‘18 XF CTK 9000; ‘17 ZR RS 6000 (GEN 2 TRAIL)

**6639-453** BLACK  
‘18 ZR, XF CT, XF CTK, NOR 3/7000; ‘14-‘17 ZR, M, XF 4/5/6/7/8000;  
‘16-‘17 BC LT 3000; ‘14-‘16 ZR, M, XF 9000; ‘12-‘13 F (GEN 1)

WINDSHIELD MIRRORS

- » Mounts to the outside of the windshield
- » 6639-630, 6639-770 fit accessory mid touring and high touring windshields shown on page 111
- » 6639-902 fits ‘12-‘17 Production LXR windshields
- » Sold in pairs

**6639-630** PAIR | **6639-770** PAIR  
‘12-‘19 ACCESSORY  
MID TOURING & HIGH TOURING WINDSHIELDS

**6639-902** PAIR  
‘12-‘17 PRODUCTION LXR WINDSHIELDS



HAND MIRROR

- » Easy on/off with hook-and-loop strap

**4992-810**





# ZR 200



**COVER**

- » Custom-fit cover made from durable canvas
- » Accepts low or high windshield
- » Trailerable

**8639-011** '18-'19 ZR 200



**HIGH WINDSHIELD**

- » Adds warmth and protection
- » 10 in. H

**7639-838** '18-'19 ZR 120, 200



**TUNNEL PACK**

- » Compact gear storage
- » Quick-attach fasteners
- » 16 in. L x 10 in. W x 4 in. H

**7639-994** '18-'19 ZR 200



**TUNNEL RACK**

- » Low-profile aluminum rack with an anodized finish
- » 8 in. x 10 in.

**NOTE:** Cargo must not obstruct view of taillight.

**7639-982** '18-'19 ZR 200

**RUNNING BOARD GRIPS**

- » Traction grippers provide added boot grip
- » Includes aluminum foot grips and nylon edge-roll grips

**7639-728** '18-'19 ZR 200



**HANDLEBAR BAG**

- » Convenient, easy-attach storage

**7639-715** '18-'19 ZR 200



**HAND GUARDS**

- » Provides added hand protection
- » Includes injection-molded guards and flexible nylon mounting brackets
- » Sold in pairs

**8639-067** GREEN  
**8639-068** WHITE  
'18-'19 ZR 200



**FLEX-TEC GUARDS**

- » Adds style and warmth
- » Rigid yet flexible backbone design
- » Sold in pairs; includes machined aluminum mounts

**7639-911** GREEN  
**7639-912** PURPLE  
'18-'19 ZR 200



**SNOCROSS HANDLEBAR KIT**

- » Wider than stock handlebar with an adjustable height riser
- » Five-position riser adjusts up to 4-in. higher than the standard bar
- » Includes a 27-in. wide handlebar with hand warmer elements and grips

**7639-726** '18-'19 ZR 200



**CAT WRAPS**

- » Includes right and left hood and tunnel graphics

**7639-717** '18-'19 ZR 200



**HEAVY-DUTY SUSPENSION KIT**

- » Heavier suspension springs for larger riders
- » Includes ski shock and rear torsion springs

**7639-887** '18-'19 ZR 200



ZR 200

NUMBER PLATE KIT

- » Custom polyethylene number plates mount to the tunnel and seat support
- » Sold in pairs

7639-727 '18-'19 ZR 200



SPEEDOMETER KIT

- » Track your speed and RPM
- » Includes speedometer/tachometer, speed sensor and mounts

7639-927 '18-'19 ZR 200



TETHER SWITCH

- » Stops engine in the event that you fall off your sled
- » Attaches to your jacket D-ring

7639-732 '18 ZR 200

WEARBARS

- » Hardweld bars provide greater durability
- » 4-in. and 6-in. carbide wearbars add steering control on hardpack snow and ice
- » Sold in pairs

7639-888 HARDWELD '18-'19 ZR 120, 200

7639-889 4-IN. CARBIDE '18-'19 ZR 120, 200

7639-890 6-IN. CARBIDE '18-'19 ZR 120, 200



SKID WHEEL KIT

- » Adds wheels to the rear skid for use in low snow conditions
- » Not recommended for summer use
- » Includes wheels and mounts

7639-963 '18-'19 ZR 200

7639-967 '18-'19 ZR 120

ICE RACE TRACK

- » This lightweight, ISR-legal track accepts studs for ice racing
- » 0.500-in. lug height
- » Pre-marked stud locations

3602-220 '18-'19 ZR 200



TUNNEL PROTECTOR KIT

- » Required when installing studs

7639-971 '18-'19 ZR 200



STUD KIT

- » The ice racing stud kit for use with 3602-220 track
- » Includes 72 studs, T-nuts and support plates

7639-900 '18-'19 ZR 200 W/ 3602-220 TRACK



SPEEDWERX HYPERSHIFT CLUTCH KITS

- » Developed and trusted by Team Arctic racers
- » Designed for the demands of the high-performance rider
- » Provides smooth, hard-pulling acceleration with excellent back shifting and throttle response
- » Some models may see improved top speed
- » Kits vary by application, but most include adjustable machined weights, H5 alloy primary and secondary springs, and a custom-cut helix

8639-106 '19 ZR 6000, 0-5,000 ALT  
8639-107 '19 ZR 8000, 0-5,000 ALT  
8639-108 '19 M 8000, 3,000-6,000 ALT  
8639-109 '19 M 8000, 6,000-8,000 ALT  
8639-110 '19 M 8000, 8,000-10,000 ALT

7639-860 '18 ZR 6000, 0-5,000 ALT  
7639-862 '18 M 8000, 3,000-6,000 ALT  
7639-863 '18 M 8000, 6,000-8,000 ALT  
7639-864 '18 M 8000, 8,000-10,000 ALT

7639-855 '17 ZR 6000, 0-5,000 ALT  
7639-856 '17 ZR 8000, 0-5,000 ALT  
7639-857 '17 M 8000, 3,000-6,000 ALT  
7639-858 '17 M 8000, 6,000-8,000 ALT  
7639-859 '17 M 8000, 8,000-10,000 ALT  
7639-861 '18 ZR 8000, 0-5,000 ALT

7639-875 '16 ZR 6000, 0-5,000 ALT  
7639-876 '16 ZR 8000, 0-5,000 ALT  
7639-877 '16 M 8000, 3,000-6,000 ALT  
7639-878 '16 M 8000, 6,000-8,000 ALT  
7639-879 '16 M 8000, 8,000-10,000 ALT



FOUR WHEEL KIT

- » Replaces the stock tri-hub idler wheels and adds outside wheels
- » Helps keep track in proper alignment and spread the traction load evenly
- » Includes wheels, machined aluminum spacers and hardware

7.12-IN. WHEELS  
7639-865 '14-'18 ZR 129-IN.  
8.0-IN. WHEELS  
7639-866 '16-'18 ZR 137-IN.; '17-'18 TC, XF CC 137-IN.; '15 XF 137-IN.



PERFORMANCE



PANEL VENT KIT

- » Side panel vents allow cool air into the clutches and exhaust
- » Laser-cut aluminum grills with stainless steel mesh screens to keep the snow out
- » Sold in pairs

7639-972 BLACK | 7639-973 SILVER  
'18-'19 ZR, XF CC, XF HC, NOR, PTA 6/8000; '19 ZR, NOR, PTA 3/7000, NOR X 6/8000;  
'17-'19 ZR, KC, TC, XF HC 9000, ZR R XC 6000; '18 XF CT, XF CTK 6/8000;  
'17-'18 XF CTK 9000; '17 ZR RS 6000

7639-974 BLACK | 7639-975 SILVER  
'18-'19 M 6/8000, MC 8000; '19 M HC, MC A1

REAR WHEEL KIT

- » Outside idler wheels help keep track in proper alignment and spread load evenly across entire track
- » Recommended when adding studs to the models listed
- » Kit includes wheels, spacer blocks and hardware
- » Sold in pairs



7.12-IN. WHEELS  
6639-617 BLACK | 6639-618 GREEN | 6639-619 ORANGE  
6639-620 WHITE | 7639-882 MED GREEN  
'14-'18 ZR; '12-'13 F 129-IN.

8.0-IN. WHEELS  
6639-621 BLACK | 6639-622 GREEN | 6639-623 ORANGE  
6639-624 WHITE | 7639-883 MED GREEN  
'16-'18 ZR 137-IN.; '17-'18 TC, XF CC 137-IN.; '16-'19 M, XF HC 141-IN.;  
'12-'18 M 153-162-IN.

WHEEL KITS

- » Wheels provide increased performance in low snow conditions
- » Includes two 5.63-in. wheels with mounts and hardware

6639-808 '15-'18 ZR 129-IN.; '16-'18 ZR 137-IN.;  
'15 XF 137-IN.  
6639-184 '14 ZR; '12-'13 F 129-IN.; '14 XF 137-IN.





PERFORMANCE

DUAL SPEED COMPRESSION (DSC)

With DSC, you can adjust the shock's high- and low-speed compression damping by simply turning the external adjusters. DSC allows you to maximize small bump compliance and traction while still having the extra damping required for big hits.

EVOL AIR CHAMBER

The infinitely adjustable pressure setting in the extra volume (EVOL) air chamber regulates spring rate in the final portion of the stroke and controls the bottom-out characteristics of the shock.

KASHIMA COAT

FOX FLOAT 3 and ZERO shocks feature Genuine Kashima Coat. The distinctive gold color is backed by its high-performance properties that provide reduced friction, an exceptionally smooth feel and extreme durability.

QS3 (3 SETTING QUICK POSITION SWITCH)

Choose from three specifically calibrated ride control settings to tune in your own personal ride and handling setting. The QS3 supplies a wide range of adjustments while simply allowing the user to make a change quickly without tools.

REBOUND DAMPING

Rebound damping controls the rate at which the shock returns after it has been compressed. The proper rebound setting is a personal preference and changes with rider weight, riding style and conditions.

FOX FLOAT® 3 EVOL™

**POSITION:** Front ski shock (pair)  
**TYPE:** Trail or Mountain sleds  
**SPRING:** Air

ADJUSTMENT

- » Infinitely adjustable dual air spring
- » MAIN air chamber (ride height)
- » EVOL air chamber (bottom-out/roll control)

FEATURES

- » Genuine Kashima Coat
- » Samurai Sealing System (SSS)
- » EVOL air technology
- » Aerospace-grade PTFE-lined spherical bearings
- » High-flow velocity-sensitive damping
- » Chrome silicon negative spring
- » Fully rebuildable and revalveable
- » Ultra-lightweight

**7639-120** '14-'19 ZR; '14-'15 XF; '12-'13 F 42-IN.

**7639-015** '16-'19 M 36-IN.



FOX FLOAT 3 EVOL QS3-R

**POSITION:** Front ski shock (pair)

**TYPE:** Trail or Mountain sleds

**SPRING:** Air

ADJUSTMENT

- » Infinitely adjustable dual air spring
- » MAIN air chamber (ride height)
- » EVOL air chamber (bottom-out control)
- » 3-position quick switch
- » Wide-range rebound adjustment

FEATURES

- » Genuine Kashima Coat
- » Samurai Sealing System (SSS)
- » EVOL air technology
- » Aerospace-grade PTFE-lined spherical bearings
- » High-flow velocity-sensitive damping
- » Chrome silicon negative spring
- » Fully rebuildable and revalveable
- » Ultra-lightweight

**7639-074** '14-'19 ZR; '14-'15 XF; '12-'13 F 42-IN.;

**7639-581** '16-'19 M 36-IN.



AIRSHOX GUARDS

- » Protect your FLOAT shocks from any debris you may encounter
- » Fits all FLOAT 3, EVOL and EVOL R shocks with the air sleeve mounted up
- » Sold in pairs

**7639-640** BLACK  
**7639-641** TA GREEN  
**7639-642** ORANGE  
**7639-643** WHITE



FOX® ZERO QS3-R

**POSITION:** Front ski shock (pair)  
**TYPE:** Trail or Mountain sleds  
**SPRING:** Coil

ADJUSTMENT

- » 3-position quick switch
- » Wide-range rebound adjustment
- » Spring preload

FEATURES

- » 1.5-in. shock body
- » Genuine Kashima Coat
- » FOX Ice Scraper Technology (FIST)
- » Aerospace-grade PTFE-lined spherical bearings
- » High-flow velocity-sensitive damping
- » Fully rebuildable and revalveable

**7639-430** '14-'19 ZR; '14-'15 XF; '12-'13 F 42-IN.

**7639-078** '16-'19 M 36-IN.



DIGITAL PUMP

- » Easily adjust FOX FLOAT air pressure in the shop or on the trail
- » Reads 0-300 psi

**7639-121**



FOX FACTORY SERIES TRACK SHOCKS

Take your riding to a world-class level with the lightweight performance and adjustability of the new Factory Series Track Shocks. Developed and tuned in collaboration with backcountry experts, these Factory Series shocks will allow you to fine tune the skid to help absorb anything you may encounter on the mountain.

**POSITION:** Rear track shock (pair)  
**TYPE:** Mountain  
**SPRING:** Air or coil

ADJUSTMENT (COIL)

- » 3-position quick switch
- » Spring preload
- » Wide-range rebound (QS3-R)

FEATURES (COIL)

- » Custom tuned specifically for M sleds
- » Genuine Kashima Coat
- » High-flow velocity-sensitive damping
- » Fully rebuildable and revalveable
- » 1.5-in. bore shock body
- » FOX Ice Scraper Technology (FIST)
- » Aerospace-grade PTFE-lined spherical bearings

ADJUSTMENT (FLOAT)

- » FLOAT 3 EVOL (front arm)
- » Infinitely adjustable dual air spring
- » FLOAT 3 EVOL QS3-R (rear arm)
- » MAIN air chamber (ride height)
- » EVOL air chamber (bottom-out control)
- » Wide-range rebound adjustment
- » Three-position quick switch

FEATURES (FLOAT)

- » Custom tuned specifically for M sleds
- » Genuine Kashima Coat
- » High-flow velocity-sensitive damping
- » Fully rebuildable and revalveable
- » Samurai Sealing System (SSS)
- » EVOL air technology
- » Ultra-lightweight

AIR

- » FLOAT 3 EVOL FRONT ARM
- » FLOAT 3 EVOL QS3-R REAR ARM

**7639-017** '16-'17 M 141-162-IN., XF HC 141-153-IN.

COIL

- » 1.5 ZERO QS3 FRONT ARM
- » 1.5 ZERO QS3-R REAR ARM

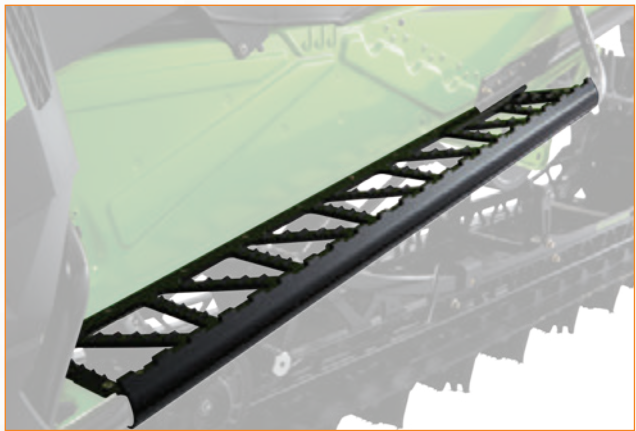
**7639-582** '16-'17 M 141-162-IN., XF HC 141-153-IN.







# MOUNTAIN



### BLACK CATS RUNNING BOARDS

- » Rugged, extruded 6061 aluminum boards add strength and reduce snow buildup
- » Aggressive edge grip traction
- » Installation requires removal of stock running boards
- » Includes right-hand and left-hand boards
- » 6.5 lbs.

**7639-437** BLACK | **7639-438** SILVER  
**8639-078** MED GREEN | **8639-079** PURPLE  
'18-'19 M; '17-'19 MC, KC; '19 MC HC, MC A1 141-165-IN.  
**7639-435** BLACK | **7639-436** SILVER  
'12-'17 M 153-162-IN.; '12-'19 XF HC 141-153-IN.; '16-'17 M 141-IN.



### PRO MTN RUNNING BOARDS

- » Aluminum running boards feature an open-tube design that eliminates snow buildup
- » Includes aggressive, injection-molded rail grippers
- » 6.25-in. front stirrup width
- » Front support tube allows a more forward foot position when sidehilling
- » Installation requires removal of stock running boards
- » Includes right-hand and left-hand boards and rail grippers
- » Accepts Black Cats Rear Bumpers
- » 8.5 lbs.

**8639-070** BLACK | **8639-071** MED GREEN  
**8639-072** ORANGE | **8639-073** PURPLE  
'12-'19 M 153-162-IN., XF HC 141-153-IN.; '19 MC HC 153-162-IN., MC A1 154-165-IN.; '17-'19 MC, KC 153-162-IN.; '16-'19 M 141-IN.



7639-790

### PRO MTN BUMPER

- » Lightweight aluminum bumper features an aggressive design
- » Open design minimizes snow buildup
- » Durable powder-coat finish
- » 3.0 lbs.

**7639-788** BLACK | **7639-789** TEAM ARCTIC GREEN | **7639-790** ORANGE  
**7639-792** MED GREEN | **8639-037** GRAY | **8639-038** PURPLE  
'18-'19 ZR, M, XF CC, XF HC, NOR, PTA 6/8000; '19 ZR, NOR, PTA 3/7000, NOR X 6/8000; '18 XF CT, XF CTK 6/8000; '17 ZR RS; '17-'18 ZR R XC 6000 (GEN 2)  
**7639-308** BLACK | **7639-309** TEAM ARCTIC GREEN | **7639-310** ORANGE  
'18 ZR, XF CT, XF CTK, NOR 3/7000; '14-'17 ZR, M, XF 4/5/6/7/8000; '14-'16 ZR, M, XF 9000; '12-'13 F (GEN 1)



8639-039

### PROCLIMB BUMPER

- » Large-diameter top tube provides added protection
- » Open-tube design lets snow drop through
- » Durable powder-coat finish
- » 3.5 lbs.

**7639-794** BLACK | **7639-795** TEAM ARCTIC GREEN | **7639-796** ORANGE  
**7639-798** MED GREEN | **8639-039** GRAY | **8639-040** PURPLE  
'18-'19 ZR, M, XF CC, XF HC, NOR, PTA 6/8000; '19 ZR, NOR, PTA 3/7000, NOR X 6/8000; '18 XF CT, XF CTK 6/8000; '17 ZR RS; '17-'18 ZR R XC 6000 (GEN 2)  
**6639-286** BLACK | **6639-287** TEAM ARCTIC GREEN | **6639-288** ORANGE  
'18 ZR, XF CT, XF CTK, NOR 3/7000; '14-'17 ZR, M, XF 4/5/6/7/8000; '14-'16 ZR, M, XF 9000; '12-'13 F (GEN 1)

**7639-800** BLACK | **7639-804** MED GREEN  
'17-'19 ZR, KC, TC, XF HC 9000; '18-'19 XF CC 9000; '17-'18 XF CTK 9000; '18 XF CT 9000 (GEN 2 9000)



### BLACK CATS REAR BUMPER

- » Rugged bumper features aluminum side plates and a tubular grab handle
- » Embossed features add style and strength
- » Durable powder-coat finish
- » Accepts Pro Mtn Running Boards
- » 153-in., 4.5 lbs.; 162-in. 5.2 lbs.

**8639-085** BLACK | **8639-086** MED GREEN | **8639-087** GRAY | **8639-088** ORANGE | **8639-089** PURPLE  
'12-'19 M 153-IN.; '19 M HC 153-IN., MC A1 154-IN.; '17-'19 XF HC 153-IN.; '13-'15 XF HC 141-IN.

**8639-091** BLACK | **8639-092** MED GREEN | **8639-093** GRAY | **8639-094** ORANGE | **8639-095** PURPLE  
'12-'19 M; '17-'19 KC; '19 M HC 162-IN.; '19 MC A1 165-IN.



### PRO MTN WINDSCREEN

- » Unique design acts as a low-profile windscreen while providing glove/goggle storage
- » Semi-rigid construction holds its shape

**7639-293** '18-'19 6/8000; '14-'19 7000; '17-'19 3000  
MODELS W/ MOLDED WINDSHIELD MOUNTS  
**7639-292** '14-'17 4/5/6/8000; '14-'16 9000; '12-'13 F  
MODELS W/ ALUMINUM WINDSHIELD MOUNTS



# MOUNTAIN

## TRACK RACK SYSTEM

Unique design allows you to easily slide a Utility Jug or Gear Bag on and off your tunnel. Raised mounting track keeps the gear away from your tunnel. Mounting tracks are made of HDPE plastic for durability plus resistance to snow and ice buildup. Heavy-duty Utility Jugs are UV-protected. Hard-sided Gear Bags are made of water-resistant polyester with a urethane-coated outer shell and feature padded foam lining. The Utility Jug and Gear Bag base slides easily onto the mounting track. Mounting Track, Utility Jugs and Gear Bags are sold separately.

**NOTE:** Utility Jugs are not intended for fuel storage.



### UTILITY JUG

- » Available in two sizes
- » 1.3 gallon, 9.75 in. x 6 in. x 9 in.
- » 3.3 gallon, 9.75 in. x 13 in. x 9 in.

**NOTE:** Not intended for fuel storage.

**7639-205** 1.3 GALLON (FITS MOUNTING TRACK KIT)

**7639-207** 3.3 GALLON (FITS MOUNTING TRACK KIT)



### GEAR BAG

- » Includes two zippered interior storage pockets and elastic tie-down straps
- » Exterior straps holds your shovel or gear
- » 9.75 in. x 13 in. x 8.5 in.

**7639-211** FITS MOUNTING TRACK KIT



### MOUNTING TRACK KIT

- » Raised rail design helps keep your tunnel from being damaged
- » Includes two 14-in. tracks and mounting hardware
- » Fit models with a flat-top tunnel

**7639-204** '14-'19 ZR; '17-'19 TC; '12-'19 M, XF HC; '17-'19 KC; '19 M HC, MC A1; '13-'17 XF; '13 F



### RAIL PACK

- » Compact bag can be used alone or with 1.3-gallon utility jug
- » Includes a zippered interior storage pocket
- » 9.75 in. x 6 in. x 8.5 in.

**7639-209** FITS MOUNTING TRACK KIT



### LOW-PROFILE BAG

- » Includes a zippered interior storage pocket and elastic tie-down straps
- » Exterior straps holds your shovel or gear
- » 9.75 in. x 13 in. x 6.5 in.

**7639-210** FITS MOUNTING TRACK KIT



### TUNNEL RACK

- » Stylish, lightweight, powder-coated aluminum
- » Fits 2.5-gallon fuel can
- » 11 in. x 14 in.

**8639-059** BLACK | **8639-060** MED GREEN | **8639-061** GRAY  
**8639-062** ORANGE | **8639-063** PURPLE  
'14-'19 ZR; '17-'19 TC; '12-'19 M, XF HC; '17-'19 KC; '19 M HC, MC A1; '13-'17 XF; '13 F



### BILLET RACK

- » Durable billet aluminum with anodized finish
- » Low-profile design
- » Fits 2.5-gallon fuel can
- » 8 in. x 13 in.

**8639-056** BLACK | **8639-057** GRAY | **8639-058** PURPLE  
'14-'19 ZR; '17-'19 TC; '12-'19 M, XF HC; '17-'19 KC; '19 M HC, MC A1; '13-'17 XF; '13 F

### B-1 EXT SHOVEL

- » Extendable-handle shovel with an unbeatable strength-to-weight ratio
- » Tough oval shaft with an ergonomic grip
- » Extends up to 28.75 in. long, 9 in. x 10 in. blade, 1.3 lbs.

**5639-770**



### A-2 EXT SHOVEL

- » An integrated shovel system with a larger blade and extendable handle
- » Includes an 11.4-in. snow/wood saw stowed inside the grip
- » Extends up to 30.5 in. long, 10 in. x 11 in. blade, 1.9 lbs.

**5639-786**



### D-2 EXT SHOVEL

- » Converts from a traditional shovel to a hoe
- » Move more snow without lifting it
- » Includes a 6.5-in. snow/wood saw stowed inside the shaft
- » Extends to 32 in. long, 10 in. x 11 in. blade, 2.1 lbs.

**7639-765**



### POCKET SAW

- » High-strength, heat-treated steel
- » Rust-resistant coating
- » Retains sharpness
- » Storage bag included

**4639-979**



### BACKCOUNTRY KIT

- » BCA Stash 20L Backpack
- » B-1 Ext Shovel
- » Stealth 270 Probe

**8639-101**



### BACKCOUNTRY PRO KIT

- » BCA Throttle 25L Backpack
- » Tracker S Avalanche Transceiver
- » D-2 EXT Shovel
- » Stealth 270 Probe

**8639-115**





MOUNTAIN

AVALANCHE AIRBAGS

The Float avalanche airbag system is designed to keep you at or near the surface during an avalanche. It is the most proactive snow safety tool you can carry into avalanche terrain. Our Float avalanche airbags are both affordable and easily reusable.

- » Features a small 2,700-psi (186 bar) compressed-air cylinder, single-chamber 150-liter airbag and super-efficient venturi system
- » Trigger is located on right shoulder strap, allowing you to keep your right hand on the throttle
- » Includes pressurized air cylinder
- » Hazardous-shipping charges may apply



FLOAT MTNPRO VEST

- » Lightweight, protective vest with airbag
- » Full front, side and back protection
- » Two sizes to fit most riders
- » Float 1.0 System
- » Shovel not included
- » 8.6 lbs., 20-liter capacity

7639-891 M/L  
7639-892 XL/XXL



FLOAT TURBO 15™

- » Internal tool pocket for shovel and probe
- » External shovel carry (shovel not included)
- » Float 2.0 System
- » 6.1 lbs., 15-liter capacity

8639-111



FLOAT TURBO 25™

- » Internal tool pocket for shovel and probe
- » External shovel carry (shovel not included)
- » Float 2.0 System
- » 6.9 lbs., 25-liter capacity

8639-112

AVALANCHE TRANSCEIVERS

In an on-mountain emergency, these easy-to-use and efficient beacons are a necessity among your supplies.

TRACKER3™

- » BCA's most efficient, progressive design and most precise pinpointing
- » Instantaneous, real-time display
- » Small and light with three antennas for no-nonsense multiple burial searching
- » Includes harness

6639-406



TRACKER S

- » Simplicity is speed — Our stripped-down, more affordable transceiver.
- » All the performance of the T3, without motion-sensing or upgradeable software.

8639-113



AVALANCHE PROBES

BCA Quick-Lock probes save valuable seconds when time matters. They offer the easiest and fastest assembly on the market, all while freeing up valuable storage space in your pack.

CARBON 240

- » Our lightest probe with a carbon fiber shaft and screened depth markings
- » Collapsed 15.7 in., extended 7 ft. 11 in.
- » 7.6 oz.

7639-563



STEALTH 270

- » High-strength aluminum probe with laser-etched depth markings for added durability
- » Collapsed 17.7 in., extended 8 ft. 10 in.
- » 10.4 oz.

6639-444



BC LINK™ RADIOS

Strong group communication is the key to any successful day riding the mountains. Find separated riders, communicate plans and share observations in real time with the BC Link communication system. The Smart Mic user interface is located at your fingertips, meaning you never need to dig your two-way radio out of your pack to change settings. Glove-friendly controls include: on/off and volume control, channel control, push-to-talk button, loudspeaker, earphone jack and battery indicator. Rechargeable lithium ion battery pack provides up to four days of battery life in cold weather. BC Link two-way radios operate on 22 FRS GMRS channels + 121 sub-channels to ensure minimal interference.



BC LINK RADIO 1.0

- » 1 Watt

7639-466



BC LINK RADIO 2.0

- » 2 Watt for increased usable range

8639-114

BCA STASH 20L

- » Dedicated tool pocket for shovel and probe
- » Hydration compatible with insulated shoulder strap
- » Accepts BC Link Radio system
- » 2.9 lbs., 20-liter capacity, 20 in. height

7639-991



BCA THROTTLE 25L

- » Dedicated tool pocket for shovel and probe (shovel not included)
- » Hydration compatible with dual insulated sleeve in shoulder straps
- » Accepts BC Link Radio system
- » 3.3 lbs., 25-liter capacity, 22 in. height

7639-992



OGIO CORNICE

- » A backcountry pack with easy access to safety gear
- » Fleece-lined goggle pocket
- » Internal and external shovel and probe pockets
- » Comfortable waist and sternum straps
- » Hydration compatible with an insulated sleeve in shoulder strap
- » 3.3 lbs., 37-liter capacity, 24-in. height

6639-445





MOUNTAIN



COBRA

- » Sled-to-sled pulling tool
- » Made of stretch cords bundled in a corrugated vinyl tube with a hook on both ends
- » Creates 300 to 400 lbs. of static pulling force

5639-640



RATTLER

- » Maximizes the pulling force of your body
- » Made of strong stretch cords bundled in a corrugated vinyl tube
- » Safety strap hook attaches to the ski of the stuck sled with a grab handle on the other end

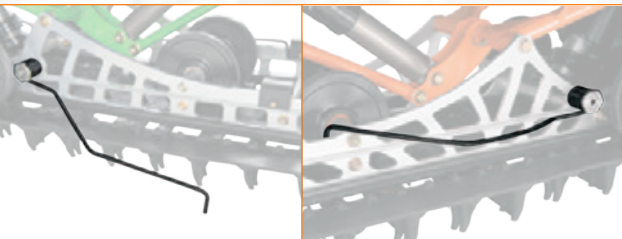
5639-639



SLICKTAPE 20

- » Ultrastrong, lightweight 20-ft. towline
- » 2,500 lbs. tensile strength
- » Use in conjunction with Rattler or Cobra
- » Includes storage bag

5639-643



ICE SCRATCHERS

- » Helps prevent wear strip “wear” and overheating when on ice and hardpack
- » Use caution when operating sled in reverse
- » Sold in pairs

5639-897 '12-'15 M, XF; '05-'11 M



SWITCH GUARDS

- » Helps prevent accidental bumping of control switches
- » Includes switch guard and adhesive

8639-097 '19 ZR, TC, M, XF CC, XF HC (LH)

5639-580 '14-'18 ZR; '12-'18 M, XF; '12-'13 F (RH & LH)

VENTED SIDE PANELS

- » Releases underhood heat in extreme conditions
- » Includes right- and left-routed side panels with snow mesh screens
- » Decals not included
- » Saves 1.0 lb.

**NOTE:** This accessory may not be trail legal in all areas. It might amplify or otherwise increase total noise emissions to a level greater than that emitted by the snowmobile as originally constructed. Check your local snowmobile regulations before installation.

7639-817 BLACK | 7639-818 GRAY  
'18-'19 M 6/8000, MC 8000; '19 M HC, MC A1

5639-865 BLACK  
'14-'17 M, XF 4/5/6/8000; '14-'18 ZR, M, XF 7000; '14-'16 M, XF 9000



BAR RISERS

- » Strong extruded aluminum
- » Powder-coat finish

**NOTE:** Due to control cable and brake line restrictions, 7.5-in. and 8.5-in. risers are recommended for '12-'19 M models only.

'14-'19 ZR; '17-'19 KC, TC; '12-'19 M, XF;  
'12-'13 F W/ FIXED STEERING POST

6639-422 BLACK 3.5-IN.

5639-881 BLACK 4.5-IN.

5639-882 BLACK 5.5-IN.

5639-883 BLACK 6.5-IN.

5639-884 BLACK 7.5-IN.

5639-885 BLACK 8.5-IN.



TELESCOPIC STEERING POST

- » Simple one-hand adjustment allows you to quickly choose your handlebar height within a 4-in. range for the way you ride
- » Nine-position height adjustment range from 1.5-in. higher to 1.5-in. lower than a standard 4.5-in. fixed riser

7639-848 '16-'19 M 6/8000; '17-'19 MC 8000;  
'19 MC HC, MC A1; '14-'17 M 8000 HCR



RAIL BRACE KIT

- » Provides strength and durability in extreme conditions
- » Includes right-hand and left-hand rail braces and mounting hardware
- » 153-in., 7.5 lbs.; 162-in. 8.0 lbs.

7639-819 BLACK '17-'19 M, MC; '19 MC HC 153-IN.

7639-588 SILVER

7639-821 BLACK '17-'19 M, KC; '19 MC HC 162-IN.

7639-709 SILVER



MOUNTAIN HANDLEBAR

- » Includes over-molded grab strap, grips and heating elements

**LIGHTWEIGHT, 2.0 LBS.**

7639-489 '12-'18 M; '14-'18 XF HC; '12-'15 XF  
7639-983 '19 M 6/8000, MC, M HC, MC A1 8000

**HEAVY-DUTY 2.9 LBS.**

7639-490 '12-'18 M; '14-'18 XF HC; '12-'15 XF  
7639-984 '19 M 6/8000, MC, M HC, MC A1 8000

FIXED STEERING POST

- » Converts models with telescopic steering to a fixed post
- » Includes upper steering post with a 4.5-in. riser block

7639-985  
'16-'19 XF HC 6/8000;  
'15 M SP, XF HC 6000;  
'14-'15 M SP, XF HC 8000;  
'12-'13 M SP, M HCR,  
XF HC 800



RAIL CAP WHEEL KIT

- » Helps prevent track from contacting the slide-rail end caps
- » Includes two 2.5 in. x 0.787 in. idler wheels, rail caps and a heavy-duty axle shaft

7639-987  
'12-'14 M; '12-'15 XF; '05-'11 M



UTILITY



PASSENGER SEAT

- » Passenger seat with backrest, handholds and footrests
- » Includes seat assembly and tunnel-mounted storage box

7639-833 '18-'19 BC 7000 XT



REAR RACK

- » Steel construction
- » Provides added cargo capacity
- » 20 in. L x 18 in. W x 6 in. H
- » Four-bolt attachment

6639-892 '16-'19 BC 7000 XT



RADIATOR GUARD

- » Tough, powder-coated steel plate protects the radiator from sticks and debris

7639-192 '16-'19 BC 7000 XT



HEAVY-DUTY BUMPER

- » Steel tube construction
- » Provides added protection
- » Accepts Winch Kit (6639-894)

6639-890 '16-'19 BC 7000 XT, PTA 7000 XT LTD



WINCH KIT

- » Arctic Cat/WARN® designed and engineered
- » Powerful permanent magnet motor with 3,000 lbs. of pulling capacity
- » Convenient handlebar-mounted switch
- » Solenoid controller for key-only operation
- » Includes winch with mounting plate, roller fairlead, solenoid, handlebar switch and front harness
- » Includes 50 ft. of durable wire cable
- » Requires Heavy-Duty Bumper

6639-894 '16-'19 BC 7000 XT, PTA 7000 XT LTD



LIGHT BAR

- » Positions the work light above the rider's head for greater visibility
- » Strobe light for added safety
- » Includes tubular steel frame, work light, strobe light, wiring and switches
- » Four-bolt attachment
- » 47-in. high

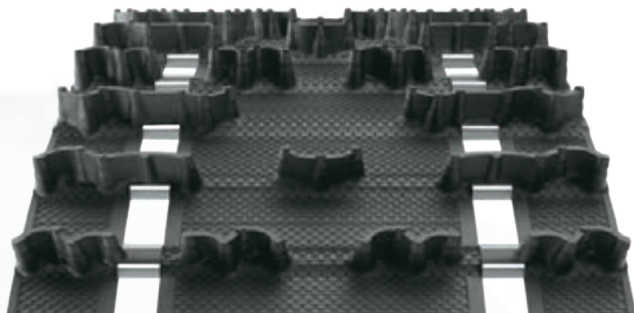
6639-905 '16-'19 BC 7000 XT



# TRACKS

## COBRA™

- » Cupped lugs for superior handling, acceleration and braking on soft, loose trails
- » Excellent off-trail performance without sacrificing top speed



## POWER CLAW™

- » This lightweight single-ply track sets the standard for deep snow performance
- » Stagger-set, curved-forward paddle towers won't fold over or take a set
- » Available in 2.25-in. and 2.6-in. lug heights with 80 or 85 durometer



## 3-IN. POWER CLAW

- » Full 3-in. lug height brings maximum control to even the deepest snow
- » Lightweight single-ply track features stagger-set, curved-forward paddle towers that won't fold over or take a set
- » 80 durometer hardness rating for rugged performance
- » Requires 7-tooth driveshaft



## HACKSAW™

- » Crescent lug design with recessed tips and cutting edges provides grip on hard-packed trails
- » Narrow lug base provides less rolling resistance for maximum top speed



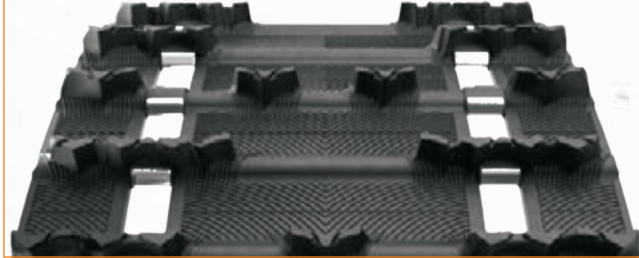
## RIPSAW™

- » Aggressive angled lug profiles for outstanding traction on groomed trails
- » Rigid lugs provide excellent durability



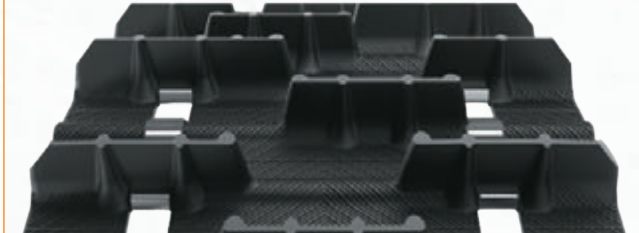
## RIPSAW II

- » Lug design combines the best features of Ripsaw and Cobra tracks for excellent all-around performance
- » Less track noise for quieter operation on hard-packed trails



## BACKCOUNTRY X

- » Snocross-inspired, arched lugs are staggered for outstanding traction in soft snow
- » Rigid lug support columns for on- and off-trail performance



Part Number	Dimensions	Wt (Lbs.)	Clips
PERFORMANCE 2.52 P			
*1602-976	15 in. x 121 in. x 1.00 in. — Hacksaw — 80/70 Duro	33	Every 3rd
*2602-268	15 in. x 121 in. x 1.352 in. — Cobra (Single-Ply) — 80 Duro	32	Every Other
*2602-002	15 in. x 121 in. x 1.25 in. — Ripsaw — 80/70 Duro	36	Every 3rd
*2602-047	14 in. x 128 in. x 1.00 in. — Hacksaw — 80/70 Duro	34	Every 3rd
*2602-019	15 in. x 128 in. x 1.00 in. — Hacksaw — 80/70 Duro	36	Every 3rd
*2602-162	15 in. x 128 in. x 1.352 in. — Cobra — 80 Duro	37	Every Other
*2602-255	15 in. x 128 in. x 1.352 in. — Cobra (Single-Ply) — 80 Duro	34	Every 3rd
*2602-046	15 in. x 128 in. x 1.25 in. — Ripsaw — 80/70 Duro	41	Every 3rd
*2602-835	15 in. x 128 in. x 1.50 in. — Ripsaw — 80/70 Duro	42	Every 3rd
*1602-997	15 in. x 136 in. x 1.25 in. — Ripsaw — 80/70 Duro	42	Every 3rd
PERFORMANCE 2.86 P			
*2602-575	15 in. x 129 in. x 1.00 in. — Ripsaw II — 80/70 Duro	36	Every Other
2602-503	15 in. x 129 in. x 1.00 in. — Ripsaw II — 80/70 Duro	34	Every Other
*2602-576	15 in. x 129 in. x 1.25 in. — Ripsaw — 80/70 Duro	38	Every Other
2602-474	15 in. x 129 in. x 1.25 in. — Ripsaw — 80/70 Duro	38	Every Other
2602-490	15 in. x 129 in. x 1.25 in. — Ripsaw II — 80/70 Duro	40	Every Other
2602-491	15 in. x 129 in. x 1.352 in. — Cobra — 80/70 Duro	36	Every Other
2602-865	15 in. x 129 in. x 1.70 in. — Sno Pro® — 80/70 Duro	42	Every Other
2602-627	15 in. x 137 in. x 1.25 in. — Ripsaw II — 80/70 Duro	42	Every Other
*2602-628	15 in. x 137 in. x 1.50 in. — Ripsaw — 80/70 Duro	44	Every Other
*2602-909	15 in. x 137 in. x 1.60 in. — Cobra — 80/70 Duro	44	Every Other
2602-669	15 in. x 137 in. x 1.75 in. — Backcountry X — 80/70 Duro	45	Every Other
TOURING			
2602-528	15 in. x 136 in. x 1.00 in. — Hacksaw 2.52 P — 80/70 Duro	37	Every 3rd
2602-101	15 in. x 144 in. x 1.00 in. — Hacksaw 2.52 P — 80/70 Duro	40	Every 3rd
*2602-163	15 in. x 144 in. x 1.352 in. — Cobra 2.52 P — 80 Duro	41	Every Other
*2602-350	15 in. x 144 in. x 1.50 in. — Crossover 2.52 P (Single-Ply) — 80 Duro	47	Every 3rd
*2602-521	15 in. x 146 in. x 1.00 in. — Ripsaw II 2.86 P — 80/70 Duro	42	Every Other
2602-512	15 in. x 146 in. x 1.25 in. — Ripsaw 2.86 P — 80/70 Duro	44	Every Other
*2602-933	15 in. x 146 in. x 1.352 in. — Cobra 2.86 P — 80/70 Duro	44	Every Other
3602-067	15 in. x 154 in. x 1.60 in. — Cobra 2.86 P (Single-Ply) — 80/70 Duro	46	Every Other
MOUNTAIN TRACKS 3.0 P			
2602-169	15 in. x 141 in. x 1.352 in. — Cobra (Single-Ply) — 80 Duro	38	Every Other
2602-170	15 in. x 141 in. x 1.60 in. — Cobra (Single-Ply) — 80 Duro	40	Every Other
3602-143	15 in. x 141 in. x 2.25 in. — Power Claw (Single-Ply) — 80 Duro	44	Every Other
3602-141	15 in. x 141 in. x 2.60 in. — Power Claw (Single-Ply) — 80 Duro	48	Every Other
3602-145	15 in. x 153 in. x 1.75 in. — Backcountry X — 80/70 Duro	50	Every Other
3602-142	15 in. x 153 in. x 2.25 in. — Power Claw (Single-Ply) — 80 Duro	51	Every Other
2602-399	15 in. x 153 in. x 2.25 in. — Power Claw (Single-Ply) — 85 Duro	48	Every Other
3602-140	15 in. x 153 in. x 2.60 in. — Power Claw (Single-Ply) — 80 Duro	56	Every Other
2602-482	15 in. x 153 in. x 2.60 in. — Power Claw (Single-Ply) — 85 Duro	56	Every Other
† 3602-138	15 in. x 153 in. x 3.00 in. — Power Claw (Single-Ply) — 80 Duro	53	Every Other
2602-168	15 in. x 162 in. x 2.25 in. — Power Claw (Single-Ply) — 80 Duro	50	Every Other
2602-438	15 in. x 162 in. x 2.25 in. — Power Claw (Single-Ply) — 85 Duro	50	Every Other
2602-483	15 in. x 162 in. x 2.60 in. — Power Claw (Single-Ply) — 80 Duro	58	Every Other
2602-484	15 in. x 162 in. x 2.60 in. — Power Claw (Single-Ply) — 85 Duro	58	Every Other
† 3602-137	15 in. x 162 in. x 3.00 in. — Power Claw (Single-Ply) — 80 Duro	56	Every Other
UTILITY 2.52 P			
2602-314	15 in. x 151 in. x 1.25 in. — Ripsaw (Single-Ply) — 80/70 Duro	46	Every Other
0602-962	20 in. x 156 in. x 1.00 in. — 60 Duro	63	Fully Clipped
1602-869	20 in. x 156 in. x 1.25 in. — 80 Duro	67	Fully Clipped
UTILITY 2.86 P			
2602-358	20 in. x 154 in. x 1.375 in. (Single-Ply) — 80/70 Duro	60	Every 3rd
2602-639	20 in. x 154 in. x 1.375 in. (Single-Ply) — 60 Duro	61	Every Other
*3602-058	20 in. x 154 in. x 1.375 in. — Bear Claw (Single-Ply) — 80/70 Duro	54	Every Other
*3602-059	20 in. x 154 in. x 1.60 in. — Bear Claw (Single-Ply) — 80/70 Duro	56	Every Other

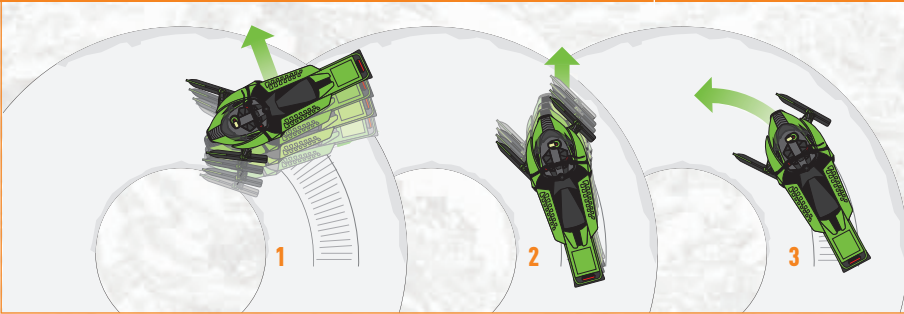
ALL TRACKS LISTED FEATURE AN "ALL OPEN" WINDOW CONFIGURATION WITH 2-PLY CONSTRUCTION (UNLESS NOTED AS SINGLE-PLY).  
PRICE PER MONTH RANGES FROM \$13.37 TO \$18.89 TO \$47.51/\$33.95. \*ACT QUIET TRACKS ARE FOR USE ON '03 AND NEWER MODELS ONLY. † REQUIRES 7-TOOTH DRIVE SHAFT.  
FITS ALL MODEL VARIATIONS AND ENGINE PACKAGES UNLESS A SPECIFIC MODEL OR ENGINE DESIGNATION IS LISTED. FOR MODEL ABBREVIATION KEY, SEE PAGE 93.



# TRACTION & CONTROL

## MAXIMIZE STEERING CONTROL

The length of the turning carbide (carbide inserted directly under the steering spindle) is the determining factor on steering control. The longer the turning carbide, the more positive turning becomes. Too few studs with long turning carbides can result in the situation shown in Illustration 1 below.



## MAXIMIZE TRACTION CONTROL

The quantity and types of studs inserted through the track can have several effects. If installed improperly, track and/or stud damage can result. If the pushing force from an excessive number of studs exceeds the ability of the steering to control the force, the effect could be like that in Illustration 2. In this case, the studs tend to “push” the skis in a straight line.

- 1 Back end loose. Too much carbide, not enough steering control.
- 2 Front end pushes. Weak steering from worn wearbars, turning carbides too short or overstudding on track.
- 3 Steering control and stud quantity are in balance for proper setup.

## TUNE YOUR SLED’S HANDLING TO YOUR RIDING STYLE

Determining the proper traction and control is simple. What’s your riding style: Are you a conservative trail rider or a performance trail rider? Look at the chart below. Find the line with the horsepower of your sled. Look under your riding category. Here you will discover the number of studs and the length of the carbide wearbar you should use. This is a baseline guide for stud and wearbar selection. See your dealer for specific model applications.

### STUD QUANTITY / INCHES OF TURNING CARBIDE

SLED	TRAIL	PERFORMANCE
50–75 HP	48/4 in.	48/6 in.
75–125 HP	102/6 in.	153/8 in.
125–150 HP	153/8 in.	153/10 in.
150–200 HP	153/8 in.	153/10 in.

FOR STUD PLACEMENT, USE ONLY ARCTIC CAT-APPROVED STUD TEMPLATES SHOWN ON PAGE 139.

Arctic Cat traction products are available in package quantities that will give you the best combinations for 129-in. and 137-in. tracks.

### RECOMMENDED STUD LENGTH (IN.)

TRACK LUG HEIGHT	WOODY’S STUD LENGTH	STUD BOY STUD LENGTH
1.000	1.075	1.080
1.250	1.325	1.375
1.352	1.325	1.375
1.375	1.450	1.500
1.500	1.575	
1.600	1.575	

For stud lengths 1.325 in. and longer, we recommend the use of a Big Nut (page 138) or Power Tower Support Nut (page 139). Cobra 1.352-in. tracks have a standard lug height of 1.25 in. The overall lug height including the extended “towers” is 1.352 in. Because the towers will flex, Cobra 1.352-in. tracks use the same stud length as a 1.25-in. track.



## ’05-’19 ARCTIC CAT SADDLELESS SKIS

NOTE: The accessory wearbars listed above use a four-bolt stud pattern. When using accessory wearbars on ’05 and newer models with Saddleless Skis and a three-bolt stud pattern, it will be necessary to drill another mounting hole in the ski.

### SINGLE RUNNER WEARBARS (PAIR)

#### SINGLE RUNNER

- » Ideal on ice and hardpack, but works well anywhere
- » May provide a noted speed increase compared with a dual or Shaper wearbar
- » Sold in pairs

3639-309 HARDWELD WEARBAR

3639-310 4-IN. CARBIDE WITH HARDWELD

3639-311 6-IN. CARBIDE WITH HARDWELD

3639-312 8-IN. CARBIDE WITH HARDWELD

3639-313 10-IN. CARBIDE WITH HARDWELD



#### ACE™ WEARBARS

- » Utilizes a preformed, square steel bar with a tall, aggressive profile
- » Provides excellent control
- » Sold in pairs

6639-850 6-IN. CARBIDE

6639-799 8-IN. CARBIDE



#### SHAPER™ WEARBARS

- » Offers more precise turning than conventional wearbars
- » 20% lighter than round wearbars
- » Sold in pairs

4639-949 4.5-IN. CARBIDE

4639-950 6-IN. CARBIDE

4639-951 9-IN. CARBIDE



### DUAL WEARBARS (EACH)

#### STAGGERED WEARBARS

- » Features a single carbide runner and an offset hardweld runner
- » Lighter steering than a dual carbide runner
- » Reduces darting and plugging
- » Available with a standard (.312) or aggressive (.500) bar
- » Sold individually

2703-598 4-IN. CARBIDE (RH) 3-BOLT (STANDARD)  
2703-599 4-IN. CARBIDE (LH) 3-BOLT (STANDARD)  
2603-988 4-IN. CARBIDE (RH) 3-BOLT (AGGRESSIVE)  
2603-989 4-IN. CARBIDE (LH) 3-BOLT (AGGRESSIVE)

2603-930 4-IN. CARBIDE (RH) 4-BOLT (AGGRESSIVE)  
2603-931 4-IN. CARBIDE (LH) 4-BOLT (AGGRESSIVE)



#### DOOLY™ TWIN CARBIDE WEARBARS

- » Great, all-trail performance
- » Reduces darting
- » Features two carbide runners
- » Sold individually

5639-879 HARDWELD WEARBAR

3639-343 4-IN. CARBIDE WITH HARDWELD

3639-344 6-IN. CARBIDE WITH HARDWELD

3639-345 8-IN. CARBIDE WITH HARDWELD



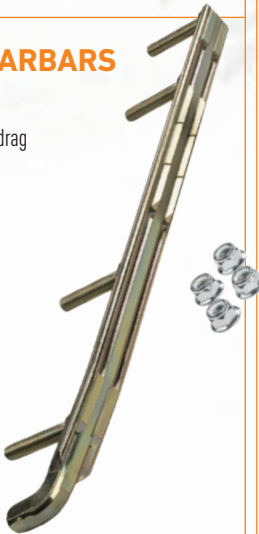
#### DEUCE™ TWIN CARBIDE WEARBARS

- » The best-performing dual runner available
- » Reduces darting and eliminates dual-runner-type drag
- » Durable one-piece design
- » Features two carbide runners
- » Sold individually

5639-251 4.5-IN. CARBIDE WITH HARDWELD

5639-252 6-IN. CARBIDE WITH HARDWELD

5639-253 8-IN. CARBIDE WITH HARDWELD



## CAUTION

- » To protect the tunnel from possible damage from the studs, it is recommended that a Tunnel Protector Kit be installed on those models not so equipped
- » A Short Snowflap is required when installing studs on ’07-’09 F Series; ’09 Z1, Z1 Turbo; ’09-’11 Crossfire and CFR
- » See your dealer for additional information

## STUD PLACEMENT

- » DO NOT use studs that are longer than recommended
- » DO NOT place studs in line with the heat exchanger or tunnel protector strip, and factor in the amount of suspension travel to avoid tunnel damage
- » Studs MUST NOT extend more than 3/8-in. beyond the rubber track lugs
- » Verify adequate clearance between the track, tunnel and heat exchanger to avoid serious damage
- » Confirm that your machine has adequate tunnel protection before installing studs
- » Use only Arctic Cat-approved Stud Templates shown on page 139
- » The length of carbide and number of studs must coordinate to result in balanced handling and proper control



TRACTION & CONTROL

ARCTIC CAT TRACTION BY WOODY'S

GRAND MASTER® (SINGLE-PLY) TRACTION KITS

- » Studs feature a larger head design required for use on models with a single-ply track
- » Includes studs, support plates, big nuts, template, stud drill and track marker
- » 60° carbide, 5/16-in. thread, 1.20-in. head, 1.50-in. support plates

'18-'19 BC 7000 XT 20-IN. X 154-IN. X 1.60-IN. 2.86 P (1.575-IN. STUDS)

7639-741 108/PK

'18-'19 NOR 3/6000 15-IN. X 154-IN. X 1.60-IN. 2.86 P (1.575-IN. STUDS)

7639-743 108/PK

'11-'17 BC XT 154-IN. X 1.375-IN. 2.86 P (1.450-IN. STUDS)

5639-626 108/PK

SINGLE-PLY TRACK WARNING

WHEN INSTALLING STUDS ON A SINGLE-PLY TRACK, IT IS IMPORTANT TO USE ARCTIC CAT-APPROVED STUDS AND BACKER PLATES WITH THE PROPER DIAMETER. IF APPROVED STUDS AND BACKER PLATES ARE NOT USED, STUDS COULD TEAR FREE OF THE TRACK, CAUSING POSSIBLE INJURY OR EVEN DEATH.

SINGLE-PLY TRACKS

'16-'19 BC 7000 XT, 7000 XT GS  
'18-'19 NOR 3/6000  
'16-'19 PTA 7000 XT LTD  
'15-'18 BC 2000 LT  
'15-'18 BC 2000 XT, 2000 XTE  
'15 BC 5000 XT, 5000 XT GS  
'14-'15 XF 6/7/8/9000 CC  
'14-'15 XF 6/7/8/9000 CT  
'12-'13 XF 800, 1100, 1100T  
'10-'14 BC 570  
'11-'14 BC 570 XT, Z1 XT

2-PLY TRACKS

'15-'19 LYNX 2000  
'15-'19 LYNX 2000 LT  
'16-'19 PTA 3000  
'18-'19 PTA 6000  
'15-'19 PTA 7000  
'17-'19 TC 9000  
'17-'19 XF CC 6/8/9000  
'17-'19 ZR 3000  
'14-'19 ZR 4/6/7/8/9000 LXR, SP, RR  
'16-'18 XF CT 6/7/9000  
'16-'18 XF CTK 6/7/8/9000  
'16-'17 BC 3000 LT  
'12-'13 F 800, 1100, 1100T  
'11-'14 SP 500  
'09-'14 T570, TZ1

GOLD DIGGER® TRACTION MASTER® (2-PLY) TRACTION KITS

- » Includes studs, round support plates, big nuts, template, stud drill and track marker

'16-'18 XF CTK 137-IN. X 1.60-IN. 2.86 P (1.575-IN. STUDS)

7639-069 96/PK

7639-070 144/PK

SIGNATURE SERIES™ (2-PLY) TRACTION KITS

- » Includes studs, support plates, standard or big nuts, template, stud drill and track marker

'14-'19 ZR SP, RR; '13 F SP 129-IN. X 1.25-IN. 2.86 P (1.325-IN. STUDS)

WITH SQUARE SUPPORT PLATES

6639-133 90/PK

6639-134 135/PK

WITH ROUND SUPPORT PLATES

6639-858 90/PK

6639-859 135/PK

'16-'19 ZR, SP, RR; '17-'18 TC; '14-'15 XF LXR, XF SP 137-IN. X 1.25-IN. 2.86 P (1.325-IN. STUDS)

WITH SQUARE SUPPORT PLATES

6639-454 96/PK

6639-455 144/PK

WITH ROUND SUPPORT PLATES

6639-856 96/PK

6639-857 144/PK

'17-'19 ZR 3000; '15-'17 ZR 4000 LXR; '14-'16 ZR 5000 LXR; '13 F 129-IN. X 1.00-IN. 2.86 P (1.075-IN. STUDS)

WITH SQUARE SUPPORT PLATES

6639-131 90/PK

6639-132 135/PK

WITH ROUND SUPPORT PLATES

6639-860 90/PK

6639-861 135/PK

'16-'19 PTA 7000; '16-'18 XF CT 7000 146-IN. X 1.25-IN. 2.86 P (1.325-IN. STUDS)

WITH ROUND SUPPORT PLATES

7639-564 102/PK

GOLD DIGGER TRACTION MASTER (2-PLY) 60° CARBIDE, 5/16-in. THREAD, 1-in. HEAD

- » The industry-leading and best-selling trail stud
- » Outstanding penetration and durability on ice and hardpack from a 60° carbide tip
- » Support plates sold separately



SIGNATURE SERIES STAINLESS STEEL (2-PLY) 60° CARBIDE, 5/16-in. THREAD, 15/16-in. HEAD

- » Woody's proven push-through stainless steel stud at a competitive price
- » Support Plates sold separately



DIGGER® (2-PLY) SUPPORT PLATES

- » Lightweight aluminum offers serious support
- » Added strength from crowned profile
- » 1.250-in. square; 1.375-in. round

DOUBLE DIGGER® (2-PLY) SUPPORT PLATES

- » Unmatched support from durable aluminum



BIG NUT

- » Heavy-duty, lightweight aluminum
- » Stronger and more supportive than standard lock nuts
- » Recommended when using studs 1.325 in. and longer



ARCTIC CAT TRACTION BY STUD BOY

POWER POINT™ (2-PLY) TRACTION KITS

- » Includes studs, support plates, standard or Power Tower Support Nuts, template, drill and track marker

'14-'19 ZR SP, RR; '13 F SP 129-IN. X 1.25-IN. 2.86 P (1.375-IN. STUDS)

6639-141 90/PK

6639-142 135/PK

'16-'19 ZR SP, RR; '17-'18 TC; '14-'15 XF LXR, XF SP 137-IN. X 1.25-IN. 2.86 P (1.375-IN. STUDS)

6639-458 96/PK

6639-459 144/PK

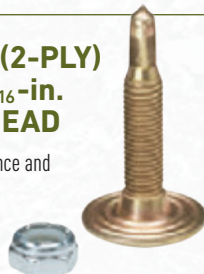
'17-'19 ZR 3000; '15-'17 ZR 4000 LXR; '14-'16 ZR 5000 LXR; '13 F 129-IN. X 1.00-IN. 2.86 P (1.080-IN. STUDS)

6639-139 90/PK

6639-140 135/PK

POWER POINT™ (2-PLY) 60° CARBIDE, 5/16-in. THREAD, 1-in. HEAD

- » Offers lightweight performance and excellent durability
- » Track-trapping head design
- » Backers sold separately



POWER PLATE™ BACKERS

- » Innovative, nearly unbendable design
- » Excellent stud support
- » 1.270 in.



POWER TOWER SUPPORT NUTS

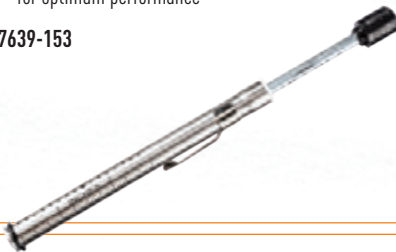
- » Lightweight, durable stud support
- » Recommended when using studs 1.375 in. and longer



TRACK TENSION TOOL

- » Maintain your track tension for optimum performance

7639-153



STUD TEMPLATES

- » Available in patterns perfectly matched to your riding style

6639-532 '14-'19 ZR 129-IN.; '16-'19 ZR 137-IN., PTA 146-IN.; '17-'19 TC 137-IN.; '16-'18 XF CTK 137-IN., XF CT 146-IN.; '14-'15 XF 137-IN.; '13 F 129-IN. 2.86 P (2-PLY)



4639-443 '15-'19 LYNX; '12-'14 F5, F570; '12 F 128-IN.; '11-'14 SP 500; '07-'11 F; '09-'11 CFR, Z1 128-IN. 2.52 P (2-PLY)

5639-160 '15-'19 LYNX LT; '08-'14 T570, TZ1, TZ1 LXR; '10-'11 Z1 TURBO EXT; '11 F8 EXT 144-IN. 2.52 P (2-PLY)

5639-461 '15-'18 BC 2000 LT; '09-'10 BC XT 156-IN. (2-PLY); '10-'14 BC 570 151-IN. (SINGLE-PLY)

STUD DRILL

- » Cuts clean for efficient, perfect cutting

1639-629



TRACK MARKER

- » Ensures track pattern aligns perfectly with stud template

1639-520

TUNNEL PROTECTOR KIT

- » Required when installing studs on models listed below

7639-138 '18-'19 ZR, XF CC 6/8000; '18 XF CTK 6/8000; '17-'19 ZR, TC 9000; '17-'18 XF CTK 9000, ZR R XC 6000; '17 ZR RS 129-IN.-137-IN.

6639-075 '14-'17 ZR 6/8000; '15-'17 ZR 4000; '14-'16 ZR 5/9000; '13 F 129-IN.

6639-118 '16-'17 ZR 6/8000; '17 ZR 5000; '16 ZR 9000; '14-'15 XF, XF CC, XF CT 6/8/9000; '13 XF, XF CT 137-IN.  
7639-578 '16-'17 XF CTK 6/8000; '16 XF CTK 9000 137-IN.  
6639-178 '12 F 800, 1100, 1100T

6639-179 '12 XF 800, 1100, 1100T

4639-771 '15-'19 LYNX, LYNX LT; '15-'18 BC LT 2000; '08-'14 F570, T570; '09-'14 BC 570

5639-143 '15 BC 5000 XT, BC 5000 XT GS; '09-'14 BC Z1 XT; '12-'14 BC Z1 XT GS



7639-138



# GENERAL MAINTENANCE



5639-874

4639-766

CAT CADDY


- » Superior mobility from 2.5-in. swivel casters
- » Includes two ski dollies and a track dolly

PLASTIC

5639-873 BLACK | 5639-874 GREEN

ALUMINUM

4639-766 BLACK



RATCHET TIE-DOWNS

- » Spring-loaded retainer clips prevent S-hooks from falling off
- » Comfortable ratchet-handle grip
- » Large grab handle for easy length adjustment
- » 1.125 in. x 102 in., 1,200-lb. rating; sold in pairs

7639-183 BLACK



TOW STRAP

- » Safe, easy towing with even weight distribution
- » Durable nylon strap
- » Handy storage pouch included
- » For towing disabled vehicle, never use to tow or transport people; use a solid hitch when towing or transporting people

4639-247



DELUXE TIE-DOWNS

- » Protects against scratching with integrated soft end loop
- » Heavy-duty nylon straps with dual S-hook retainer clips
- » 1.125 in. x 78 in., 1,200-lb. rating; sold in pairs

7639-182 BLACK/GREEN



TOW ROPE

- » Easy-attach spring-clip buckles
- » Heavy-duty nylon rope
- » For towing disabled vehicle, never use to tow or transport people; use a solid hitch when towing or transporting people

0636-577



RACING TAPE

- » Extra strong for any application
- » 2-in. x 60-yd. roll

4639-579 BLACK

4639-580 GREEN

5639-103 ORANGE




STANDARD TIE-DOWNS

- » Secures sled to trailer with heavyweight nylon straps
- » 1 in. x 69 in., 1,000-lb. rating; sold in pairs

7639-181 BLACK

# BATTERY CHARGERS



0.8A BATTERY CHARGER

- » The ideal maintenance charger for 12V batteries
- » Fully automatic for charging and maintenance
- » Takes its own readings and begins to charge
- » Once finished charging, will switch to a maintenance phase
- » Features a patented method for reconditioning sulfated batteries
- » Spark-free, making connection safer and easier
- » Extends battery life
- » Includes alligator clips and ring terminal leads
- » 12V, 0.8A

7639-503



ADDITIONAL BATTERY LEADS

- » Comfort indicator features a three-LED battery condition indicator

5639-421 ALLIGATOR CLIPS



5639-420 RING TERMINALS

5639-485 COMFORT INDICATOR — RING TERMINALS



4.3A BATTERY CHARGER

- » A great all-around charger every household should have
- » Special cold-weather performance and adapted AC and DC cables to handle severe cold down to -22°F (-30°C)

FEATURES FOUR MODES:

LOW CURRENT MODE

for smaller 12V batteries used in snowmobiles and ATV/UTV

HIGH CURRENT MODE

for automotive or marine applications

WINTER MODE

aimed at charging and maintenance in cold weather

RECONDITIONING MODE

for deeply discharged batteries

- » Fully automatic for charging and maintenance
- » Takes its own readings and begins to charge
- » Once finished charging, will switch to a maintenance phase
- » Features a patented method for reconditioning sulfated batteries
- » Spark-free, making connection safer and easier
- » Extends battery life
- » Includes alligator clips and ring terminal leads
- » 12V, 4.3A

7639-504



2A BATTERY MAINTAINER

- » Fully automatic maintainer for snowmobile and ATV/UTV batteries
- » Automatic voltage detection
- » Reverse hook-up protection
- » Includes alligator clips and ring terminal leads
- » 12V, 2A

7639-961



BATTERY JUMP PACK

- » Quickly start your snowmobile or ATV/UTV
- » Lightweight, long-lasting 8,000 mAh lithium-ion power source
- » Features LCD display, two USB charging ports and a powerful three-mode LED light
- » Cranking current: 400A peak, 200A cranking
- » Includes smart cables, AC and 12V car charging adapter

7639-835

JUMP PACK POUCH

- » Padded storage bag for the Battery Jump Pack

8639-035



BELTS

- » Custom fit to match each Arctic Cat sled and specific use
- » Better contact with clutch surface and faster acceleration from double cogs
- » Increased belt life by running cooler than aftermarket belts
- » Premium reinforced with Aramax® aramid fibers for strength and durability
- » Increased power transmission with less slip
- » Kevlar® drive belts available for F, M, ZR and XF models, which dramatically extend belt life and sustain belt length better than traditional cords

**NOTE:** Proper break-in period required.

**PREMIUM ARCTIC CAT “EXTENDED-LIFE” ORIGINAL EQUIPMENT REPLACEMENT BELTS**

Don’t settle for anything less than a drive belt built specifically for your sled. Proven through extensive lab and field testing, original equipment Arctic Cat replacement belts are precision-engineered for each Arctic Cat snowmobile.

**CUSTOM-ENGINEERED FIT**

While non-OEM aftermarket belts offer “one construction fits all,” Arctic Cat Research & Development custom engineers each genuine Arctic Cat belt to match the specific performance characteristics of your sled. This produces the best combination of strength, durability and responsiveness for lower-horsepower, fan-cooled sleds all the way up to high-horsepower muscle sleds. Each one is built using only state-of-the-art materials, incorporating precision manufacturing techniques to meet exacting tolerances.

**TOP & BOTTOM COGS**

Arctic Cat original equipment belts are double cogged, so more of the belt contacts the clutch surfaces. This results in faster acceleration, maximum efficiency and superb overall performance. Double-cog design provides structure while adding surface area for greater cooling and longer life. In fact, our belt runs cooler than flat-top aftermarket belts.

**ARAMAX HIGH-MODULUS ARAMID-FIBER TENSILE MEMBER**

The Aramax inner cord provides incredible strength and durability for high-horsepower, high-performance sleds. In addition, each belt is chemically treated for maximum power transmission and length stability.

**HIGH-PERFORMANCE PREMIUM COMPOUNDS**

Arctic Cat’s OEM belts incorporate advanced “premium” compound materials that ensure optimum belt performance under all riding conditions. The advanced aramid-fiber-loaded rubber compound resists wear and delivers consistent power while minimizing slippage over a broad range of operating temperatures. The thicker, highly flexible design increases grip to clutch surfaces for increased power transmission.

**ARCTIC CAT KEVLAR DRIVE BELTS**

These ultimate-performance Arctic Cat Kevlar drive belts are custom engineered for F, M, ZR and XF models. Extended-life belts feature top- and bottom-molded cog construction and high-performance compounds. Inside, the Kevlar cord provides increased belt life. Please note that proper belt “break-in” is required.



OIL & CARE

**C-TEC2™ SYNTHETIC OIL**

The C-TEC2 revolutionary clean-burning engine technology demands an entirely unique oil formulation. This lubrication system effectively delivers oil where it is required — as a result using significantly less oil compared with traditional 2-cycle engines. This technology requires a unique viscosity and blend of additives and base stocks. After several years of intense testing, numerous formulations, thousands of dyno hours and hundreds of thousands of field test miles, we landed on this unique oil technology.

- » The ONLY oil recommended for the C-TEC2 engine, but approved for ALL Arctic Cat 2-cycle engines
- » Reduction in recoil pull-effort during cold weather starting
- » Convenient C-TEC2 oil packaging provides easier pourability and less waste
- » Fully synthetic formulation provides ultimate engine protection
- » Detergent additives maximize Arctic Power Valve™ and engine cleanliness
- » Smokeless formulation burns extremely clean with a fresher scent

**7639-840** 1 GALLON | **6639-521** 2.5 GALLON  
**8639-118** 1 QUART



**APV™ SYNTHETIC OIL**

- » Outstanding performance for all non-C-TEC2 Arctic Cat 2-cycle engines
- » Protects against engine wear with excellent lubricity
- » Provides excellent Arctic Power Valve cleanliness
- » Smokeless formulation burns clean
- » Helps prevent piston scuffing, varnish formation and deposit buildup

**4639-349** QUART  
**5639-469** GALLON  
**4639-347** 2.5 GALLON



**FORMULA 50**

- » Recommended for non-Arctic Power Valve 2-cycle engines
- » Performs well over a wide range of operating temperatures
- » Minimizes engine wear
- » Prevents rust/deposit formation

**5639-475** QUART  
**5639-476** GALLON  
**5639-477** 2.5 GALLON



**C-TEC4™ SYNTHETIC OIL**

- » Provides superior performance in ALL operating conditions including in the extreme cold
- » Synthetic base stocks offer high lubricity that protects engine from wear and scuffing
- » Exclusive formulation includes additives that help prevent deposit formations, ring sticking and engine wear

**6639-524** QUART | **6639-525** GALLON  
» For use in ALL Arctic Cat 4-cycle snowmobiles including turbo engines

**6639-528** SYNTHETIC OIL CHANGE KIT FOR THE 1056CC TWIN ENGINE  
» Includes one gallon of synthetic C-TEC4 oil, oil filter O-ring washer and disposable funnel

**6639-529** SYNTHETIC OIL CHANGE KIT FOR THE 1049CC AND 998CC (2017 9000) TRIPLE ENGINE  
» Includes one gallon of synthetic C-TEC4 oil, oil filter, gaskets and disposable funnel

**7639-042** SYNTHETIC OIL CHANGE KIT FOR THE 700CC TWIN ENGINE  
» Includes one gallon of synthetic C-TEC4 oil, oil filter and disposable funnel





## OIL &amp; CARE



### SYNTHETIC CHAIN LUBE

- » Designed for Arctic Cat chain-driven snowmobiles
- » Synthetic formulation helps protect against wear at extreme temperatures
- » Inhibits rust and corrosion during periods of non-use or extended storage

5639-038 8 OZ.  
6639-539 15 OZ.  
6639-117 2.5 GALLON



### ARCTIC CAT CHAIN LUBE

- » Maximizes performance and reduces friction
- » Coats sprockets and chain rollers
- » Prevents rust, wear and corrosion
- » Extends chaincase component life
- » Protects during periods of non-use

4639-363 8 OZ. | 6639-538 15 OZ.  
1639-247 2.5 GALLON



### ACT DRIVE FLUSH FLUID

- » Always use while flushing ACT™ Gearcase Fluid

4639-333 6 OZ.  
5639-847 GALLON



### SYNTHETIC ACT GEARCASE FLUID

- » Specially formulated for the ACT drive system
- » Low-shear formulation offers exceptional lubrication at low temps
- » Protects against wear and corrosion in ACT drive systems with reverse

4639-361 3 OZ. (NON-REVERSE)  
4639-628 12 OZ. (REVERSE)  
5639-219 15 OZ. (ACT ACER REVERSE)  
7639-080 27.1 OZ.  
5639-632 GALLON



### CHAIN LUBRICANT

- » Minimizes dirt buildup
- » Helps keep chain links moving freely

0436-903 12 OZ.



### SYNTHETIC SHOCK OIL

- » Superior performance under extreme racing conditions
- » Inhibits fading, reduces wear and protects against corrosion

4639-368  
MEDIUM WEIGHT — QUART



### SEMI-SYNTHETIC SHOCK OIL

- » Engineered with a high viscosity index (VI) formulation
- » Provides superior, consistent performance in severe operating and racing conditions
- » Protects against wear, foaming, oxidation and corrosion

5639-530 QUART



### ARCTIC CAT SHOCK OIL

- » Lends consistent performance to floating piston gas shocks
- » Improves ride quality under demanding conditions

4639-366 QUART



### ARCTIC CAT ANTIFREEZE - 60/40 EXTENDED LIFE

- » Protects against freezing to -62°F
- » Extended life has 2.5-year service life
- » Premixed and ready to pour

6639-916 GALLON



### FUEL INJECTOR AND CARBURETOR CLEANER

- » Provides peak performance
- » Cleans debris from vital fuel system/injectors
- » Greatly helps avoid repairs

0436-904



### ARCTIC EXTREME LOW TEMP GREASE

- » Premium synthetic base oils make Arctic Cat All-Temp Grease perform in extreme winter conditions
- » Lithium complex thickener provides excellent water resistance and adhesion to parts

7639-517



### ENGINE STORAGE PRESERVER

- » Protects internal engine parts during storage
- » Aids in corrosion prevention

0436-888



### FUEL DE-ICER

- » Prevents system failure at the coldest of temps
- » Safe on internal parts
- » Water-absorbing isopropyl blend

0436-906



### FUEL STABILIZER

- » Prevents fuel breakdown, jet clogging and corrosion
- » Suggested for use in stored sleds

0436-907



### DOT 4 BRAKE FLUID

- » Premium fluid designed with corrosion and oxidation inhibitors
- » Optimizes brake performance if moisture is introduced into the brake system

5639-848



### CAT CLEANER

- » Removes oil, grease and grime from vinyl, metal and paint
- » Sprays on and wipes off quickly
- » Won't alter finishes

4639-371



### SPRAY AND RINSE CLEANER

- » Scrub-free cleanser eliminates grease and dirt

5639-872 | 5639-789



### HIGH TEMP RACING BRAKE FLUID

- » The high boiling point of Arctic Cat DOT 4 Racing Fluid means consistent performance in demanding race conditions
- » For use in all applications where DOT 4 brake fluid is recommended

7639-518



### INSTANT DETAILER

- » Polishes and protects
- » Showroom-quality shine
- » Resists finger markings
- » Greaseless finish

5639-849







A

ACCESSORIES

Bags ..... 98–101

Battery Chargers ..... 141

Belts ..... 142

Covers ..... 94–97

Custom ..... 112–117

General Maintenance ..... 140

Mountain ..... 124–131

Oil & Care ..... 143–151

Performance ..... 121–123

Touring ..... 102–109

Tracks ..... 134–135

Traction & Control ..... 136–139

Utility ..... 132–133

Windscreens ..... 110–111

ZR 200 ..... 118–120

ACT FLUIDS ..... 144

ARCTICWEAR

Casual Outerwear ..... 42–43

Crossover/Mountain ..... 26–31

Flex Liners ..... 32–33

High Performance ..... 14–25

Layers

Base Layers ..... 38–39

Mid-Layers ..... 40–41

Pants & Bibs

Men ..... 34–35

Women ..... 36–37

Race Edition ..... 6–13

Technology ..... 4–5

Women ..... 8–9, 11, 25, 30, 32–33, 36–37, 39–43

Youth ..... 45–49

ANTIFREEZE ..... 144

AVALANCHE GEAR

Avalanche Transceivers ..... 128

Avalanche Airbags ..... 128

BC Link Radios ..... 129

Shovels ..... 127

B

BACK SUPPORT ..... 64

BAGS, SNOWMOBILE

Backpacks ..... 127, 129

Bag Heater Kit ..... 100

Cargo ..... 101

Gear ..... 101, 105, 126

Goggle Holder ..... 100

Handlebar ..... 100, 119

Mountain ..... 99

Saddlebags ..... 99

Tank ..... 101

Tunnel ..... 98–99, 118

Windshield ..... 98

BAGS, TRAVEL / CASUAL

Backpacks ..... 62–63

Duffle ..... 62–63

BAGS, TRAVEL / CASUAL (cont.)

Helmet Bag ..... 62–63

Roller ..... 62–63

BALACLAVAS

Adult ..... 56

Youth ..... 49

BASE LAYERS ..... 38–39

BATTERY

Chargers ..... 141

Jump Pack ..... 141

Leads ..... 141

Maintainer ..... 141

BEANIES

Adult ..... 66, 85, 86–87

Youth ..... 67, 87

BEARCAT

Bags ..... 98–101

Handlebar ..... 100

Saddle ..... 99

Gear ..... 101

Cargo ..... 101

Windshield ..... 98

Battery Chargers ..... 141

Belts ..... 142

Bumpers

Front ..... 132

Coolant Heater ..... 109

Covers ..... 94

Hand Grips ..... 113

Hitch Kit ..... 108

Mirrors ..... 117

Muffs ..... 106

Oil & Care ..... 143

Rack, Rear ..... 132

Radiator Guard ..... 132

Seat

2-Up Kit ..... 107

Stud Templates ..... 139

Traction Kits ..... 138

Tracks ..... 138

Tunnel Protector Kit ..... 139

Winch Kit ..... 133

BELTS ..... 142

BIBS & PANTS

Advantage ..... 34, 36, 47

Champion ..... 35

Crossover ..... 35, 37

Men ..... 9, 10, 34–35

Mountain ..... 31

Premium ..... 34, 36

Sno-Cross® ..... 10

Team Arctic ..... 9, 44, 47

Women ..... 9, 36–37

Youth ..... 44, 47

BOOTS

Adult ..... 60–61

Youth ..... 49

BRAKE FLUID ..... 145

BUMPERS

Front ..... 102, 125, 132

Rear ..... 103, 125

C

CAPS

Adult ..... 66, 82–84

Youth ..... 67

CARBURETOR CLEANER ..... 145

CARGO BOX ..... 101, 104

CASUAL OUTERWEAR ..... 42–43

CAT'S PRIDE ..... 147

CHAIN LUBRICANT ..... 144

CHEST PROTECTOR ..... 64

CLEANERS ..... 145

CLUTCH KITS ..... 121

COLLECTIBLES ..... 88–91

COOLANT HEATER ..... 109

COVERS, SLED ..... 94–97

D

DECALS ..... 91

DETAILER ..... 145

DOLLIES ..... 140

DRINKWARE ..... 89

E

ENGINE PRESERVER ..... 145

F

FACE MASKS

Adult ..... 56

Youth ..... 49

FLAGS ..... 67, 89

FLANNEL SHIRTS ..... 70, 75

FLEECE ..... 33, 41

FLEX LINERS ..... 32–33

FOX SHOCKS ..... 122–123

FUEL

De-icer ..... 145

Injector Cleaner ..... 145

Stabilizer ..... 145

FUEL CAN ..... 114

G

GARAGE COLLECTION ..... 90

GAS CAPS ..... 113

GEARCASE FLUID ..... 144

GLASSWARE ..... 89

GLOVES

Adult ..... 57–59

Youth ..... 49

GOGGLES

Adult ..... 54–55

Youth ..... 48

GOGGLES (cont.)

Lens Cleaner/Defogger ..... 55

Replacement Lenses ..... 55

GREASE, EXTREME LOW TEMP ..... 145

GUARDS

Flex-Tec ..... 112, 119

Hand ..... 119

Procross ..... 112

Team Arctic ..... 112

H

HAND GUARDS ..... 119

HANDLEBAR

Bar Risers ..... 131

Grips ..... 113

Mountain Handlebar ..... 131

HATS

Adult ..... 66, 82–87

Youth ..... 67

HEADGEAR

Adult ..... 56

Youth ..... 49

HEADLIGHT

LED Headlight ..... 109

HEATED SHIELD ADAPTER ..... 109

HEATED SHIELD OUTLET ..... 109

HELMETS

Adult ..... 50–53

Youth ..... 48

HITCH KITS ..... 108

HOODIES

Infant ..... 91

Men ..... 71–72

Toddler ..... 90

Women ..... 76, 77

Youth ..... 79

I

ICE SCRATCHERS ..... 130

INFANT APPAREL ..... 91

J

JACKETS

Men

Crossover/Mountain ..... 26–31

High Performance ..... 14–25

Flex Liners ..... 32–33

Race Edition ..... 6–13

Tall Sizes ..... 8, 10–11, 29, 32–33

Women ..... 8, 11, 25, 30, 33

Youth ..... 44–47

JERSEYS

Adult ..... 66, 73

Youth ..... 67, 78

JUGS, UTILITY ..... 126

K

KNIT CAPS

Adult ..... 66, 85–87

Youth ..... 67, 87

L

LAYERING GUIDE ..... 38

LAYERS, BASE ..... 38–39

LAYERS, MID- ..... 40–41

LED HEADLIGHT ..... 109

LUBRICANTS ..... 144

LUGGAGE

Backpacks ..... 62–63

Duffle ..... 62–63

Helmet Bag ..... 62–63

Roller ..... 62–63

M

M, M HC, MC A1

Bags

Handlebar ..... 100

Tunnel ..... 99, 126

Windshield ..... 98

Bar Risers ..... 131

Battery Chargers ..... 141

Belts ..... 142

Bumpers

Front ..... 102, 125

Rear ..... 125

Covers ..... 94–97

Gas Cap ..... 113

Goggle Holder ..... 100

Hand Grips ..... 113

Hand Guards ..... 112

Heated Shield Outlet ..... 109

Hitch Kit ..... 108

Ice Scratchers ..... 130

Mirrors ..... 117

Mountain Handlebar ..... 131

Muffs ..... 106

Oil & Care ..... 143

Rack, Rear ..... 114, 127

Rail Cap Wheel Kit ..... 131

Rear Wheel Kit ..... 121

Running Boards ..... 124

Shocks ..... 122–123

Skid Plates ..... 116

Skis ..... 122–123

Snow Mesh ..... 116

Snowflap ..... 117

Speedrack Kit ..... 104

Switch Guards ..... 130

Tank Pads ..... 113

Telescopic Steering Post ..... 131

Tow Hitch ..... 108

Tracks ..... 134–135

Track Rack System ..... 126

Tunnel Flares ..... 117

M, M HC, MC A1 (cont.)

Vented Side Panel ..... 130

Wear Strips ..... 116

Wearbars ..... 137

Wheel Kit ..... 121, 131

Windshields ..... 110, 111

MEN

Outerwear ..... 6–35

Sportswear ..... 68–73

Boots ..... 60–61

Layers ..... 38–41

MID-LAYERS ..... 40–41

MIRRORS ..... 117

MITTS

Adult ..... 58–59

Youth ..... 49

MUGS ..... 88

N

NO FOG MASKS ..... 56

O

OIL & CARE

2-Cycle Synthetic Oil ..... 143

4-Cycle Synthetic Oil ..... 143

Antifreeze ..... 144

Brake Fluid ..... 145

Cat Cleaner ..... 145

Grease ..... 145

Shock Oil ..... 144

ONESIES ..... 81

P

PANTERA

Bags

Handlebar ..... 100

Saddle ..... 99

Windshield ..... 110–111

Battery Chargers ..... 141

Belts ..... 142

Bumpers

Front ..... 102

Coolant Heater ..... 109

Covers ..... 94, 97

Goggle Holder ..... 100

Hand Grips ..... 113

Hitch Kit ..... 108

Mirrors ..... 117

Muffs ..... 106

Oil & Care ..... 143–145

Skid Plates ..... 116

Stud Templates ..... 139

Traction Kits ..... 138–139

Tracks ..... 134–135

Wearbars ..... 137

Wind Deflectors ..... 117

Windshields ..... 110–111



INDEX

**PANTERA (cont.)**

PASSENGER MUFFS ..... 106

PASSENGER SEATS

    2-Up Seat Kit ..... 107

    Heated Seat Kit ..... 109

    Passenger Seat ..... 132

POLO SHIRT ..... 69

PROTECTION ..... 64

**R**

RACK SYSTEMS

    SpeedRack II ..... 104-105

    Track Rack System ..... 126

RACK STRAP ..... 114

RACKS, REAR ..... 114, 118, 127, 132

RADIATOR GUARD ..... 132

RADIO, BC LINK ..... 129

RAIL CAP WHEEL KIT ..... 131

RECOIL HANDLE ..... 113

RIDEGEAR

    Bags ..... 62-63

    Boots ..... 60-61

    Gloves ..... 57-59

    Goggles ..... 54-55

    Headgear ..... 56

    Helmets ..... 50-53

    Protection ..... 64

    Youth ..... 48-49

RUNNING BOARDS ..... 119, 124

**S**

SAW, POCKET ..... 127

SHIRTS

    Infant ..... 81

    Men ..... 68-73

    Toddler ..... 80

    Women ..... 74-77

    Youth ..... 78-79

SHOCKS

    Digital Pump ..... 123

    Guards ..... 122

    Ski ..... 122-123

    Track ..... 123

SHOVELS ..... 127

SKIS 115

SKI HANDLES ..... 115

SKID PLATES ..... 116

SNOW MESH ..... 116

SNOWFLAPS ..... 117

SOCKS ..... 39

SPEEDRACK II ..... 104-105

SPORTSWEAR

    Caps ..... 82-84

    collectibles ..... 88-91

    Infant ..... 81

    Jerseys ..... 63, 73

    Knit Hats ..... 85-87

SPORTSWEAR (cont.)

    Men ..... 66-73

    Toddler ..... 80

    Tucker Hibbert Collection ..... 65-67

    Women ..... 74-77

    Youth ..... 78-79

STUDS ..... 120, 138-139

    Woody's ..... 138

    Stud Boy ..... 139

    Stud Drill ..... 139

    Stud Templates ..... 139

    Track Marker ..... 139

    Tunnel Protector Kit ..... 139

SUITS, ONE-PIECE

    Mountain ..... 31

    Youth ..... 47

SUNGLASSES ..... 88

SUSPENSION BLOCKS ..... 113

SWEATPANTS

    Infant ..... 81

    Men ..... 72

    Women ..... 76

    Youth ..... 78

SWEATSHIRTS & LONG-SLEEVE SHIRTS

    Infant ..... 81

    Men ..... 66, 70-73

    Toddler ..... 80

    Women ..... 75-77

    Youth ..... 67, 78-79

SWITCH GUARDS ..... 130

**T**

T-SHIRTS

    Infant ..... 81

    Men ..... 39, 66, 68-69

    Toddler ..... 80

    Women ..... 39, 66, 74-75

    Youth ..... 67, 78-79

TANK PADS ..... 113

TAPE, RACING ..... 140

TEKVESTS ..... 64

TETHER SWITCH ..... 109

TIE-DOWNS ..... 140

TODDLER APPAREL ..... 80

TOW HITCH ..... 108

TOW STRAPS/ROPE ..... 140

TRACKS ..... 134-135

TRACK RACK SYSTEM ..... 126

TUCKER HIBBERT ..... 11, 47, 57, 65-67

TUNNEL FLARES ..... 117

TUNNEL PROTECTOR ..... 120

TURTLENECKS ..... 39

**U**

UNDERGARMENTS ..... 39

**V**

VENTED SIDE PANELS ..... 130

VESTS ..... 64

**W**

WATER BOTTLES ..... 89

WEARBARS ..... 120, 137

WEAR STRIPS ..... 116

WHEEL KITS ..... 121, 131

WINCH KIT ..... 133

WIND DEFLECTORS ..... 117

WINDSCREENS ..... 110-111, 125

WOMEN

    Outerwear .... 8-9, 11, 25, 30, 32-33, 36-37, 42-43

    Sportswear ..... 65-67, 75-77

    Boots ..... 60-61

    Layers ..... 39-41

**X**

**XF CROSS COUNTRY**

    Bags

        Handlebar ..... 100

    Bar Risers ..... 131

    Battery Chargers ..... 141

    Belts ..... 142

    Bumpers

        Front ..... 102, 125

        Rear ..... 103

    Covers ..... 94-95, 97

    Gas Cap ..... 113

    Goggle Holder ..... 100

    Hand Grips ..... 113

    Hand Guards ..... 112

    Fixed Steering Post ..... 131

    Heated Shield Outlet ..... 109

    Hitch Kit ..... 108

    Ice Scratchers ..... 130

    Mirrors ..... 117

    Mountain Handlebar ..... 131

    Muffs ..... 106

    Oil & Care ..... 143-145

    Rack, Rear ..... 114, 127

    Rail Cap Wheel Kit ..... 131

    Rear Wheel Kit ..... 121

    Shocks ..... 122-123

    Skid Plates ..... 116

    Skis ..... 115

    Snow Mesh ..... 116

    Snowflap ..... 117

    Stud Templates ..... 139

    Switch Guards ..... 130

    Tank Pads ..... 113

    Tow Hitch ..... 108

    Tracks ..... 134-135

    Track Rack System ..... 126

    Tunnel Flares ..... 117

    Tunnel Protector Kit ..... 139

**XF CROSS COUNTRY (cont.)**

    Vented Side Panel ..... 130

    Wear Strips ..... 116

    Wearbars ..... 137

    Wheel Kit ..... 121

    Wind Deflectors ..... 117

    Windshields ..... 110-111

**XF HIGH COUNTRY**

    Bags

        Handlebar ..... 100

        Tunnel ..... 99, 126

        Windshield ..... 98

    Bar Risers ..... 131

    Battery Chargers ..... 141

    Belts ..... 142

    Bumpers

        Front ..... 102, 125

        Rear ..... 103, 125

    Covers ..... 94-95, 97

    Gas Cap ..... 113

    Goggle Holder ..... 100

    Hand Grips ..... 113

    Hand Guards ..... 112

    Fixed Steering Post ..... 131

    Heated Shield Outlet ..... 109

    Hitch Kit ..... 108

    Ice Scratchers ..... 130

    Mirrors ..... 117

    Mountain Handlebar ..... 131

    Muffs ..... 106

    Oil & Care ..... 143-145

    Rack, Rear ..... 114, 127

    Rail Cap Wheel Kit ..... 131

    Rear Wheel Kit ..... 121

    Running Boards ..... 124

    Skid Plates ..... 116

    Skis ..... 115

    Snow Mesh ..... 116

    Speedrack Kit ..... 104

    Stud Templates ..... 139

    Switch Guards ..... 130

    Tank Pads ..... 113

    Tow Hitch ..... 108

    Tracks ..... 134-135

    Track Rack System ..... 126

    Tunnel Flares ..... 117

    Vented Side Panel ..... 130

    Wear Strips ..... 116

    Wearbars ..... 137

    Wheel Kit ..... 121

    Wind Deflectors ..... 117

    Windshields ..... 110-111

**Y**

**YOUTH**

    Arcticwear ..... 44-47

    Ridegear ..... 48-49

    Sportswear ..... 78-79

**Z**

**ZR**

    Bags

        Handlebar ..... 100

        Saddle ..... 99

        Tank ..... 101

        Tunnel ..... 98

        Windshield ..... 98

    Bar Risers ..... 131

    Battery Chargers ..... 141

    Belts ..... 142

    Bumpers

        Front ..... 102, 125

        Rear ..... 103

    Coolant Heater ..... 109

    Covers ..... 94-95, 97

    Gas Cap ..... 113

    Goggle Holder ..... 100

    Hand Grips ..... 113

    Hand Guards ..... 112

    Heated Shield Outlet ..... 109

    Hitch Kit ..... 108

    Mirrors ..... 117

    Muffs ..... 106

    Oil & Care ..... 143-145

    Rack, Rear ..... 114, 127

    Rear Wheel Kit ..... 121

    Seat

        2-Up Kit ..... 107

    Shocks ..... 122-123

    Skid Plates ..... 116

    Skis ..... 115

    Snow Mesh ..... 116

    Snowflap ..... 117

    Speedrack Kit ..... 104

    Stud Templates ..... 139

    Switch Guards ..... 130

    Tank Pads ..... 113

    Tow Hitch ..... 108

    Traction Kits ..... 138-139

    Tracks ..... 134-135

    Track Rack System ..... 126

    Tunnel Flares ..... 117

    Tunnel Protector Kit ..... 120

    Vented Side Panel ..... 130

    Wear Strips ..... 116

    Wearbars ..... 137

    Wheel Kit ..... 121

    Wind Deflectors ..... 117

    Windshields ..... 110-111



Call or visit your local Arctic Cat dealer for more information. For a dealer near you, visit [arcticcat.com](http://arcticcat.com).



© 2018 Arctic Cat Division of Textron Inc. All rights reserved  
6801 Glenn Carlson Dr. St. Cloud, MN 56301

5294-005 US 